

HYPOSPHÈRE 2

LE RÉSEAU DES CIRCULATIONS
ENTRE LES CARNETS D'HYPOTHÈSES,
UNE DÉCENNIE PLUS TARD



Pierre Mercklé

*Journée d'études « 10 ans d'Hypotheses »
Paris, Ecole nationale des Chartes, mardi 8 janvier 2019*

HYPOTHESOPHÈRE

- Source : <http://socioargu.hypotheses.org/1921>.

The screenshot shows the Hypothesosphere website interface. At the top, there is a header with the title "Socio-informatique et argumentation" and a subtitle "sociologie argumentative des controverses, concepts et méthodes socio-informatiques". A search bar is located on the right side of the header. Below the header, there is a navigation menu with "Accueil", "Rédaction", and "À propos". The main content area features an article titled "ESSAI DE CARTOGRAPHIE DES CARNETS DE RECHERCHE" by JOSQUIN DEBAZ, dated 8 décembre 2010. The article discusses the use of cartography to represent the relationships between research notes on the Hypothesosphere platform. On the right side, there is a sidebar with various sections: "hypotheses.org" with a description of the platform's research focus, "GSPR" with a list of groups, "LIENS" with a list of related resources, "CATÉGORIES" with a list of categories and their counts, and "PORTÉE DE LA CONCERTATION" with a list of related projects.

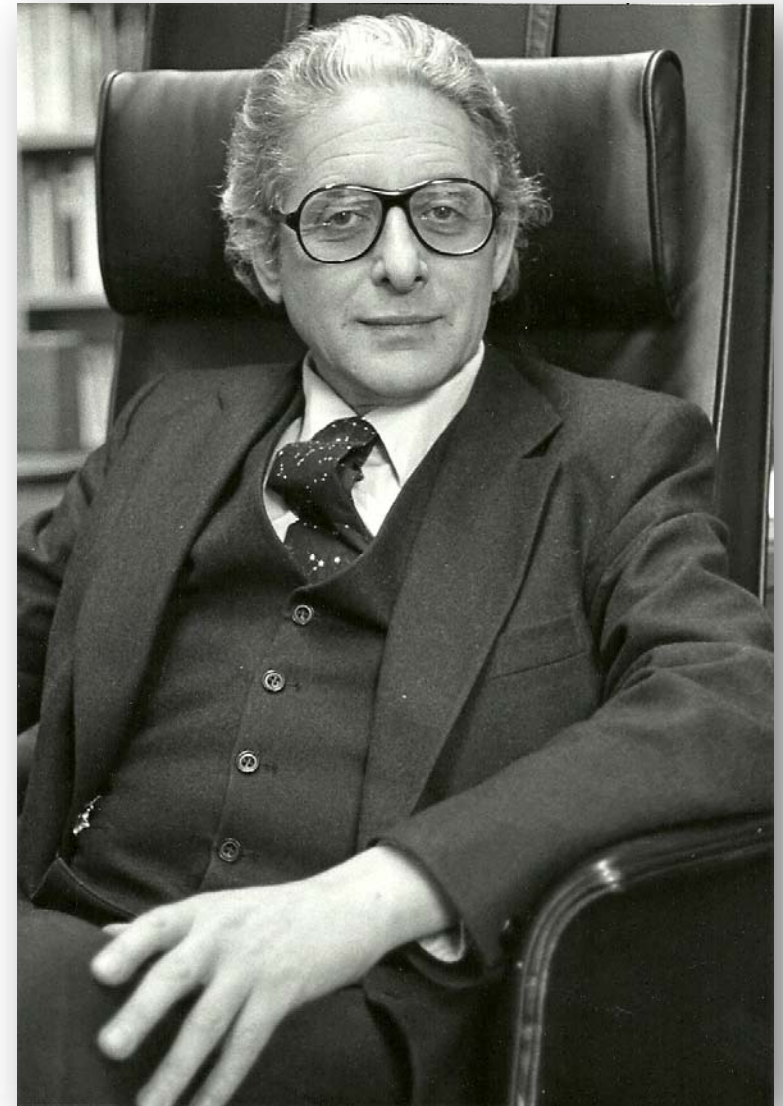
NETWORKS OF SCIENTIFIC PAPERS

“This article is an attempt to describe in the broadest outline the nature of the total world network of scientific papers.”

- Derek John de Solla Price, 1965, “Networks of scientific papers”, *Science*, 149(3683), pp. 510-515, <http://www.garfield.library.upenn.edu/papers/pricenetworks1965.pdf>.

Une référence pour faire le point sur la question :

- White H. D., 2011, « Scientific and Scholarly Networks », in Scott J., Carrington P. J. (dir.), *The SAGE Handbook of Social Network Analysis*, Sage, p. 271-285.



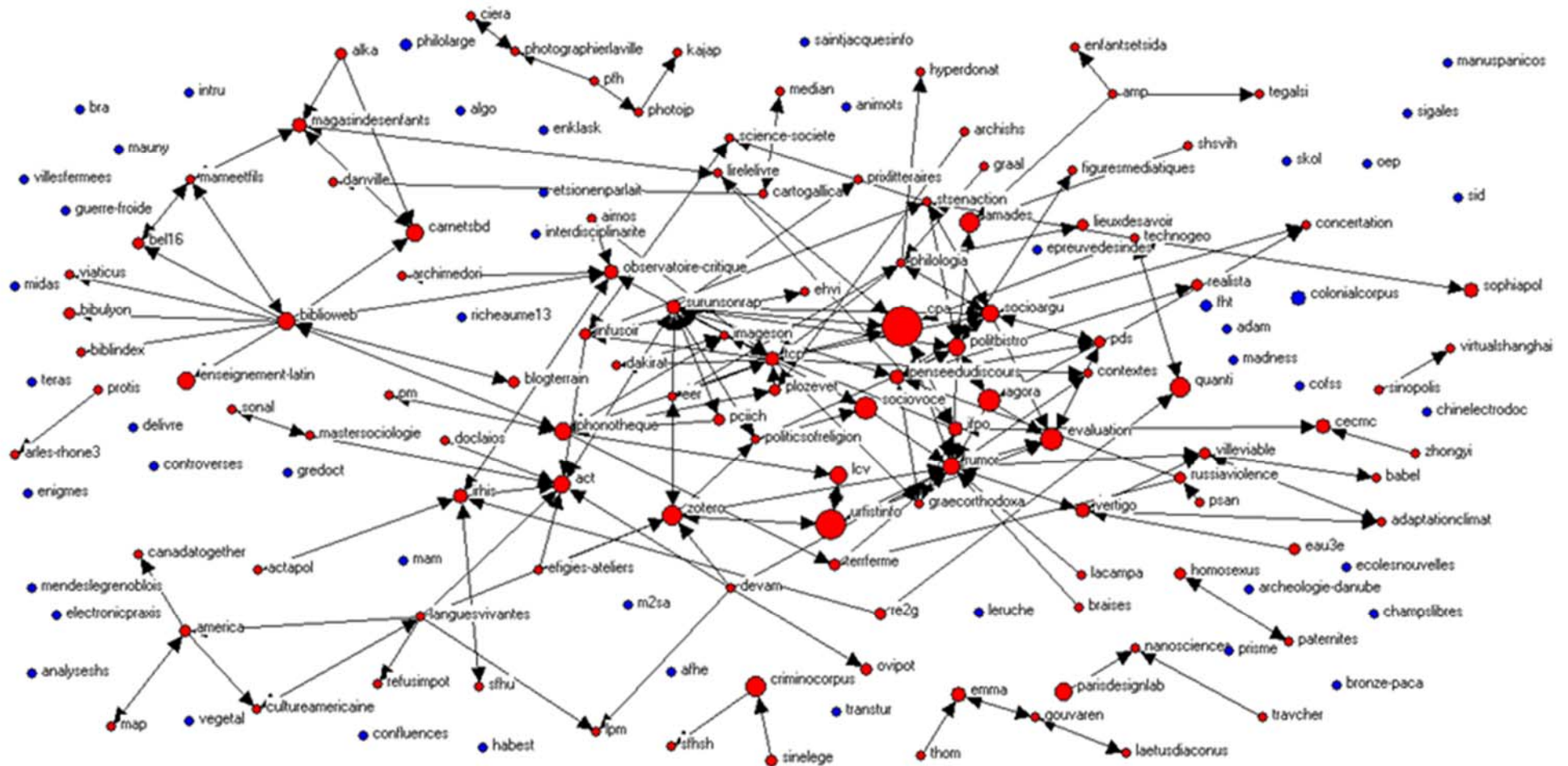
LES « LOGS » DU SERVEUR D'HYPOTHESES

```
9.241 - - [01/Nov/2018:01:54:27 +0100] "POST http://euruscrm.hypotheses.org/wp-cron.php?doing_wp_cron=1541033948.1242890357971191406250 HTTP/1.1" 200 20 "https://euruscrm.hypotheses.org/wp-cron.php?doing_wp_cron=1541033948.1242890357971191406250"
.127 - - [01/Nov/2018:01:54:27 +0100] "GET http://giip.hypotheses.org/robots.txt HTTP/1.1" 200 24 "-" "Mozilla/5.0 (compatible; YandexBot/3.0; +http://yandex.com/bots)"
.9 - - [01/Nov/2018:01:54:27 +0100] "GET http://nomundodosemus.hypotheses.org/tag/thesaurus-de-instrumentos-cientificos HTTP/1.1" 200 29754 "-" "Mozilla/5.0 (Linux; Android 6.0.1; Nexus 5X Build/MMB29P)"
.156 - - [01/Nov/2018:01:54:28 +0100] "GET http://giip.hypotheses.org/1/feed/rdp HTTP/1.1" 200 6715 "-" "Mozilla/5.0 (compatible; YandexBot/3.0; +http://yandex.com/bots)"
.79 - - [01/Nov/2018:01:54:28 +0100] "GET http://cqfa.hypotheses.org/tag/histoire HTTP/1.1" 200 20210 "-" "Mozilla/5.0 (compatible; bingbot/2.0; +http://www.bing.com/bingbot.htm)"
00.106 - - [01/Nov/2018:01:54:28 +0100] "GET http://russeurope.hypotheses.org/522 HTTP/1.1" 200 24710 "-" "Sogou web spider/4.0 (+http://www.sogou.com/docs/help/webmasters.htm#07)"
.196 - - [01/Nov/2018:01:54:28 +0100] "GET http://socioeco.hypotheses.org/author/samuelpinaud/feed HTTP/1.1" 200 79730 "https://www.google.com/" "Mozilla/5.0 (Windows; U; Win 9x 4.90; SG; rv:1.9.2.4) Gecko/2010110201"
2.117 - - [01/Nov/2018:01:54:28 +0100] "GET http://indecise.hypotheses.org/feed HTTP/1.1" 304 0 "http://indecise.hypotheses.org/feed" "Superfeedr bot/2.0 http://superfeedr.com - Make your feeds realtime"
8.131 - - [01/Nov/2018:01:54:28 +0100] "GET http://esca.hypotheses.org/sitemap-pt-post-2013-04.xml HTTP/1.1" 200 869 "-" "Mozilla/5.0 (compatible; SemrushBot/2~bl; +http://www.semrush.com/bot.html)"
5.113 - - [01/Nov/2018:01:54:28 +0100] "GET http://ptvirgule.hypotheses.org/category/etat/feed HTTP/1.1" 304 0 "https://www.google.com/" "Mozilla/5.0 (Windows; U; Windows NT 6.1; rv:2.2) Gecko/20110201"
3.116 - - [01/Nov/2018:01:54:28 +0100] "GET http://cinemadoc.hypotheses.org/ HTTP/1.1" 200 31960 "http://celluloid.hypotheses.org/" "Mozilla/5.0 (Windows NT 6.2; WOW64; Trident/7.0; rv:11.0) like Gecko"
0.252 - - [01/Nov/2018:01:54:28 +0100] "GET http://chispa.hypotheses.org/feed HTTP/1.1" 304 0 "http://chispa.hypotheses.org/" "Mozilla/5.0 (compatible; inoreader.com; 2 subscribers)"
8.106 - - [01/Nov/2018:01:54:28 +0100] "GET http://ihpm.hypotheses.org/robots.txt HTTP/1.1" 200 24 "-" "PiplBot (+http://www.pipl.com/bot/)"
2.155 - - [01/Nov/2018:01:54:28 +0100] "GET http://aggiornamento.hypotheses.org/feed HTTP/1.1" 304 0 "http://aggiornamento.hypotheses.org/feed" "Superfeedr bot/2.0 http://superfeedr.com - Make your feed:"
0.68 - - [01/Nov/2018:01:54:28 +0100] "GET http://aggiornamento.hypotheses.org/wp-login.php HTTP/1.1" 200 4142 "-" "Mozilla/5.0 (Windows NT 6.1; WOW64; rv:40.0) Gecko/20100101 Firefox/40.1"
4 - - [01/Nov/2018:01:54:28 +0100] "GET http://enseignement-latin.hypotheses.org/10308/feed/rdp HTTP/1.1" 200 12255 "-" "Mozilla/5.0 (compatible; YandexBot/3.0; +http://yandex.com/bots)"
3.102 - - [01/Nov/2018:01:54:28 +0100] "GET http://hepev.hypotheses.org/feed HTTP/1.1" 304 0 "http://hepev.hypotheses.org/feed" "Superfeedr bot/2.0 http://superfeedr.com - Make your feeds realtime: get:"
8.141 - - [01/Nov/2018:01:54:28 +0100] "GET http://churchlang.hypotheses.org/the-orthodox-church-and-russian-society-in-transition-panel-on-the-ix-international-conference-of-the-study-group-on-eighteen:"
.162 - - [01/Nov/2018:01:54:28 +0100] "GET http://archivevkl.hypotheses.org/sitemap-pt-post-2015-09.xml HTTP/1.1" 200 36987 "-" "Mozilla/5.0 (compatible; bingbot/2.0; +http://www.bing.com/bingbot.htm)"
8.149 - - [01/Nov/2018:01:54:28 +0100] "GET http://dph.hypotheses.org/sitemap-pt-post-2014-10.xml HTTP/1.1" 200 863 "-" "Mozilla/5.0 (compatible; SemrushBot/2~bl; +http://www.semrush.com/bot.html)"
98.228 - - [01/Nov/2018:01:54:28 +0100] "GET http://openjlem.hypotheses.org/feed HTTP/1.1" 200 19081 "-" "Java/1.8.0_121"
8.131 - - [01/Nov/2018:01:54:28 +0100] "GET http://cereg.hypotheses.org/sitemap-pt-post-2018-09.xml HTTP/1.1" 200 869 "-" "Mozilla/5.0 (compatible; SemrushBot/2~bl; +http://www.semrush.com/bot.html)"
0.136 - - [01/Nov/2018:01:54:28 +0100] "GET http://chiasm.hypotheses.org/wp-login.php HTTP/1.1" 200 1864 "https://www.google.com/url?81288f757951550bd65f0fc145b8fefe" "Mozilla/5.0 (Windows NT 6.0; WOW64;"
3.116 - - [01/Nov/2018:01:54:28 +0100] "GET http://hypotheses.org/ HTTP/1.1" 200 20030 "http://celluloid.hypotheses.org/" "Mozilla/5.0 (Windows NT 6.2; WOW64; Trident/7.0; rv:11.0) like Gecko"
3.116 - - [01/Nov/2018:01:54:29 +0100] "GET http://hypotheses.org/ HTTP/1.1" 200 20030 "http://celluloid.hypotheses.org/" "Mozilla/5.0 (Windows NT 6.2; WOW64; Trident/7.0; rv:11.0) like Gecko"
8.138 - - [01/Nov/2018:01:54:29 +0100] "GET http://cereg.hypotheses.org/sitemap-pt-post-2018-03.xml HTTP/1.1" 200 869 "-" "Mozilla/5.0 (compatible; SemrushBot/2~bl; +http://www.semrush.com/bot.html)"
```

Pour chaque ligne de requête, le journal des logs enregistre :

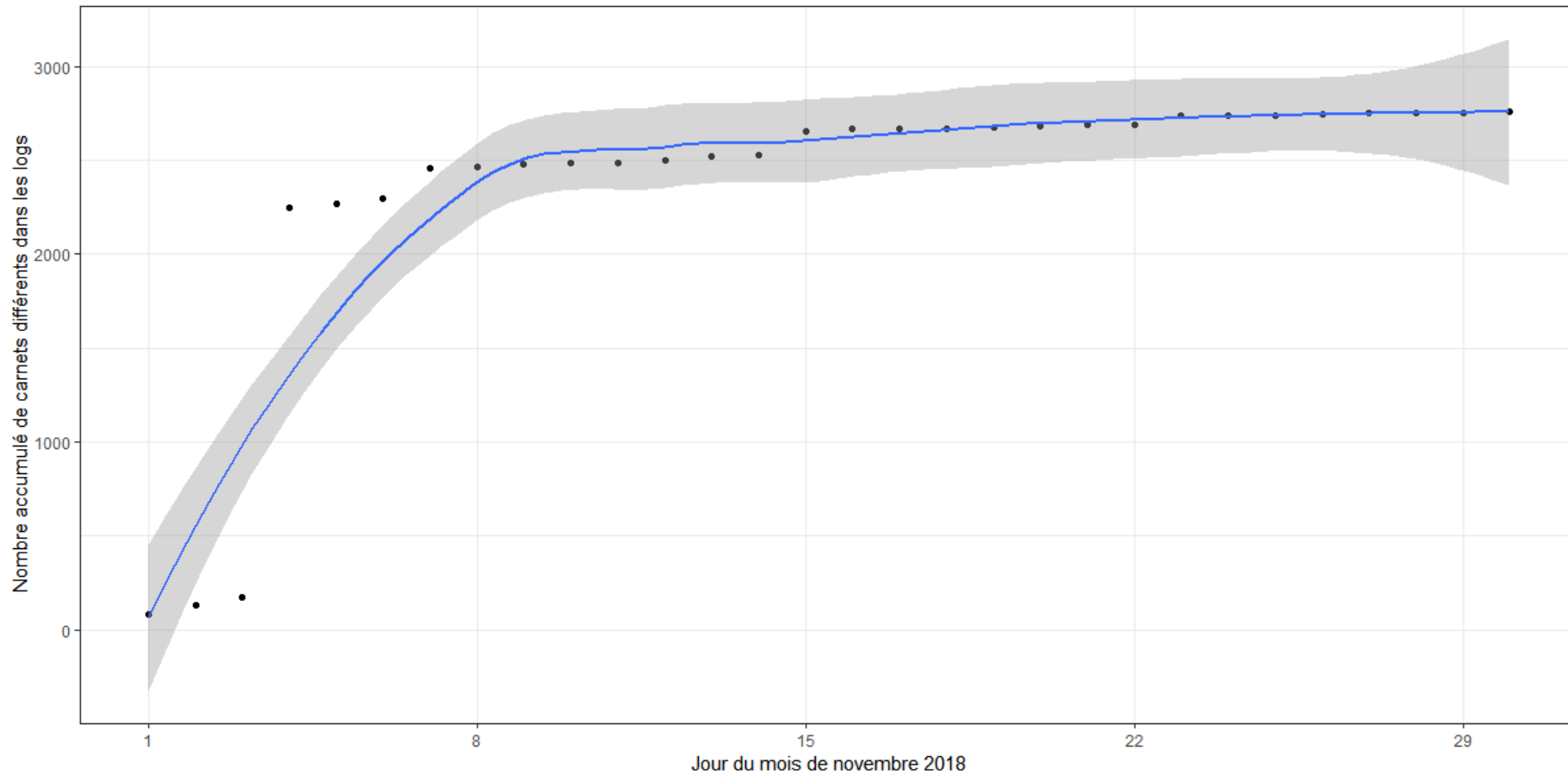
- Adresse IP du client (hôte distant) qui a effectué la requête sur le serveur.
- Date, heure et fuseau horaire de la réception de la requête (au format strftime %d/%b/%Y:%H:%M:%S %z).
- Ligne de requête du client: méthode, ressource requise et protocole HTTP.
- Code de statut HTTP renvoyé au client : 2xx (réponse réussie), 3xx (redirection), 4xx (erreur client), 5xx (erreur serveur).
- Taille de la ressource renvoyée au client, en octets.
- Entête « Referer » de la requête HTTP : indique le site depuis lequel le client prétend avoir lancé sa requête (une page qui contient un lien vers la ressource requise ou qui contient celle-ci).
- Entête « User-Agent » de la requête HTTP : donne l'information d'identification que le navigateur du client envoie à propos de lui-même.

L'HYPOTHESOPHÈRE (2011)



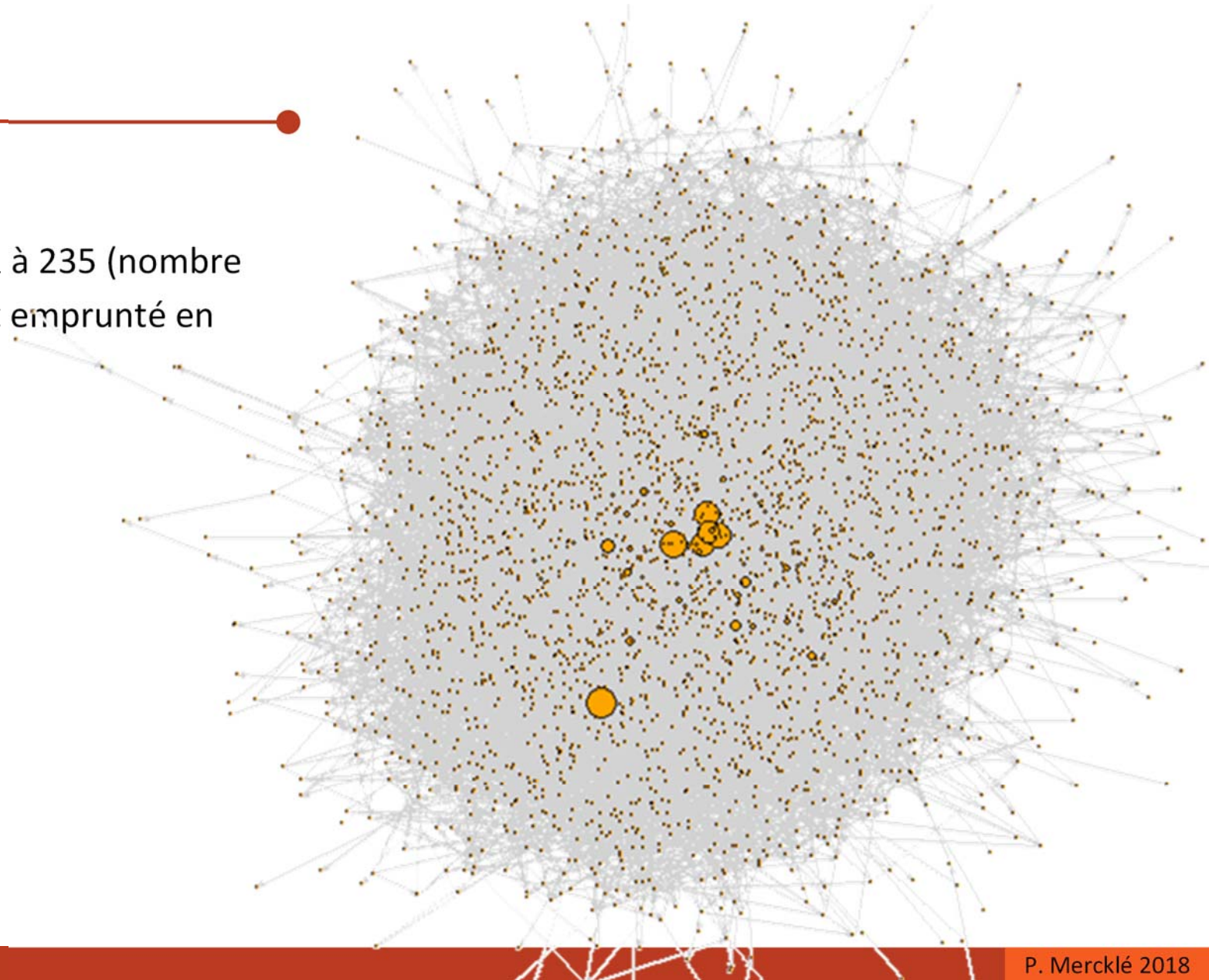
Source : <http://socioargu.hypotheses.org/1921>.

NOMBRE DE CARNETS DIFFÉRENTS ET DURÉE D'OBSERVATION



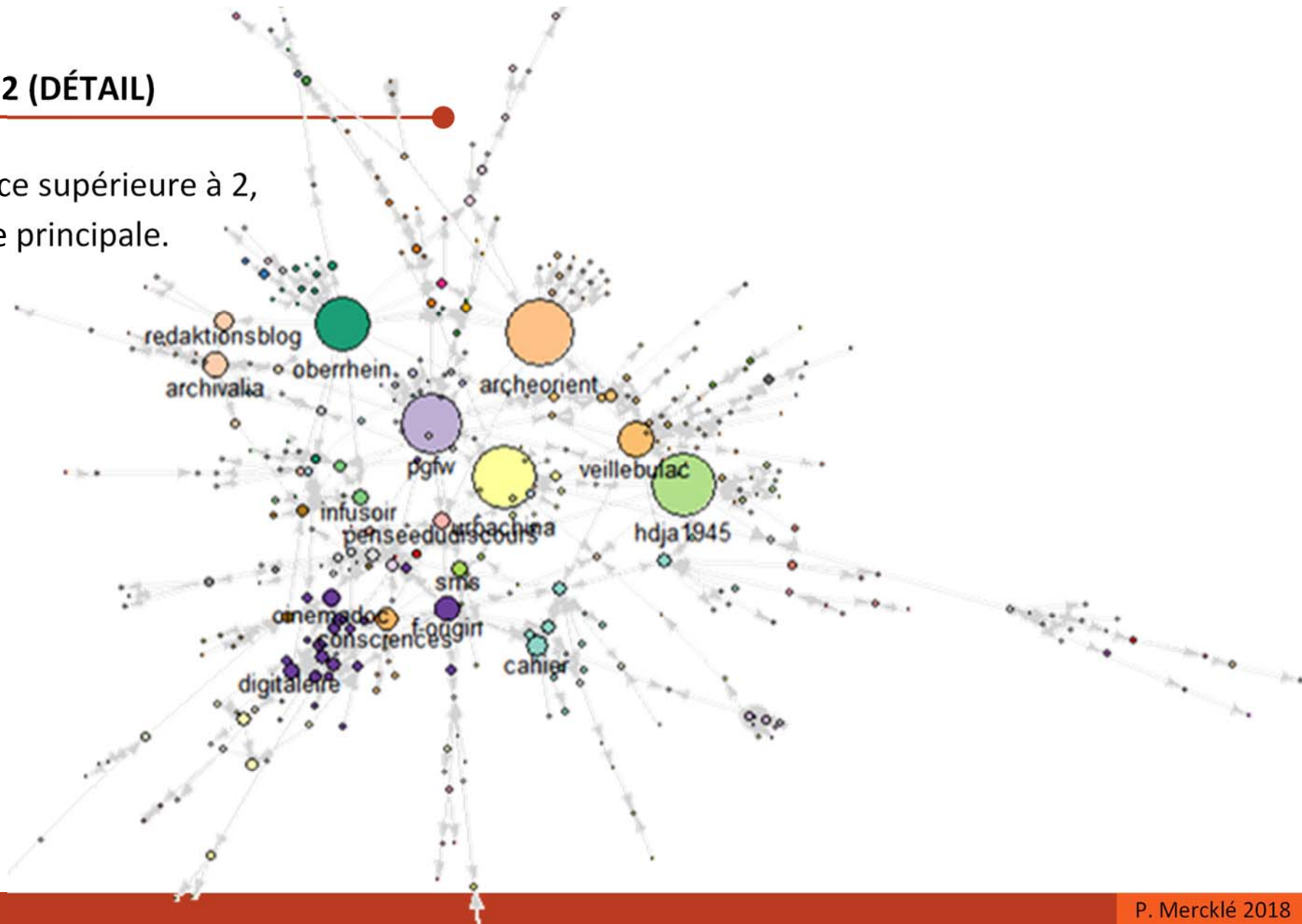
HYPOSPHÈRE 2 (2018)

- 2 994 sommets.
- 11 984 liens valués de 1 à 235 (nombre de fois où le chemin est emprunté en novembre 2018).
- Densité : 0,1%

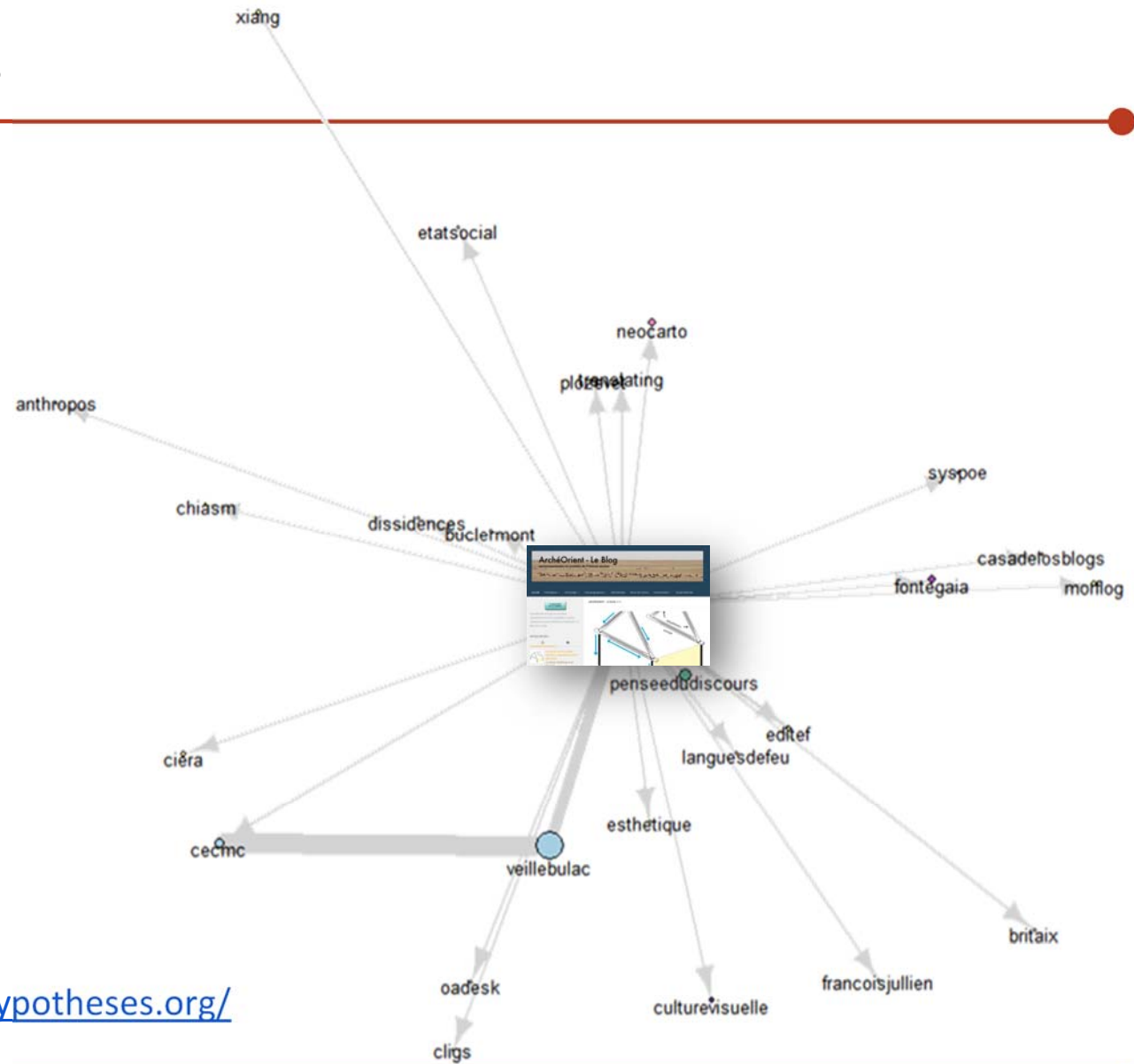


HYPOSPHÈRE 2 (DÉTAIL)

- Liens de force supérieure à 2, composante principale.



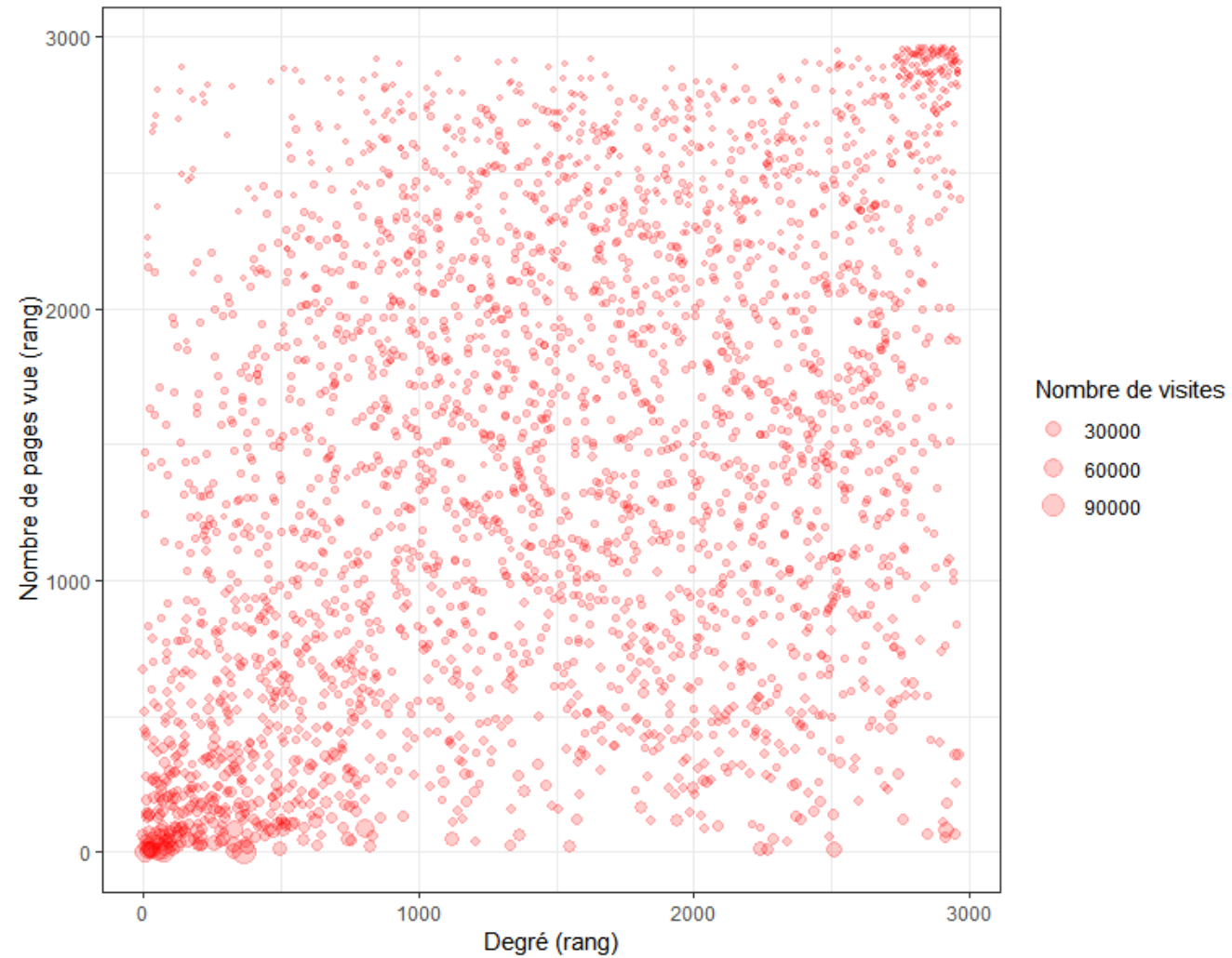
LA ZONE DE ARCHEORIENT



- URL : <https://archeorient.hypotheses.org/>

DEGRÉ ET NOMBRE DE PAGES VUES

- Coefficient de corrélation
 $\rho = 0,38$

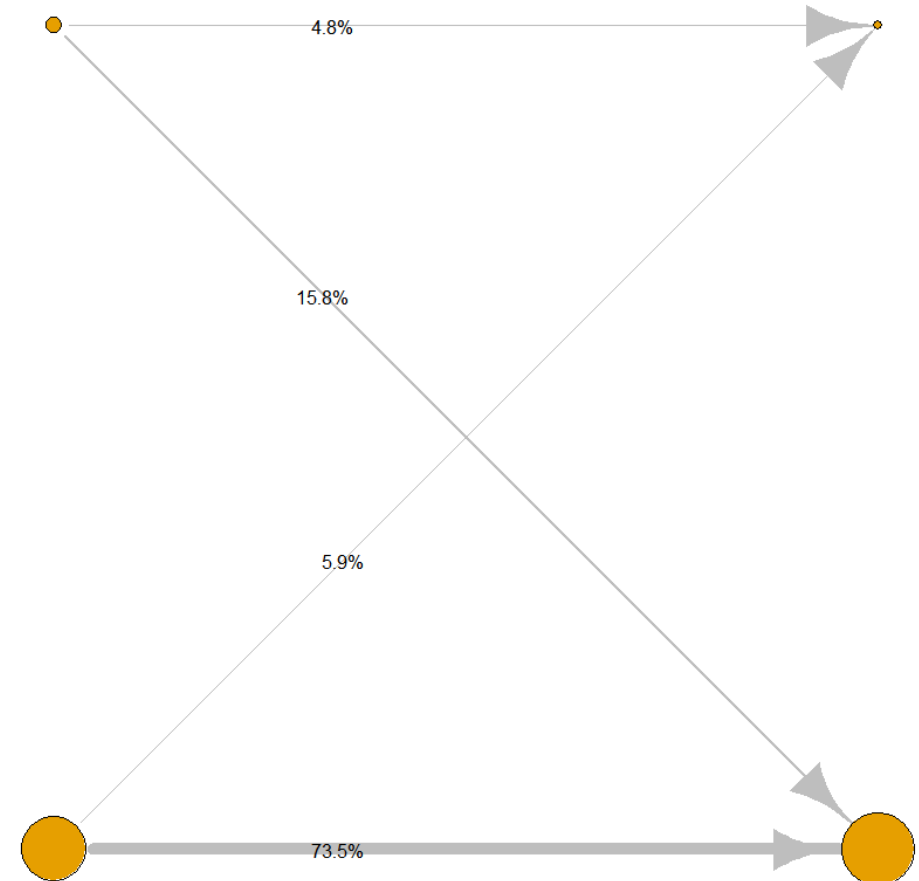


PAGES D'ACCUEIL ET BILLETS

- Source : Hypotheses.org, novembre 2018.
- Champ : Circulations entre carnets d'Hypotheses (N = 18 743).

source = page d'accueil

cible = page d'accueil

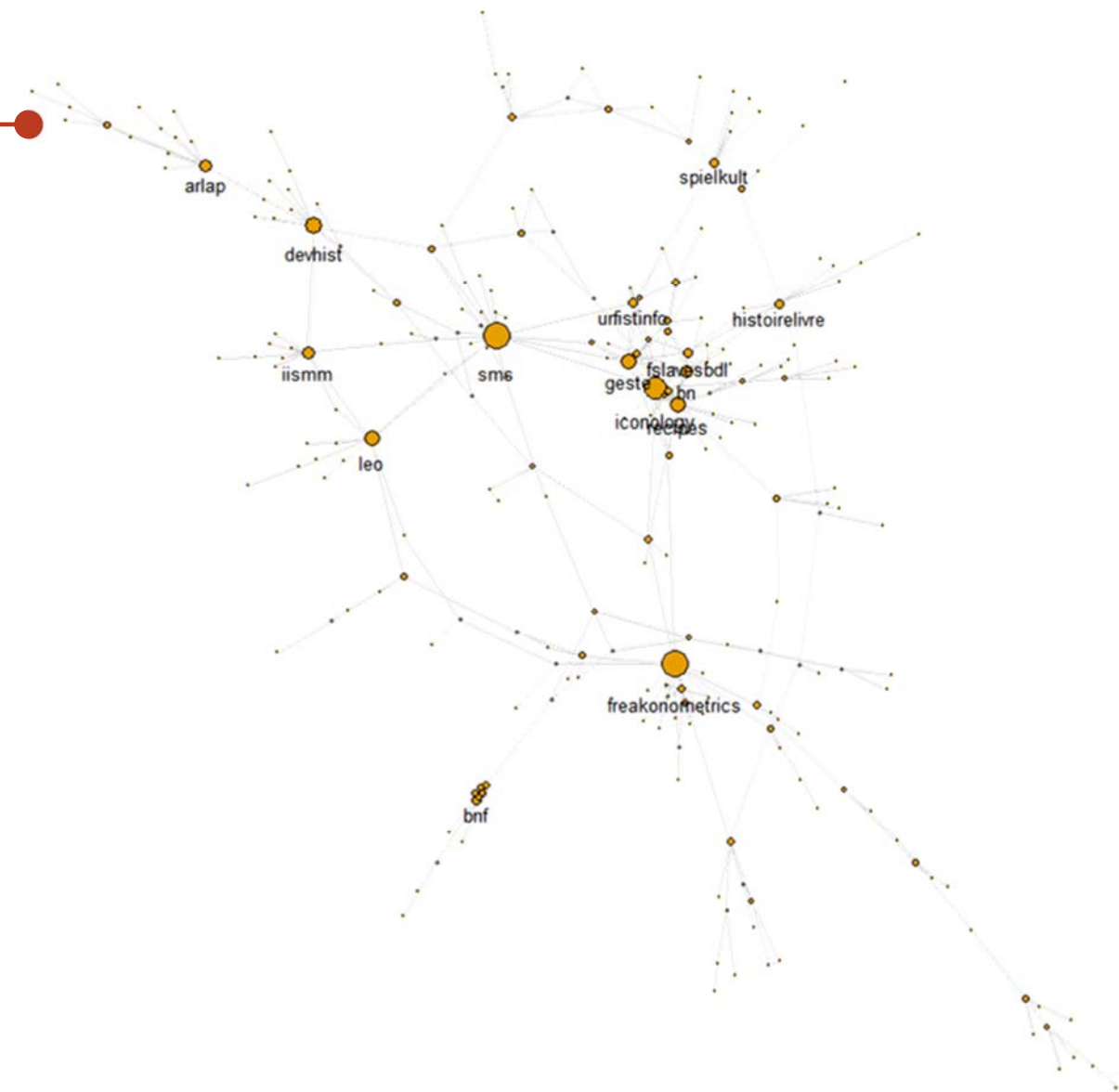


source = billet

cible = billet

L'HYPOSPHÈRE DES « CO-VISITES »

- Source : Hypotheses.org, novembre 2018.
- Champ : logs de pages vues à partir des mêmes adresses IP (N = 200 000 premiers sur 20 millions de logs).
- Liens de force supérieure à 1, composante principale.



LA ZONE DES CO-VISITES DE « MONDES SOCIAUX » (SMS)

- URL : <https://sms.hypotheses.org>



RESSOURCES

Outils et services utilisés

R (<https://www.r-project.org>) et packages :

- rvest : webscraping des statistiques OpenEdition sur la page
- igraph : analyse de réseaux

Références bibliographiques citées

- Debaz Josquin, 2010, “Hypothesosphère”, *Socio-informatique et argumentation*, <http://socioargu.hypotheses.org/1921>.
- Mercklé Pierre, 2011, “L'Hyposphère”, *pierremerckle.fr*, <http://pierremerckle.fr/2011/06/lhyposphere/>.
- Price Derek John De Solla, 1965, “Networks of Scientific Papers”, *Science*, 149(3683), p. 510-515, <http://www.garfield.library.upenn.edu/papers/pricenetworks1965.pdf>.
- White Howard D., 2011, “Scientific and Scholarly Networks”, in Scott John and Carrington Peter J. (eds.), *The SAGE Handbook of Social Network Analysis*, Sage, series, p. 271-285.

MERCI DE VOTRE ATTENTION !



Pour me contacter :

pierre.merckle@univ-grenoble-alpes.fr