



**HAL**  
open science

# Electricity supply reliability and households decision to connect to the grid

Arnaud Millien

► **To cite this version:**

Arnaud Millien. Electricity supply reliability and households decision to connect to the grid. 2017. halshs-01551097

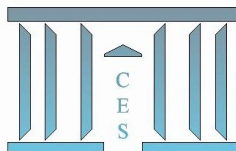
**HAL Id: halshs-01551097**

**<https://shs.hal.science/halshs-01551097>**

Submitted on 30 Jun 2017

**HAL** is a multi-disciplinary open access archive for the deposit and dissemination of scientific research documents, whether they are published or not. The documents may come from teaching and research institutions in France or abroad, or from public or private research centers.

L'archive ouverte pluridisciplinaire **HAL**, est destinée au dépôt et à la diffusion de documents scientifiques de niveau recherche, publiés ou non, émanant des établissements d'enseignement et de recherche français ou étrangers, des laboratoires publics ou privés.



**Electricity supply reliability and households decision  
to connect to the grid**

Arnaud MILLIEN

**2017.31**



# Electricity supply reliability and households decision to connect to the grid

Arnaud Millien

10 mai 2017

## Abstract

The 7th Sustainable Development Goal aims to "*ensure access to affordable, reliable, sustainable and modern energy for all*". Because the cost to increase electrical capacity in Africa alone has been estimated at \$800bn, this article investigates the extent to which electricity reliability could contribute to a reduction in the marginal cost of grid extension by attracting more customers. Using lightning as an instrument for outages severity, the article evaluates the assumption that less uncertainty about electricity availability would lead to a larger number of connected households.

The article finds that a one percentage point increase in electricity reliability would yield a 0.67 percentage point increase in connections. Therefore, delivering fully reliable electrical power would allow an electricity company to achieve its targeted growth of customer base 15 months earlier than planned.

The effect of reliability is highest for middle-rich households, which are the most reluctant to subscribe in the presence of total, severe or partial outages. A one-percentage-point upgrade in reliability increase the likelihood that these households will be connected by 1.28 percentage points.

This article also finds that households are more sensitive to outages in areas where outages are less frequent. In addition, the impact of reliability on households decision to connect could be at least 5% greater than the effect of poverty; if the frequency of outages is too high, the wealth or poverty effect might vanish and households would respond only to the excessively low reliability.

These results confirm the uncertainty assumption, that is, regular and severe outages yield an uninsurable context that deters households from subscribing to the electric service.

*Keywords* : *electrification, reliability, outages, Kenya, instrumental variable*

JEL : Q4, Q01, O18, O55, C26, C52

## Acknowledgments

*The author thanks Jean-Claude Berthelemy for his compelling improvements and on-going discussions; Rémi Bazilier, Mathilde Maurel, Mouez Fodha, Fatou Cisse and Max Brüning for their relevant insights and comments; Sandra Poncet and the teaching team of Maison des Sciences Economiques for their professional research advice; Afrobarometer for providing the data; Victor Béguerie for his guidance on the poverty index; Olivier Santoni for supplementing the geographical data; Chris Davis for providing support in the use of Enipedia; and Justice Mensah for his support*

*and openness to innovation. Any errors that remain are those of the author.*

## Introduction

Achieving the 7th Sustainable Development Goal will be expensive : the cost to increase electricity supply in Africa could amount to \$800bn. Moreover, severe and regular shortages might deter households from buying a subscription to the electricity provider, which in turn will increase the marginal cost of grid extension. Consequently investor risk might increase, which could jeopardize future investment in new infrastructures. The low-quality context of supplied electricity could thus increase the global cost of electrification far higher than the cost of building new plants and lines.

Electricity quality can impact the cost of grid extension in several ways. First, the expected benefits of electrification would vanish if low-quality service yielded only a small increase in connections. In addition, reliability itself appears to be a condition for sustainable development of the electrical grid ; as shown by [Lee et al., 2014] in Kenya, a lack of connections lead to a tenfold increase in the marginal cost of installing new transformers. Regular outages could thus dramatically reduce investors' expected returns, making them reluctant to fund any new electricity project, whereas sub-Saharan countries' financial resources and access to external funding are scarce. A reduced ability to renew infrastructures and capacity might then cause those countries to enter a vicious cycle : aging infrastructure increases the frequency of outages, which inhibits subscriptions to the electric service, and thereby reduces the resources available to fund their replacement.

Evaluating the external benefits of reliability is crucial, because regular severe outages create uncertainty, which may change households consumption or firms production choices, leading to costly long-run inefficiencies. Addressing this question is urgent because the economic cost of outages increases exponentially with their duration and severity [Kaseke, 2011].

In this context, policy makers and investors must determine how to extend electrification in a sustainable manner by providing service quality. They cannot focus solely on the expected net present value of projects, which long-run achievement could be itself affected if a lack of reliability would let gain a fewer-than-expected number of customers. Achieving this objective lead to a trade-off between extensive and intensive investments, the first of which fund the building of new utilities and lines and the second support improvements to reliability. This article proposes to identify the customer segment that should be targeted first by an electric company, in order to maximize the return to quality.

[Andersen and Dalgaard, 2013] have been the first to demonstrate the detrimental impact of electrical outages on growth in sub-Saharan Africa, finding that an increase of 2.3 outages per month reduces annual growth by 1.5 points. Their contribution is all the more important because it relies on an external instrument [Deaton, 2010] to solve the main identification issue faced by the literature on electrification, namely, the endogenous placement of the grid [Lipscomb et al., 2012], [Van de Walle et al., 2013]. Lightning is not only external to grid extension or management but also strongly correlated with outages, although it remains exogenous to the outcome. Hence, lightning captures the causal impact of outages on growth.

This article uses individual data on Kenyan households, applying the robust identification

methodology of [Andersen and Dalgaard, 2013] to evaluate the impact of reliability on the likelihood that households are connected to the electrical grid. Relying on the consistency of the same instrumentation, the article checks the prediction of the macro-level model with a finer level of observations. Using micro-level data is relevant because [Chakravorty et al., 2014] showed that the macro result can be verified by focusing on the households' revenue channel. In addition, the micro-level approach eliminates certain possible confounding factors that must be accounted for at the macro level, such whether the country is resource rich or located on the coast.

Another contribution of this article is that it focuses on one of the channels through which electrical shortages could impact annual growth, i.e., changes in households behavior due to the uncertainty context. Given that most -if not all- of the literature is based on an underlying assumption of exogenous and homogeneous quality of electricity supply, disentangling this channel will permit an assessment of whether reliability is a condition for the sustainable development of electricity.

I also extend the referral specification. Because [Lee et al., 2014] found that the wealth effect outweighs the impact of distance to transformers, I introduce a poverty index as a control. Additionally, I exploit a peculiarity of Kenya -namely, that 75% of the generation capacity is constrained by natural geographical features (i.e., rivers, volcanos and coastal access)- by extending the set of instruments to include distance to the closest generator, as suggested by [Van de Walle et al., 2013].

Finally, this article incorporates the notion of "under-grid" households, extending the work of [Lee et al., 2014] at the smallest granularity level : whereas they worked with compound data on households, I exploit the Afrobarometer survey that collects individual information on all household members.

Section I outlines the questions addressed by the literature, and Section II describes the electricity context in Kenya. Section III presents the data, and Section IV explains the identification strategy. Empirical results and robustness checks are provided in sections V and VI. Section VII concludes with a "what-if" scenario.

## 1 Literature review : known issues and opened questions

### 1.1 Evaluation of the technical-economic costs of electricity

One strand of the literature evaluates the technical-economic costs of electricity production, considering either its output (cost of kWh) or its disruption (cost of outages). The levelized cost of electricity (LCOE) assesses *ex ante* the economic feasibility of projects, whereas the value of lost load (VoLL) and contingent valuation methods (CVM) evaluate the reliability's benefit, by measuring how much has been or could be lost due to outages.

The LCOE expresses the lifetime unit cost of kWh based on expected investment and future running expenses. Because electricity projects usually require large capital expenses ("capex"), it is crucial for investors to get an *ex ante* synthetic measurement, in which lower operational expenses ("opex") might ease the recovery delay. This approach involves the producer of electricity in cost structure management before the project is brought to market because, unlike a net present value, the LCOE only takes into account the expected expenses, both upfront and long-term. [Nordman, 2014] uses an LCOE measurement to conduct a cost/benefit analysis of wind power station deployment in the tea sector in Kenya. Comparing distributed generation utilities with grid extension in India, [Harish et al., 2014] couple the LCOE with the loss of consumer surplus and find that the break-even point for an *off-grid* solution is at least 17 km from the grid, or even 6 km if fuel and oil subsidies in the grid are discounted.

However, the LCOE only provides a technical-economic measurement of the main expected output (i.e., the cost of kWh) based on the project's design and management. In addition, it focuses on internal parameters that are *ex ante* valuated, and thus does not allow an assessment

of the external benefits after the project has been implemented, thereby precluding any feedback that could sustain investors long-run knowledge and interests. Notably, the LCOE does explain why or how the occurrence of outages could modify firms' or households' economic behavior.

The cost of reliability is defined by the VoLL as the average cost of unsupplied electricity in monetary unit per electricity unit (kWh) [Praktiknjo et al., 2011]. Outages are evaluated as the economic loss of surplus that they trigger, not as damages to devices or the production deficit. The VoLL has been estimated with Monte Carlo simulations in advanced countries such as Austria [Reichl et al., 2013]; in German households [Praktiknjo et al., 2011]; and after the explosion of a power station in Cyprus [Zachariadis and Poulikkas, 2012].

The VoLL appears to be better suited for advanced countries because its starting point relies on an assumption of full reliability : within a perfect electricity market, the cost of outages is seen as a divergence from the equilibrium. In contrast, in developing countries, the reliability context may be affected by a number of upstream factors, such as a low investment attractiveness ; limited access to funding which limits the ability for maintenance and replacement ; a poor governance of electricity i.e. insufficient regulation and management of balancing ; the poverty constraint on existing grids, which can trigger theft, pilfering and vandalism of lines or meters [Shah, 2009], thereby exacerbating the inefficiency of transport due to on-line losses [Khandker et al., 2014], [Berthélemy, 2016].

The VoLL also fails to take into account how a context of persistent outages might transform consumers' preferences into constrained choices because it assumes that the demand for electricity is exogenous and inelastic, whereas context can actually modify *per se* the demand curve for electricity.

Contingent methods have been used extensively, as noted by [Praktiknjo et al., 2011] in their meta-analysis of 16 studies. Contingent methods rely primarily on the firm's cost management framework, integrating the direct and indirect costs triggered by outages in an attempt to obtain the complete cost of an electricity shortage [Pasha et al., 1989]. [Diboma and Tamo Tatietsse, 2013] have classified these methods into three segments. The CVM relies on a survey that assesses consumers' willingness-to-pay (WTP) to avoid outages, and their willingness-to-accept (WTA) outages. This method has been used by [Kjolle et al., 2008] to evaluate the cost of outages in Norway. With the contingent ranking method (CRM), consumers are asked to rank outage scenarios. The CRM has been used by [Willis and Garrod, 1997] for a study in the UK. The direct worth (DW) method asks consumers to evaluate their losses given a set of predefined outages scenarios [Küfeoğlu and Lehtonen, 2015]. Using this type of survey and invoice data, [Diboma and Tamo Tatietsse, 2013] have evaluated the complete cost of power interruptions for firms in Cameroon.

However, the alleged impact relies on households' declarations and thus suffer from two main confounders. First, the survey's participants self-evaluate the cost of outages and could thus yield a Hawthorne effect : they might exaggerate the reported information, as they hope any future quality enhancement resulting from the researcher's interest. In addition, none of those cost studies uses any econometric methodology, and some of them do not even use any observational data. Therefore, they provide no evidence of the causal link between electrical reliability and development.

## 1.2 How the literature evaluates the impact of outages on firms' investment decision

A second well-developed strand of the literature evaluates the impact of outages on firms behavior, bringing a comprehensive framework of the agents' response to the uncertainty context by self-producing electricity. However, these studies do not explain how a greater reliability could sustain firms production preferences for other goods and services that might support the economic development. Conversely, the level of investment or product variety might be affected by the

outages context. In addition, this framework does not apply to households.

Scientific monographs have provided clues about the damaging inefficiencies caused by constrained production choices, whereby persistent outages might ultimately impair the expected benefits of electrification. In Kenya, [Kirubi et al., 2009] observed that handicraft workers constantly switch between manual and electrical tools due to regular outages. In India, [Smith and Urpelainen, 2016] also observed an increase in diesel irrigation pumps after the electrification of villages, despite the fact that those devices are costlier and less efficient than electrical pumps. These short-run constrained choices might lead to long-run inefficiencies; for example, after an eightfold increase in the price of fuel, the poorest farmer in Orissa abandoned high value-added crops for low-return rain-fed farming in open fields [Shah, 2007]. Although eastern India is one of the wealthiest areas in the world in terms of groundwater resources, farmers no longer had the means to exploit it and thus, also lost centennial socio-economic know-how.

[Alby et al., 2010] established a theoretical framework that describes the conditions in which a firm would opt to invest in self-generation to cope with the uncertainty context. It relates the probability of acquiring a generator with the number of outages and adjusts the firms' utility for the cost of self-generation.

Recent econometric works have demonstrated the impact of outages on firms decision to self-generate [Allcott et al., 2014] and have considered the combined impact of outages and self-generation on productivity in sub-Saharan Africa [Mensah, 2016]. Interestingly, the latter study uses the same instrument as [Allcott et al., 2014] for outages (i.e., the availability of water resources), as well as the parsimonious specification introduced by [Andersen and Dalgaard, 2013]. Using a *difference-in-difference* methodology, he finds that investment in self-generation has a positive short-run effect on firm revenue but a negative long-run effect on productivity, due to higher cost of self-produced kWh.

[Oseni and Pollitt, 2015] go further by evaluating the expected benefits of self-insurance in 8 countries in sub-Saharan Africa. Because the economic cost of outages can be enormous<sup>1</sup>, this self-insurance is not everywhere affordable. In addition, self-generation does not necessarily reduce the losses caused by electrical shortages because the featured firms might still have large operational vulnerabilities and insufficient means to cope with all other costs stemming from the lack of power. This result is important for it shows that the context of regular outages might cause damages much larger than the capacity to hedge them, which sustains the un-insurable uncertainty rather than the assumption of risk.

Consequently, the frequency of outages does not appear to be the significant determinant for investing in a self-generator; rather, the determining factors are a firm's means or structural constraints, including its size, electrical consumption, trade openness, product variety or the country in which it is located. [Fisher-Vanden et al., 2015] thus advocate the assumption that a firm's expectation of outages -not the actual occurrence of outages- underpins its decision whether to outfit itself with a generator, conditional on its sectoral need and financial means to hedge this risk. Only [Arnold et al., 2006] have attempted to measure the effect of this perception held by firms, using a probit model in the annex without any instrumentation or controls.

Research on firms yields two important conclusions : first, exploring the impact of outages on agents behavior is feasible and second, the expectation of regular outages rather than their simple observation might be the true determinant of agents decision. To the best of my knowledge, this approach has not yet been extended to households. However, the motivation of households to subscribe to electricity might also be rooted in other factors, such as their consumption preferences.

### 1.3 Evaluating the benefits of electrification or reliability ?

With a much smaller number of works, the last strand of the literature has started to evaluate the benefits of electrification for households, considering its impact on other socio-economic activi-

---

1. In Nigeria, the VoLL of outages is 19 times higher than the price of electricity

ties, such as the reallocation of time between household members, education, income and health. Certain authors, such as [Andersen and Dalgaard, 2013] and [Chakravorty et al., 2014], started to evaluate the quality effect on income at the macro and micro levels, respectively. However none of these studies assesses the potential impact of reliability on households behavior, through the creation of conditions for a lasting evolution of consumption preferences.

### 1.3.1 Evaluating the benefits of electrification relies on strong assumptions

A subset of authors have evaluated the impact of electrification from a global perspective. In a seminal work, [Rud, 2012] uses the Green Revolution in India as a natural experiment, employing groundwater availability as an instrument for the share of connected agricultural units. However, the causal impact of industrialization found in that study does not reveal whether firms or households reap greater benefits from electrification. Qualitative studies also relates electrification to socio-economic transformations [Matungwa, 2014] or with electrical appliances [Martins, 2005].

A handful of works have conducted econometric evaluations of the impact of electrification on household outcomes. A referral work, [Dinkelman, 2011] finds a positive impact of electrification on women's employment in South Africa. He uses the land gradient as an instrument, thereby solving the endogeneity of project placement. The electrification program yielded a significant 9% higher level of women's employment in communities that had benefited from it, possibly because increased freedom from home production was converted into greater involvement in micro enterprises.

In Argentina, [Gonzalez-Eiras and Rossi, 2007] tried to assess the impact of electrification on household health based on the use of refrigerators. However, the identification framework did not permit any conclusion regarding health benefits generated by greater access to refrigeration, thus leaving this important question unanswered.<sup>2</sup>

Other works have produced controversial results regarding women's increased free time and children's education. From 1992 to 2005 in Honduras, [Squires, 2015] found a significant negative impact on school attendance associated with a significant increase of the same magnitude in children's employment. Conversely, [Arráiz and Calero, 2015] found a positive effect of solar home system installation on education : children spent significantly more time on homework and achieved more years of schooling in the treated group, possibly due to a favorable impact on time reallocation between adult men and women, with the latter group spending more time per day taking care of children. Using the distance to the grid as an instrument, [Aguirre, 2014] also claims a positive impact on education in Peru.

Regarding the instruments used in these studies, although they are exogenous to the outcomes, they do not appear to be fully external to the grid's geographical extension, which is a major source of endogeneity, as noted by [Lipscomb et al., 2012]. For instance, although groundwater availability for agricultural units met the exclusion restriction for industrialization in [Rud, 2012], it might nonetheless be a policy driver for building new electrical lines in an area settled by existing agricultural units. Furthermore, as stated by [Dinkelman, 2011], utilization of the land gradient relies on prioritization of the grid's extension as a cost function of the altitude. Finally, distance to the grid, which was used by [Squires, 2015] and [Aguirre, 2014], is exogenous to children's education but obviously is not external to grid extension policy, which might be prioritized based on population density.

As clarified by [Squires, 2015], using the distance to the grid as an instrument -because it might be highly correlated with access to electricity- relies on strong assumptions. The first assumption is that the grid is always extending and never shrinking, meaning that distance to the grid should be a decreasing function of time. The second assumptions is that the connection schedule is fully ordered in space, that is, sites are connected in order of their distance to the grid.

---

2. Their study establishes a causal relationship between the privatization of energy companies and access to electricity, and an association between privatization and refrigeration but reveals no significant link between privatization and malnutrition or food poisoning.



Those assumptions are very strong, especially in developing countries, where the electrical grid might be affected by numerous other events that are external to electricity management or development policy. For example, civil wars, vandalism, corruption of connections on the last kilometer lines or even the redistribution of the energy mix might strongly affect the spatial distribution of the grid's resources, such as generator plants, lines, sub-stations and final transformers.

Moreover, the data used in certain studies do not allow fixing a snapshot of electrification at a precise time. For instance, [Squires, 2015] obtained data on the grid's extension starting only in 2012, whereas the period under review begins in 1997. Nonetheless, his study helps to clarify the strong assumptions that underlies the use of distance to the grid as an instrument for electrification; specifically, it has finally been shown to have only a small impact on household decisions whether to connect to the grid [Lee et al., 2014].

In addition, all of the above mentioned studies rely on the implicit assumption of a fully reliable extended grid, but the extension could be the origin of more outages, which reduce the attractiveness of the service and, hence the effective share of the electrified population.

### 1.3.2 Evaluating the impact of reliability on households behavior

None of the above mentioned studies investigates how reliability might support the socio-economic transformations expected from electrification by modifying firms' or households' economic behaviors. Only few empirical works account for the specific benefit of reliability for economic development.

However, [Andersen and Dalgaard, 2013] have found that outages have a significant impact on countries' revenue. In 39 countries in sub-Saharan Africa, an increase in outages by one standard deviation reduces growth by almost one standard deviation, providing evidence that electrical reliability has large potential to increase the revenue of developing countries.

[Khandker et al., 2014] address the reliability issue, but only as a complimentary one to electrification since they not dedicate a specific framework to identify the role of quality. Nonetheless, they provide the first clues regarding the important impact of reliability on households decision whether to connect, and on their subsequent behavior as electricity consumers. Notably, their results suggest that an improvement of service availability can increase the rate of adoption, and show that access to electricity reduces domestic kerosene consumption; reliability may thus transform constrained choices into preferences, with fewer resources dedicated to kerosene lamps.

But then, a large increase in electricity consumption by connected households has only a small marginal effect on their kerosene-purchasing habits. The observational data also shows that under-grid households continue to purchase and consume more biomass for cooking than unconnected households, as also observed by [Arráiz and Calero, 2015].

This surprising result suggests an unobservable parameter, namely, the context of regular and serious electrical shortages that might lead connected households to continue purchasing alternate fuel for lighting.

Only [Chakravorty et al., 2014] have started to evaluate the causal impact of reliability on socio-economic outcomes. With a two-round panel in India between 1994 and 2005, they show that the quality of power strongly increases the benefit of electrification for non-agricultural household income. The marginal impact of reliability appears to be 62% higher than the one of access to the grid.

However, in both studies, the chosen instrument hardly resolves the doubt about the endogeneity of grid extension. In [Khandker et al., 2014], it is doubtful that the individual part of the interaction between the proportion of connected households and their individual characteristics (owned land, age, sex or education) had no direct impact on the outcomes (kerosene purchases, time allocated to biofuel collection or children's education). With respect to enough correlation with the endogenous variable, they argue that peer pressure might offer a convincing explanation why the instrument is not weak. However, peer pressure is clearly not random, and not external, neither to the decision to connect nor to the level of electricity consumption. By interacting trans-

mission line density with the initial level of electrification or quality, [Chakravorty et al., 2014] also allow a central component of the grid to enter into the instrument. Although there is little doubt that investments in transmission lines might not be directly associated with households income, electrical lines are not an external variable to electrification or to power quality, especially given that the world's highest level of on-line losses occur in India [Khandker et al., 2014].

As recently noticed by [Van de Walle et al., 2013], finding a good instrument for grid extension remains a challenge for empirical evaluations in the field of electricity economics.

By utilizing transmission lines density, [Chakravorty et al., 2014] are establishing the power quality as a given assumption for the used instrument.<sup>3</sup> In those conditions, whether power quality might have a reverse effect on the grid's connection level remains an open question. Interestingly, [Van de Walle et al., 2013] argue that using the distance to the primary power source would be less of a concern, because the location of primary energy spots is more likely to be independent to the location of households.

By using lightning, [Andersen and Dalgaard, 2013] introduce an innovative instrument for outages that meets all three required properties for valid instrumentation : it is purely random, strongly correlated with the occurrence of outages, and obviously not a direct factor in countries' revenue variations.

## 1.4 The existing frameworks do not address the uncertainty context of repeated outages

None of the above-discussed studies considers the long-run uncertainty context, which could lead researchers to under estimate the costs of shortages, whereas repeated outages also alter household and firm preferences, turning the latter into constrained choices.

The existing framework in electricity economics provides an incomplete analysis of the costs of uncertainty. LCOE and VoLL remain limited to endogenous measurable parameters ; they do not propose any integration of external risk factors that might impact the economic cost of kWh on a broader basis, such as pilfering or on-line losses [Berthélemy, 2016]. The latter remain un-priced externalities that continue to be paid by the collectivity by causing an over-estimation of the peak-load, which in turn could lead to over-invest in additional capacity. Rental behavior around electricity distribution not only divert a portion of the common good but also exacerbates the risk of outages in particular locations, thereby worsening the impact of uncertainty as an unaccounted negative externality.

This framework also fails to explain why reliability might generate lasting changes in households' way of life. Because it is not insurable, uncertainty might change the agents' long-run decisions, such as the equipment rate of electrical devices in households, or the product mix of firms. The question of how reliability might produce long-term reallocation of the agents' preferences, by smoothing their cost function and enabling them to enter into a broader scope of more complex economic applications, remains unanswered.

Furthermore, no work has evaluated the economic impact of outages on agents' behavior while facing uncertainty. Because the VoLL relies on the consumer and producer surplus theory, it is suitable for evaluating a divergence from an initial stable equilibrium, assuming that the cost of any breach in reliability might only equal the distance from this equilibrium. But the frequency and length of outages might sustain agents' expectations of a persistent low reliability, because from the agents' perspective, shortages are external events. In turn, agents might avoid the service despite their need for it. Those changed expectations could durably modify the ability of the electricity market to achieve a dynamic equilibrium, because underestimated latent demand might lead to an underestimation of the peak load and capacity sizing ; consequently, any enhancement in reliability might trigger a larger-than-expected increase of demand, while supply has been kept constrained,

---

3. Proximity to the network should increase the likelihood of being closer to generation points and therefore receiving a better power supply

triggering worse and lasting outages.

The literature addressing the issue of self-generation opens a possible door for managing the behavioral impact of outages. As rational agents observe a context of persistent uncertainty, they expect that the best predictor of tomorrow's reliability is the level of reliability observed in the past. Because uncertainty is not measurable through any law of probability, hedging its expected costs requires continual means to address the occurrence of shortages and hence a persistent counter-solution, such as self-generation. However, the literature has revealed that this strategy is somehow inefficient, most likely because firms might have to pay triple the permanent fixed cost for electricity consumption : once for the fee to connect to the grid, second for the *capex* for its generator and third for the *opex* to self-produce. In contrast, electricity input would be charged only once to the final consumer as a constant fee in the industrial product.

A persistent distance from equilibrium could thus change the agent's expectations and hence the economic decision whether to connect and use electricity through a marketable contract ; underestimating latent demand could make the disequilibrium even worse for any supply enhancement. To the best of my knowledge, the electricity economics literature lacks a comprehensive framework for the sustainable reliability benefit that the VoLL or electrification evaluation can hardly address.

## 2 Electricity and lightning in Kenya

In 2014, the electricity produced from Kenya's natural endowments accounted for 56% of its capacity (*Figure 1, left*), with a large share coming from geothermal origins (19.1%), which continued to grow in 2015 (26.6%). Notably, Kenya owns the largest single geothermal plant in the world in Olkaria IV (140 MW), and the geothermal industry produces the cheapest electricity in the country.

The electrical sector in Kenya is organized with a central distributor (KPLC) that operates under a PPP mandate, a public grid manager (KETRACO) and a set of producers. The producers comprise KENGEN, a majority government-owned company that produces over 85% of the country's capacity, and independent power producers (IPP) (*Annex A.8*). A state-owned special purpose vehicle is dedicated to the development of geothermal production (GDC). The Rural Electrification Authority (REA) is a state agency that addresses the issue of unconnected under-grid households in rural areas.

In *Kenya vision 2030*, building new capacity and extending new transmission lines (> 132 kV) and distribution lines (below 66 kV) are defined as the two main priorities, leading to two strategic projects : a quantified roadmap for building new capacity (5000+ MW in 2016), for which KPLC is responsible, and the *Last Mile Connectivity* project, which was launched by the REA in September 2015. The latter project aims to connect 70% of households by 2017 by extending the grid of distribution lines and transformers, targeting 314,000 households within 600 meters of 5,320 selected substations. As shown by [Lee et al., 2014], the lack of connections multiplies the marginal cost of grid extension by ten. Therefore, the project includes a special effort for the poorest households, reducing the connection fee from KSh35,000 to KSh15,000.

KPLC had 2 million customers in 2012, 2,7 million in 2014 and should have reached 4,3 million in 2016. However, the rapidly growing customer base could jeopardize reliability, because the rising peak load could trigger a national blackout (*Table 9*). KPLC is rationing supply with planned outages to avoid the worst-case scenario, which has generated tensions between firms and households across the entire country. The historical choice has been to prioritize reliability for firms in order to avoid deterring foreign investors from operating in Kenya.

As a result, frequent outages could have caused reluctance among households to subscribe, because they might consider the cost of service too high given its erratic availability, regardless of their specific budget constraints. Striking evidence of this reluctance is that the connection rate remains below 50% in one-half of Kenya's counties despite the extension of the grid over most of

FIGURE 1 – Production’s capacity in Kenya by fuel type

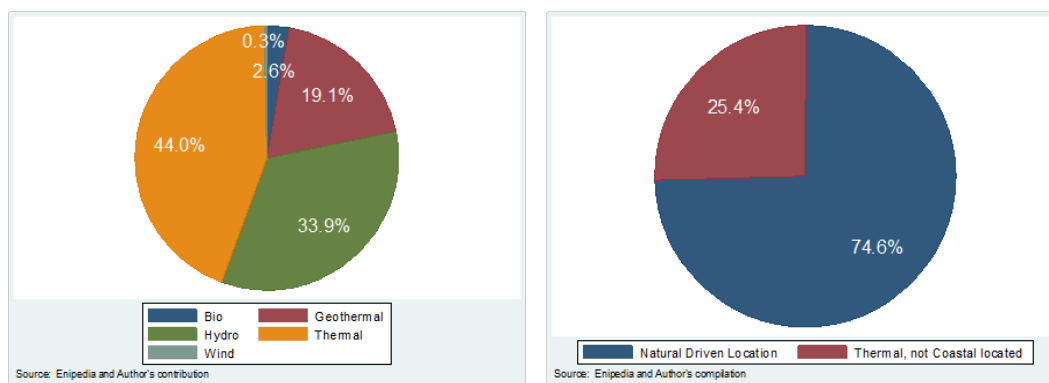
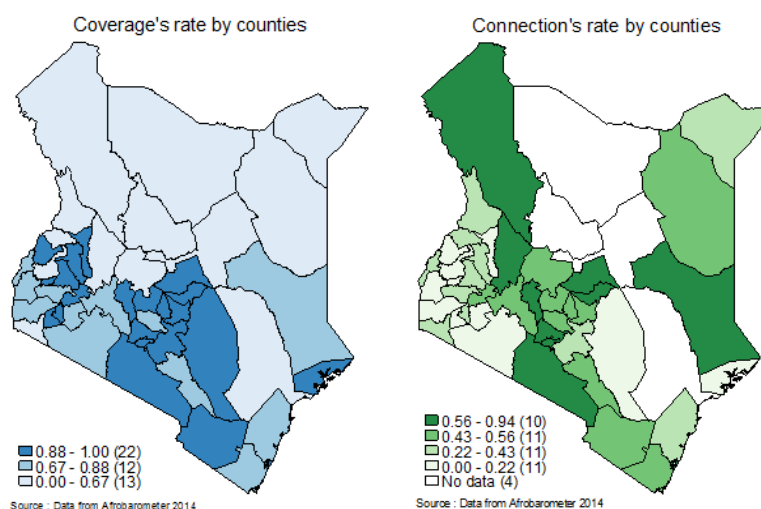


FIGURE 2 – Coverage’s rate and connection’s rate by counties in Kenya



the country (*Figure 2*).

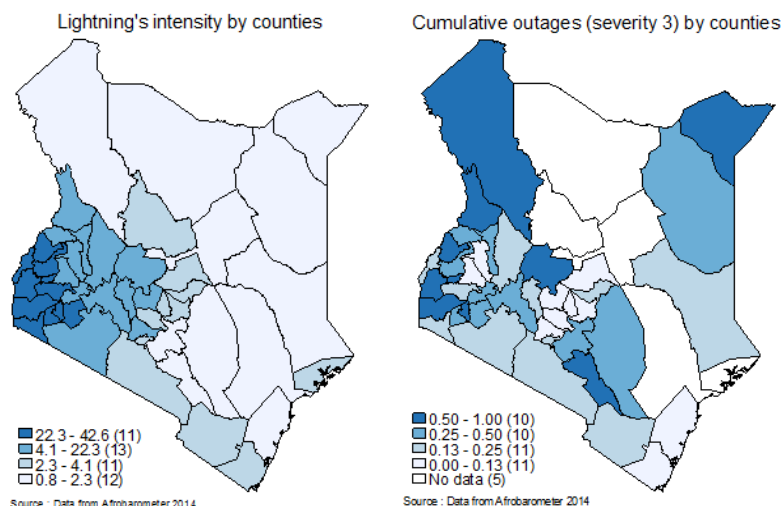
Under equatorial latitude, Kenya is among the countries with the greatest exposure to lightning storms in the world, with a keraunic number that is 9 times higher than that of France. Compared to other sub-Saharan countries, Kenya exhibits a strong heterogeneity in lightning levels, being among the highest in the world in the western mountainous provinces but comparable to Europe in the eastern regions. Intensity and heterogeneity makes this variable a good candidate to be an instrument for outages, as suggested by *Figure 3*.

### 3 Data

The data on electrical coverage, connections and outages are obtained from the Afrobarometer survey on Kenya, from round 6 of the 2014 questionnaire. The database contains 2,397 cross-sectional observations on households that are segmented by county and district. The analysis is based on the 1,989 respondent households that live in geographical units with access to electricity. Access to electricity is known based on the descriptive part of the questionnaire completed by the interviewer. A specific question yields information on the reliability of power, with five distinct levels of availability. Because it also asks whether the household owns an electrical connection, there might be some inconsistency between these answers and the information provided in the descriptive part. Specific filters have been applied to ensure consistent computation of outage indexes.

The Afrobarometer survey also provides descriptive information about the portable assets owned by each household (e.g., radio, television, mobile phone, motor vehicle), the type of water

FIGURE 3 – Lightning and electrical shortages by counties in Kenya



and sanitation to which it has access, the type of shelter in which it lives in and the type of roof on this shelter.

Data on lightning are sourced from the LIS/OTD Gridded Climatology dataset, which collects the number of lightning impacts within 50km<sup>2</sup> sections. These numbers have been averaged by districts for the period 1995-2013.

Climate controls (altitude, temperature and precipitation) are provided by the geographical database of the FERDI, as well as the distance to Mombasa, which is weighted by road quality.

The locations of the generators are provided by the Delft University from its Enipedia collaborative database [Davis et al., 2015], whereas the capacity data are supplemented by the author's research, based on cross-checked media investigations, as of 2014.

*Table 1* provides a summary of the main variables included in the estimation sample.

TABLE 1 – Descriptives statistics for in-sample variables (IVPROBIT)

	count	mean	sd	min	max
Connection	1669	0.574	0.495	0.0	1.0
Large severity outages	1669	0.271	0.280	0.0	1.0
Poverty	1669	-0.037	0.319	-0.9	1.0
Lightning intensity	1669	9.661	10.765	0.6	43.3
Weighted distance to closest plant	1669	9.168	7.885	0.3	47.6
Observations	1669				

## 4 Identification strategy

### 4.1 Main specification

The identification strategy exploits outages frequency as an explicit measurement of the breach between constrained supply and peak load : the occurrence of outages signals the inability of the electrical network to allocate the resource evenly across the country, whereas their frequency highlights the long-run uncertainty context, because repeated equilibrium breaches ultimately become lasting market failures that might alter agents' preferences.

Relying on the parsimonious specification by [Andersen and Dalgaard, 2013], which was also used by [Mensah, 2016], the equation below considers the effect of outages severity on households

connection to the electrical grid (*Connection*), where treatment intensity is measured by the cumulative outage rate for a given  $q$ -frequency level ( $CO(q)$ ).

$$Connection_i = \alpha_0 + \alpha_1.CO_d(q) + \alpha_2.poverty_i + \alpha_3.CO_d(q).poverty_i + u_i$$

where  $i$  is the household,  $d$  is the district, and  $q$  is the severity. As will be discussed more extensively below, all estimations are clustered at the district level ( $d$ ).

Because electricity is distributed at the speed of light, there is an identity between service availability and delivered quality : a shortage of supply is evidence of a poor service design. The expected consequence of low-quality supply should thus be low demand, i.e., the lasting context of outages could yield a low number of connections (*Connection*). Due to its impact on marginal cost, the number of connections is a key variable for sustainable grid extension : it is thus worthwhile to diagnose the extend to which the uncertainty context could act as a barrier to effective electrification.

Therefore, this study aims to estimate the local average treatment effet (LATE) of outages severity ( $CO_d(q)$ ) on the likelihood of connection to the grid, relying on a quantitative variable as an external measurement for treatment intensity. The model can then be used to infer the causal impact of reliability on households decision whether to subscribe.

However, as shown by [Lee et al., 2014], the wealth of Kenyan households might also be a key determinant of their connection ability, much more so than their distance to the grid. Therefore, the model must introduce household wealth (*poverty*) as a crucial control.

Following the work of [Booyesen et al., 2008] on other sub-Saharan countries, a composite index of household assets (*poverty*) is computed through multiple component analysis (MCA) using data on water and sanitation facilities, shelter type and roof type. Because the main objective is to focus on the causal impact of uncertainty, the use of an index provides a synthetic indicator for the main control while still taking into account the multiple dimensions of wealth. The specification thus enriches the work of [Lee et al., 2014], who utilized wall quality, while exploiting the richness of the Afrobarometer data. However, it is necessary to check that the first axis retained as the wealth index concentrates a high level of inertia, hence satisfactorily rendering the correlated dimensions of wealth.

The potential cross-effect between the uncertainty of reliability and individual wealth is captured by introducing an interaction term. For instance, the richest farmers might be only slightly sensitive to the outages context because they may already possess their own generator as self-insurance against shortages. Conversely, in an area that benefits from regular power, households might adopt the electricity contract based mainly on their means. However, because only outages are instrumented, whereas poverty remains strongly endogenous to the connection level, the model will be used only for informational purposes when comparing the impact of quality with the magnitude of the wealth effect.

Relying on *under-grid households*, as in [Lee et al., 2014], the model is performed on households in districts with access to electricity. Nonetheless, because Afrobarometer lacks data on transformer location, this article defines an *under-grid* household as one living in a district  $d$  where at least two households are connected to the grid.

## 4.2 Variables definitions

### 4.2.1 Dependent variable

The dependent variable (*Connection*) is a dummy variable that is equal to 1 for a connected household living in a district with access to electricity. With cross-sectional data from the 2014 survey, the evaluation exploits the geographical heterogeneity of the connection rate, which ranges from 94% in Nairobi to 4% in Homa Bay.

### 4.2.2 Weighted Severity Index of reliability uncertainty based on perception data

As an opinion survey, Afrobarometer provides cross-sectional data as a direct measurement of the uncertainty context. Household statements on outages provide a direct and immediate indicator of the reliability context. I assume that the uncertainty context could have eventually contributed to changes in households perception and report, and this households' memory is part of the actual reported outages severity.

In the first step, a reported outages intensity ( $roi$ ) is computed for a given level of availability ( $j$ ) as the sum of the power availability declared by the households (1 : never, 2 : occasionally, 3 : half the time, 4 : most of the time, and 5 : all the time).

$$roi_d(j) = \frac{1}{n_d} \cdot \sum_{i=1}^{n_d} \mathbb{1}(availability = j), \quad n_d : \text{number of households in the district.}$$

The reported outages intensity is qualified as follows : 1 : total , 2 : serious, 3 : partial, 4 : occasional. Due to the limited number of observations, certain districts had only one connected household. In such cases, the reported outages intensity would be 100% for the level indicated by this household and 0% for any other level. A filter has thus been set to keep only the units with at least two connected households.

In a second step, the *Weighted Severity Index*  $CO(q)$  is defined as the rate of cumulative outages (CO) until severity level  $q$  in a district  $d$ .

$$CO_d(q) = \sum_{j=1}^q roi_d(j).$$

$CO_d(q)$  is thus the cumulative function of outages until a given severity level ( $q$ ). For any district,  $CO_d(q)$  equals 1 when  $q=5$ .

In the severity function  $CO_d(q)$ , a total outage ( $j=1$ ) is not weighted the same as a serious ( $j=2$ ) or partial ( $j=3$ ) outage, given the number of outages at each severity level ( $j$ ). By construction, this function is weighted by the number of outages ( $\sum_{i=1}^{n_d} \mathbb{1}(availability = j)$ ) of each intensity ( $j$ ) in  $roi_d(j)$ . Hence, the indicator is called a *Weighted Severity Index* of reliability uncertainty. (Table 2) summarizes the composition and names attributed to each severity level.

TABLE 2 – Weighted Severity Indexes

Severity ( $q$ )	Outages' intensities included	Qualification
1	Total	Heavy Severity index
2	Total + serious	Half Severity index
3	Total + serious + partial	Large Severity index
4	Total + serious + partial + occasional	Global Severity index

Because severity might range across a wide scale from total to no outage, it is not possible to identify *a priori* the extent to which households might have changed their behavior given the events' severity that they have observed until 2014. In a context where supply is usually erratic, households might actually have adapted their daily behavior, as observed by [Kirubi et al., 2009]. In addition, long-run households behavior might have been shaped by the history of growth : although electricity service is viewed as a given acquirement in advanced countries, households in developing countries may consider electricity as a supplementary value-adding innovation but not primordial, eventually viewing it as a luxury good. In other words, in an uncertainty context, I make the assumption that electricity is considered as a substitutable good.

In these uncertainty conditions, there might be a hidden acceptance threshold above which a household might show a certain level of tolerance to the outages context, whereas below this threshold, the outages context would conversely delay its adoption. Because it remains unobserved by the researcher, the identification must approach this threshold through a gradual ranking strategy, computing the aforementioned range of severity indexes. The significance and robustness of each of them to instrumentation will be then tested in the main specification, with the objective of retaining the model that yields the best answer to statistical tests. A large part of the empirical work has been devoted to assessing the most relevant *Weighted Severity Index*.

### 4.2.3 Poverty index

The poverty index is derived from a multi-component analysis (MCA) of the unconnected assets owned by a household (*Table 3*). This index is the linear combination of the standardized coordinates of the categories on the first axis, weighted by their contribution. It is computed for each household, with positive values for the poorest ones.

TABLE 3 – Active variables in the MCA

Q91a. Own radio	radio
Q91c. Own motor vehicle, car or motorcycle	motor
Q91d. Own mobile phone	mobile
Q92a. How often use a mobile phone	use_mobile
Q93a. Source of water for household	use_water
Q93b. Location of toilet or latrine	sanit
Q104. Type of shelter of respondent	shelter
Q105. Roof of respondent's home	roof

The first axis of the MCA concentrates 54% of the inertia, whereas the second (21%) and third axes (3,3%) are largely built from the missing values of certain peculiar categories. Hence, the first axis captures all meaningful information and can be used with confidence as a synthetic composite index of poverty (*Table A.10*).

### 4.3 Neighboring effect

As noticed by [Khandker et al., 2014], the observed connections level might occur partially by peer pressure. Although the neighbor example is obviously not an instrument for outages (see section I), it might nonetheless affect the dependent variable (*Connection*).

In a context of high connection costs and low power reliability, subscribing to electricity might actually result from a positive externality of social network, given the neighbor example. Because electricity might be perceived as a luxury good in a scarcity context, the leadership role of early adopters might strongly influence households' decision to subscribe. The neighbor example might thus sustain a more or less sticky diffusion or barrier process : the adoption of electricity might have been much higher in one district than in another because households in the first district have been encouraging each other to subscribe (diffusion) whereas the collective memory of persistent low reliability might have led to a mutual confirmation bias not to subscribe in the second district (barrier). However, cross-sectional data do not allow the observation or estimation of any serial correlation that supports such a process.

I formulate the assumption that the current dispersion of connections across districts as observed in 2014 partially results from such a past diffusion process among the households within each district. Nevertheless, I do not assume the variance in space to be the full result of past variance in time and thus do not make the strong assumption that a cross-sectional regression could be equivalent to a within regression and would explain the dependent variable in the same way. Contrarily, I assume an unobservable past-time variation, while also assuming that its resultant might be observed as a footprint on the present geographical data.

Therefore, the assumption of independent and identically distributed observations in the geographical dimension can not be hold, leading rather to assume heteroscedasticity among districts.

The neighbor effect is thus captured by clustering all estimations, following [Chakravorty et al., 2014] and [Khandker et al., 2014]. Because the model combines an individual-level variable (the *poverty index*) and an aggregated variable (the *Weighted Severity index*), the use of clusters solves the Moulton bias [Moulton, 1990]. Specifically, computing the variance-covariance matrix by cluster



corrects the under-estimation of the standard error that would otherwise results from the use of an aggregated variable. The significance of the coefficients can then be properly diagnosed, avoiding any spurious regression.

#### 4.4 Endogeneity issues

The evaluation must address three risks of endogeneity. First, a major determinant of the connection level might have been omitted from the specification. Second, there is a risk of reverse causality because the growing number of connected households could yield more frequent outages (*Table A.8*). Third, the data are sourced from a survey questionnaire and thus might be distorted by a measurement error.

As for potential omitted variables, the literature suggests two other obstacles to grid connection [Lee et al., 2014], [Khandker et al., 2014] : the high cost of connection and poor building quality. Because connection cost is a matter of relative wealth, the poverty index should be a suitable proxy for capturing this effect. As the index includes the type of shelter, it also captures building quality, which is thus not omitted from the explanatory factors. The poverty index can be thus used as a proxy to control for both obstacles together. However, because the index was built from an MCA, a robustness check should test for any residual correlation of shelter type with the error term.

Although the distance to transformers has been shown to have no significant impact on electrification, it has an indirect correlation through its interaction with building quality [Lee et al., 2014]. Were there any residual correlation between connection and distance to transformers, it would be captured by clustering under-grid households in the same district, with the implicit assumption of a distance to a notional centroid transformer.

However, there still might be forgotten or unknown omitted variables, even minor ones : the remaining endogeneity that they could generate would be solved by a relevant instrument.

Seven major causes of outages are known [KPLC, 2016] : extreme weather conditions (wind, lightning, rain, floods); contacts by animals with the lines or transformers; growth of or falling trees; vehicular collisions; vandalism; aging equipment; and planned interruptions. Based on the detailed qualitative assessment presented in *Table A.11*, wind, rain and floods do not meet the exclusion restriction due to their strong zone effect. Animal contact, tree growth and vehicular collisions easily meet the exclusion restriction but would provide only weak instruments. Vandalism is obviously endogenous to poverty, and the age of installations is by definition neither random nor an exogenous factor.

Finally, only lightning meets the three required properties for an instrument : it is purely random, strongly correlated with the occurrence of outages and acceptably not a direct cause of reduced individual connections (*Table A.12*).

Lightning is an external random phenomenon that can cause a variety of direct damages to the grid through thermic, mechanical or electrical shocks. When a local strike hits a grid device, it has a strong leverage effect, triggering outages in large areas due to the propagation of excess voltage along the lines and an overload counter-wave effect caused by the automatic triggering of circuit breakers. These mechanisms make lightning's correlation with outages much higher than the scarce possibility of large-scale direct damages to individual connections. The identification exploits then the strong heterogeneity of lightning in Kenya (see Section 2).

As mentioned above, a potential reverse-tide effect might occur, that is, a power shortage can cause a sudden overload along the electrical wires that in turn could trigger new outages in the neighboring districts (*Table A.11*). The lightning intensity in surrounding districts is thus also introduced as a candidate instrument.

A third instrument has been introduced, using the distance from the district's centroid to the closest generator. A condition for the supply to meet the peak-load, the total power capacity that feeds the grid plays a key role in the occurrence of outages, because the short-run demand for electricity is inelastic. However, as soon as there are bottlenecks within the network, i.e., technical

devices are not of the same quality in all locations, primary generators will not be able to saturate the network with a given amount of produced electricity. As shown by *Figure 9*, part of the Kenyan grid still transports electricity using old 132 kV lines that were built before independence, and enhancement sub-stations have been built mainly along those lines. In these conditions, a dwelling located closer to a production center might be more likely to receive uninterrupted power.

As noticed by [Van de Walle et al., 2013], generator settlement is constrained much more strongly by the location of or access to primary energy than by consumption needs. Interestingly, the energy mix in Kenya largely depends on primary resources that are geographically constrained and thus strongly determine the establishment of utilities, especially the geothermal plants that produce the largest share of Kenya's electricity. Overall, 75% of installed capacity is directly related to the country's natural endowments (volcanos, rivers, lakes, wind, and Mombasa harbor on the coast) (*Figure 1, right*). As for Mombasa harbor, most if not all of the fuel plants have been built in or around the city because it's the only sea harbor in Kenya, which is used to import oil and coal. Because the economic activity and population of Kenya are concentrated in the center and west of the country, long transmission lines have been drawn to Nairobi, Eldoret and Kisumu. In the same vein, the large wind project in Lake Turkana, located in the far North, will require 600kV long transmission lines toward Eldoret and Nakuru.

Under assumption of a heterogeneous grid, the geographic constraint of utilities' location supports the exclusion restriction. Proximity to a power plant might be correlated with fewer outages while also being independent of the individual connection because the voltage discrepancy makes it technically impossible.

The two distances, one to the transformer and the other to the primary generators play two different roles : the first is a small factor in electrification, whereas the second is a good candidate for instrumentalizing reliability. Because transformers feed the last mile of distribution, they are close to the end of the grid and are themselves fed by the transmission lines network ; thus, transformers might suffer the consequence of an upstream tension fall. The distance to transformers is thus a possible explanatory factor for electrification, but not an external cause for outages. And whereas [Lee et al., 2014] used distance to the closest transformer as a potential explanation for subscriptions, this study seeks instruments for outages.

The distance to the closest generator meets instrumentation requirements because (1) it is both an external and random parameter relative to outages ; (2) the distance to the plant has no direct relationship with the decision to connect. Whether households that are located closer to a plant are more likely to subscribe because they expect fewer outages, it is exactly the information that the instrument intends to capture.

The Weighted Distance to the closest plant is defined as the minimum of the weighted distance to all generators, where the weight is the inverse of the plant's capacity share of total power production.

## 4.5 Estimation methodology : severity index selection, instrumentation and non-linear calibration

A first OLS estimation checks for any baseline effect and seeks for the relevant severity level for measuring this effect. A 2SLS then identifies the causal impact using lightning in the district, lightning in neighboring districts and the WCP index as instrumental variables to solve endogeneity issues. Finally, an instrumented probit (IV Probit) confirms the preferred specification for assessing the impact of reliability on the likelihood of connection. This sub-section describes the identification steps that underpin the preferred specification (see section V).

### 4.5.1 Severity Index selection

The gradual ranking strategy intends to approach the hidden threshold of the connection decision by selecting the relevant WSI. Selection criteria are based on backward-reading of statistical

tests according to the estimation framework (*Tables A.14, A.17, A.19, A.20, and A.22*). The test corresponding to the main statistical objective is verified first, then one checks whether the previous test was already passed successfully, the ante-penultimate test also, and so on, such that all tests composing the decision chain are satisfied. If a test is failed after the first steps were met, one switches to the closest model meeting the same initial set of tests in the decision chain.

The selection process was applied independently for each estimation framework, and the Large Severity Index was selected for each framework.

#### 4.5.2 Entry models : OLS at the district level

Yielding the lowest AIC and a p-value equal to 0.000, the Large Severity Index was retained as the best indicator of power quality (*Table A.14*), in accordance with the following equation :

$$Connection_i = \alpha_0 + \alpha_1.CO_d(3) + \alpha_2.poverty_i + \alpha_3.CO_d(3).poverty_i + u_i.$$

In this simple LPM specification, both indexes (severity and poverty) are significant at the 0.1% level. Their interaction is also significant, at the 1% level. The number of clusters (90) ensures that the standard error is converging to its true value, leading to a proper assessment of the estimates' significance (*Table A.15*).

The entry model highlights the negative effect of outage uncertainty (*Table A.16*) as a possible channel of the result found by [Andersen and Dalgaard, 2013] at the country level : the impact of outages on growth might be rooted in the reliability uncertainty that deters certain individual Kenyan households from connecting to the grid.

The wealth index appears to be an important control variable ; indeed, the base specification would have been strongly downward biased (-0.515 instead of -0.313) if this factor had been omitted.

#### 4.5.3 Instrumentation in a linear setting

Because it successfully passed all tests for instrumentation (*Table A.17, equation iSev3iv*), the Large Severity Index yields a robust model. The three instruments are strong enough (Stock-Yogo < 25 and first-stage F = 6.7) and would still yield consistent estimates if they were weak (Anderson-Rubin test : p = 0.000). The model is adequately identified on outages (under-identification test : p = 0.004) which are confirmed to be endogenous (endogenous test : p = 0.016). Finally, the instrumentation yields more consistent estimates than the OLS does (Hausman test : p = 0.02).

Using three instruments, the model is possibly over-identified once the interaction between severity and poverty is introduced (Hansen test : p = 0.092) ; this issue will be refined once the probit is instrumented.

However, the linear estimation does not ensure that the predicted connection level is a probability belonging to a [0;1] support. This shortcoming is all the more constraining because the study aims to predict which unconnected households should be selected for potential policy applications such as targeted incentives.

#### 4.5.4 Calibration of the non-linear modeling

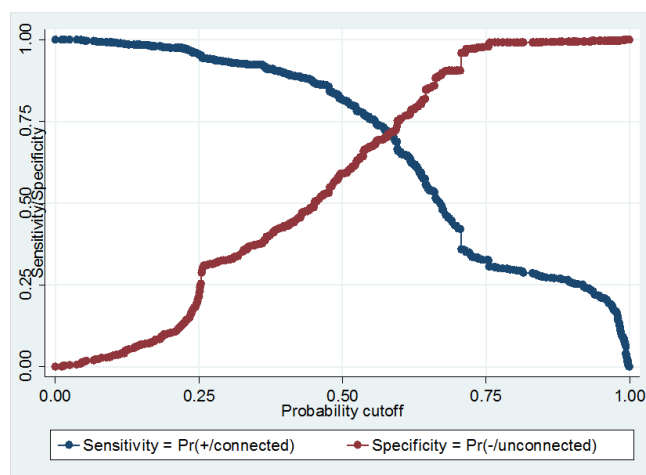
For the outcome to be a probability, a probit estimation is more suitable. A first attempt was made with a simple probit, which was then instrumented in a second step.

Applying the relevant diagnosis criteria, the simple probit led to the selection of the Large Severity Index as the best index (*Table A.19*).

Because the referral group is defined by connected households, the model predicts the likelihood of connection. However, from a policy perspective, one would expect a greater benefit to decrease the marginal cost of grid extension by increasing the accurate detection of unconnected households, compared with the simple cost of using the model. The latter has thus been calibrated to maximize the exact prediction of unconnected households by setting the cutoff in the diagnosis table at

75% (*Table A.19*). As shown in *Figure 4*, this level maximizes the model's ability to identify unconnected households (*specificity*) at the cost of lower recognition of connected households (*sensitivity*).

FIGURE 4 – 75% cut-off on specificity



The model was then instrumented using the set of three qualified instruments from the 2SLS framework, utilizing the IV probit procedure that combines the probit modeling with first-stage linear regression.

However, none of the candidate IVprobit model with three instruments could pass the backward-decision criteria (*Table A.20*). The first-stage indicates that the issue arises from lightning by neighboring districts (*Table A.21*); although lightning and the distance to the closest generator are significant at the 10% level, lightning in neighboring districts is obviously not. Although there is no advanced test of over-identification in Stata's `-ivprobit-` procedure, it seems intuitive that too many linear components in the first-stage regression might over-fit the model for a non-linear estimation. In addition, the previous borderline Hansen test in the 2SLS framework suggested the possibility of too many instruments.

Consequently, only the two main instruments were kept for further modeling : lightning (p-value = 0.090) and weighted distance to the closest electrical plant (p-value = 0.000).

## 5 Empirical results

### 5.1 Preferred specification

The model with the Large Severity Index and two instruments successfully passes all selection tests (*Table A.22, equation iSev3*), showing the best discriminatory ability (ROC : 76.8) and consistent instrumentation (endogeneity : p = 0.000; lightning in first-stage : p = 0.006; Hausmann : p = 0.017). This model exhibits accurate estimates at the 0.1% level for all variables in reduced form (*Table 4*), with both excluded instruments now strongly significant in the first-stage (below 1%).

Because it yields both accurate and unbiased estimates, this model is retained as the preferred specification. For the policy maker, it could be applied to infer the likelihood that any out-of-sample household is not connected, provided that the same data could be gathered to feed the coefficients.

TABLE 4 – Connection's likelihood (IVPROBIT : reduced form and first-stage)

	Point estimates	Standardized coef.
Reduced form		
Large severity outages	-2.573*** (0.458)	-1.454
Large severity outages x Poverty	4.581*** (0.786)	
Poverty	-3.026*** (0.331)	-1.949
Constant	0.797*** (0.153)	
First-Stage		
Large severity outages x Poverty	1.014*** (0.212)	
Poverty	-0.0928 (0.062)	-0.106
Lightning intensity	0.00616** (0.002)	0.237
Weighted distance to closest plant	0.0110*** (0.003)	0.309
Lightning intensity x Poverty	0.00202 (0.003)	
Weighted distance to closest plant x Poverty	-0.00654 (0.005)	
Constant	0.0940** (0.034)	
Observations	1669	
Clusters	90	
AIC	1466.5	
Wald Chi2	250.6	
p-value (Wald)	0.000	

Probit model with endogenous regressors : ivprobit of connection

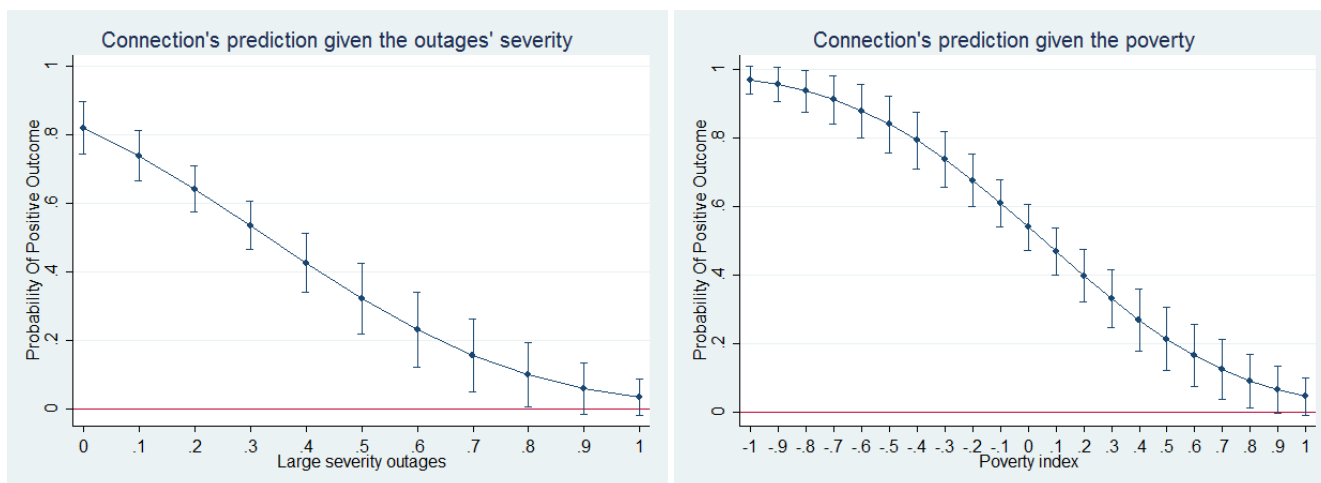
Instrumented variables : Partial outages, Partial outages x poverty

Excluded Instruments : Lightning, Wghtd. dist. to closest plant, Poverty interacted with both

Variance : Robust cluster by DISTRICT, SE in parenthesis

\*  $p < 0.05$ , \*\*  $p < 0.01$ , \*\*\*  $p < 0.001$

FIGURE 5 – Connection's probability given the level of reliability or poverty



## 5.2 Evaluation of the impact of Large Severity outages on the connection decision in a poverty context

Because the model consistently neutralizes the risks of endogeneity, it can now be confidently used to explore the impact of reliability and to compare this impact with the effect of poverty. Relying on [Williams, 2012] *Table A.24* checks the initial statistical conditions of this evaluation.

### 5.2.1 Predicted likelihood of connection

As shown by *Figure 5*, the predicted probability of connection is not linear at the reliability or the poverty level. Interestingly, it is also incomplete given outages frequency : although the probability of finding a connected household is almost 0 where the rate of Large Severity reaches 100%, it amount only to 80% where this rate equals 0. There might be additional occasional outages that could possibly have a residual effect, deterring households from subscribing to an electricity contract. This point will be further addressed by extending the model to the next severity level (section VII).

### 5.2.2 Marginal effects

How does the predicted likelihood of connection change when reliability deviates from its mean or from any other referral values in the sample? Answering this question entails an examination of the slope of predicted connection given the outage frequency in *Figure 5*, with the poverty index fixed at a specific level (its mean or median).

With the observed values in the sample, a 1 percentage point higher frequency of Large Severity outages causes a 0.673 percentage point fewer connected households (*Table 5*). Comparing the standardized estimates in *Table 6*, the average marginal effect (AME) of reliability (-0.196) is 10% larger than the effect of poverty (-0.178).

However, these estimates depend on the fit of outages and poverty distributions to their true distributions in the Kenyan population, i.e., on the sample representativeness. With 1,669 observations, a normal distribution can be confidently assumed for the poverty index, and so it is in the sample (not shown). Applying the central-limit theorem, the sample mean of the poverty index can be considered a referral value, already converging to and thus representative of its true value in the Kenyan population. However, outages perception is not normally distributed across the districts (not shown). Therefore, it is better to assess the marginal effects at several referral values of the severity index.

At averages of the explanatory variables (*Table 5, column 2*), a 1 percentage point higher frequency of Large Severity outages causes a 1.079 percentage point fewer connected households ;

TABLE 5 – Marginal effects of third severity's outages and poverty (IVPROBIT)

	Average Marginal Effect	Marginal Effect at Means	Marginal Effect at Median	Marginal Effect at 1st decile	Marginal Effect at last decile
Large severity outages	-0.673*** (0.102)	-1.079*** (0.188)	-0.994*** (0.162)	-0.076* (0.034)	-0.257** (0.086)
Poverty	-0.516*** (0.081)	-0.703*** (0.112)	-0.814*** (0.116)	-0.044* (0.020)	0.046 (0.121)
Observations	1669	1669	1669	1669	1669

Probit model with endogenous regressors : ivprobit of connection

Instrumented variables : Partial outages, Partial outages x poverty

Excluded Instruments : Lightning, Wghtd. dist. to closest plant, Poverty interacted with both

Variance : Robust cluster, SE in parenthesis

\*  $p < 0.05$ , \*\*  $p < 0.01$ , \*\*\*  $p < 0.001$

TABLE 6 – Marginal effects of third severity's outages and poverty (IVPROBIT)

	Average Marginal Effect	Marginal Effect at Means	Marginal Effect at Median	Marginal Effect at 1st decile	Marginal Effect at last decile
Stdzd Large severity	-0.196*** (0.030)	-0.304*** (0.052)	-0.281*** (0.045)	-0.028* (0.012)	-0.086*** (0.023)
Stdzd Poverty	-0.178*** (0.027)	-0.242*** (0.037)	-0.269*** (0.040)	-0.019* (0.008)	-0.021 (0.033)
Observations	1669	1669	1669	1669	1669

Conditional marginal effects : margins of connection, Standardized explanatories

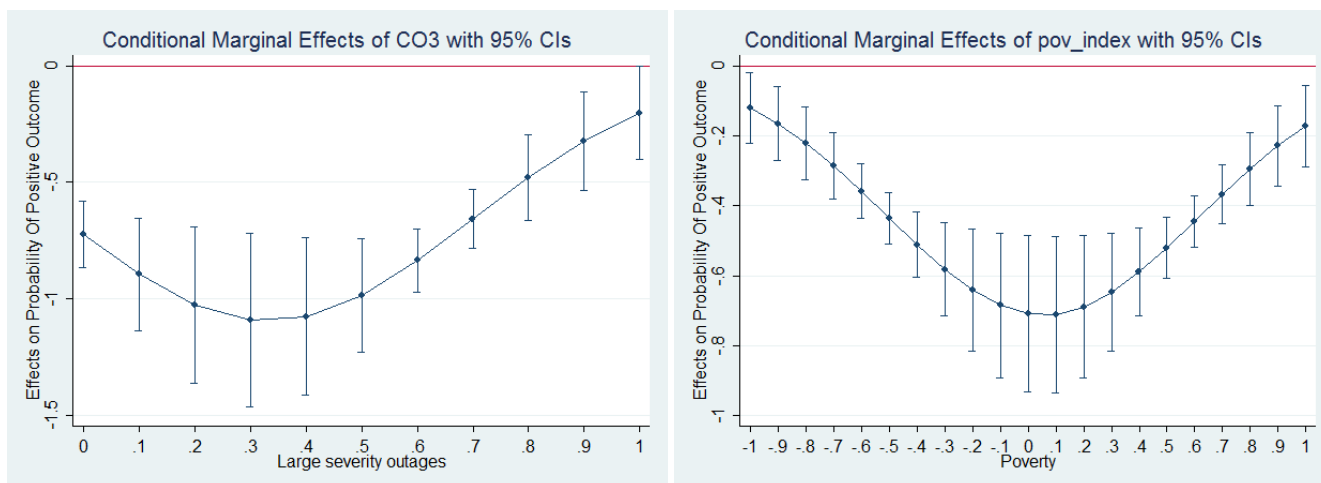
Instrumented variables : Partial outages, Partial outages x poverty

Excluded Instruments : Lightning, Wghtd. dist. to closest plant, Poverty interacted with both

Variance : Delta-method delta, SE in parenthesis

\*  $p < 0.05$ , \*\*  $p < 0.01$ , \*\*\*  $p < 0.001$

FIGURE 6 – Conditionnal Marginal effects at means of reliability and poverty



or 0.994 less in a median district (*column 3*). A comparison of the standardized estimates (*Table 6*) indicates that the impact of outages severity (-0.304) could be 26% higher than the effect of poverty (-0.242).

This result provides evidence that an unreliable electrical service acts as an obstacle to subscriptions growth and that the impact of low reliability could be greater than that of household poverty. Looking at the impact in median districts would be even more robust (*Table 6, column 3*): the impact of outages severity (-0.281) remains 5% higher than the effect of poverty (-0.269), which is a result to keep as a lower bound.

For districts in the best situation, that is in the first decile of power reliability and the first decile of poverty (i.e., the wealthiest ones) (*Table 6, column 4*), the standardized impact of reliability (-0.028) could be 47% higher than the effect of poverty (-0.019).

For districts in the worst situation, that is, those with the highest frequency of Large Severity outages and the highest poverty index (*Table 6, column 5*), the effect of poverty is not more significant; in those districts, households are only sensitive to the outages context (-0.086), although they are three times less sensitive than households in median districts (-0.281).

### 5.2.3 Conditional Marginal effects

The impact of reliability is not always the same with respect to its own level (*Figure 6*) or taking into account its interaction with poverty (*Figure 7*).

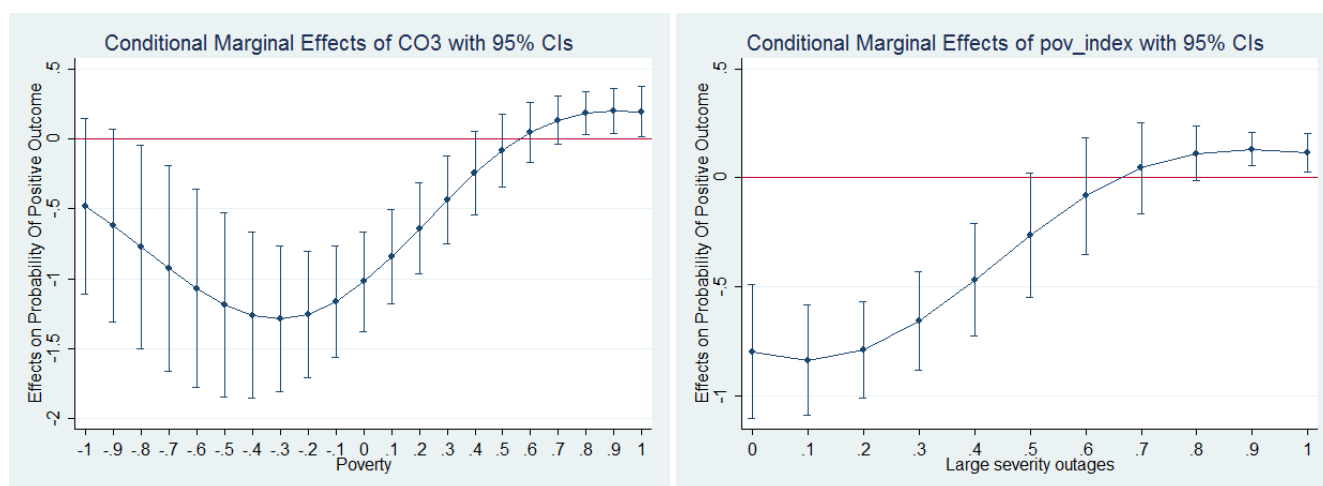
Its magnitude is greatest (in absolute value) in districts where the rate of Large Severity outages reaches 30% (*Figure 6, left*: -1.09). Here, any quality upgrade in distributed power (a shift to the left) has the greatest potential to trigger new subscriptions. Conversely, in districts where Large Severity outages are very frequent (100%), the marginal impact on the decision to subscribe is lower (-0.203), although still significant: where reliability is too low, any quality upgrade would have only a smooth effect on households connection. Because outages are perceived as occurring far too often, customers might be reluctant to believe in any enhancement of reliability: households are not myopic to the uncertainty context nurtured by frequent and persistent outages.

For power risk management of electrical power, this result is important because it shows that reliability has the potential to trigger cumulative gains: any outages reduction in a relatively well-supplied district would achieve a higher subscriptions gain than in a poorly supplied district; and this gain would be highest in the districts that are not too far away from the electrical stability norm. From a policy perspective, poorly supplied areas demand a higher quality effort to reach the customer level that has already been achieved in the most advanced districts.

The model also captures the role of middle-rich households (*Figure 6, right*). Specifically, the magnitude of the wealth effect is greatest (-0.71) where the poverty index reaches 0, which is



FIGURE 7 – Marginal effects at means of interacted reliability and poverty



a central level of the index. Among households with intermediate wealth, being one unit richer (shifting the poverty index to the left) has the greatest potential to generate more subscriptions.

Conversely, among the richest households ( $poverty = -1$ ), the wealth effect is small (-0.172). Any lower wealth (poverty index to the right) would have only a smooth negative marginal impact on the connection decision of richest households. This is also the case among the poorest households (-0.120). Being one unit wealthier (index to the left) would lead to only a slight higher level of connections of poorest households. The non-linear effect of poverty could be due to its interaction with exposure to outages severity.

The impact of reliability is actually not the same -and is even not the same way significant- given households wealth (*Figure 7, left*). For a poverty index between 0.4 and 0.7, outages severity has no significant impact on the connection decision. Above 0.8, the impact is borderline significant and might be considered cautiously. Below -0.9, outages severity is also not significant. Because the width of the confidence interval grows as the index decreases, the -0.8 level should also be considered cautiously. The richest and poorest households are not sensitive to the uncertainty context caused by repeated severe shortages.

In contrast, Large Severity outages have a significant negative impact on households with a poverty index between -0.7 and 0.3, but not of the same magnitude; in absolute value, its maximum (-1.28) is for a poverty index equal to -0.3. Low reliability has the greatest deterrence effect among households with intermediate wealth, which are the most reluctant to subscribe in a context of uncertainty. For higher reliability, middle-rich households are thus the most likely to buy an electricity contract.

In the dual approach (*Figure 7, right*), where Large Severity outages are too frequent (above 50%), the poverty index is not significant. In districts overexposed to severe outages, households wealth or poverty is not the reason for the failure to subscribe. This result is important because it confirms the uncertainty assumption : where outages severity is too intense, households budget constraint vanishes, and only the perception of outages severity determines the decision to not buy the service. Households are not myopic to the context that acts as the strongest obstacle to subscriptions, possibly overriding their budget constraint.

On the opposite, in districts that enjoy higher reliability (a Large Severity Index below 50%), the wealth level contributes to influence the households connection, albeit with a maximum magnitude (-0.837) that is 35% lower than their sensitivity to outages (-1.28). There is a tolerance threshold (reliability > 50%) above which the wealth effect plays a significant role in the adoption decision but below which only the uncertainty context explains the refusal to subscribe.

To summarize, the richest and poorest households are not sensitive to power reliability. Conversely, the highest impact of reliability affects the middle-rich households. In addition, the positive wealth effect occurs only where reliability is greater than 50%; in this case, the wealth effect is

significantly positively correlated with reliability. But as soon as reliability falls below 50%, the wealth effect vanishes.

Low reliability has the greatest deterrence effect on unconnected middle-rich households; conversely, if power were more reliable, these households would be the most likely to connect, provided that they live in a district where outages are not too frequent among their neighbors. In the poorest districts, households are not sensitive to the quality of electricity but this result could come from particularly fragile regions (see section VI).

The policy maker could opt to take action only in districts where reliability is not already too low. However, even in districts in the worst situations (i.e., with the lowest power quality and highest poverty) the policy maker should still prioritize the enhancement of reliability, because under-grid households' decision to subscribe remains sensitive to service uncertainty much more than to wealth (except in fragile regions, see Section VI), especially in districts where service might have been overly neglected and only the reliability effect dominates. Bringing an unavailable service to market let non-myopic households to recognize its low value, regardless of their wealth.

## 6 Robustness checks

*Table 7* controls for the stability of the Large Severity Index estimate in the preferred specification (*column 1*), with respect to potential omitted variables.

Columns 2 to 5 follow [Andersen and Dalgaard, 2013] with altitude replacing the coastal dummy. The impact of outages severity is robust to the inclusion of Altitude (*column 2*), Temperature (*column 4*) and Latitude (*column 5*): introduced one at a time, these variables are not significant and modify the marginal effect of outages severity only slightly.

Precipitation (*column 3*) seems to be significantly correlated with a lower level of connections in Kenya. This omitted variable does not change the direction of the impact of outages severity, but substantially reduces its magnitude (-0.415); in contrast [Andersen and Dalgaard, 2013] found precipitation to be insignificant. Most likely, rainfall is partially correlated with storms, and thus captures a partial effect of lightning, hence also of outages. As evidenced by their VIF in the 2SLS setting (1.01, not shown), precipitation is fully orthogonal to the hyperplan of the other variables. Therefore, precipitation should have been used as a supplementary instrument to lightning, although satisfaction of the exclusion restriction would have been weaker (*see Table A.11*) and the model is already adequately identified (see section IV).

Rural location (*column 6*) is also correlated with a lower level of connections (-0.330), yielding a lower but still negative estimate for the outages severity index (-0.389). In 2014, connections to the electrical grid were less likely to be observed in rural districts of Kenya, but rural location does not change the sign of the evaluated impact.

Taking both variables into account (*column 10*) reduces the marginal effect of outages severity (-0.268) while maintaining its negative sign.

The results of [Khandker et al., 2014] also suggest a possible arbitrage between electrical connection and the price of kerosene. The latter is approximated by the distance to Mombasa weighted by the condition of the road (*column 7*), but has no significant impact on the adoption of electricity. In gross value, distance to the main activity centers in Mombasa and Nairobi (*columns 8 and 9*) is neither significant.

As seen in section IV and also suggested by the results of [Lee et al., 2014], it is necessary to check for any residual correlation between shelter type and the error term (*Table A.23*). The referral category is defined by non-traditional formal houses, which account for 73% of the estimation sample. Certain types of shelters have significant residual effect: traditional huts (11% of the estimation sample) are less connected, whereas flats or single rooms (12% of the sample) are significantly more (0.240 or 0.108). However, all shelter types have only a slight impact on the estimated marginal effect of outages (-0.620).

A closer examination of the map of the electrical grid in *Figure 9* suggests a South-east to

TABLE 7 – Connection's likelihood (IVPROBIT) - Robustness to additional controls

	(1)	(2)	(3)	(4)	(5)	(6)	(7)	(8)	(9)	(10)
Large Sevy. out.	-0.67 (0.00)	-0.67 (0.00)	-0.42 (0.00)	-0.68 (0.00)	-0.64 (0.00)	-0.39 (0.00)	-0.59 (0.00)	-0.64 (0.00)	-0.58 (0.00)	-0.27 (0.00)
Poverty index	-0.52 (0.00)	-0.52 (0.00)	-0.66 (0.00)	-0.52 (0.00)	-0.53 (0.00)	-0.59 (0.00)	-0.55 (0.00)	-0.53 (0.00)	-0.55 (0.00)	-0.65 (0.00)
Altitude		-0.00 (0.65)								
Precipitation			-0.00 (0.00)							-0.00 (0.00)
Temperature				0.00 (0.58)						
Latitude					-0.01 (0.52)					
Rural rate						-0.33 (0.00)				-0.32 (0.00)
Wghtd dist. Mombasa							-0.00 (0.45)			
Dist. to Mombasa								-0.00 (0.80)		
Dist. to Nairobi									-0.02 (0.25)	
Observations	1669	1669	1669	1669	1669	1669	1669	1669	1669	1669

Average marginal effects : margins of connection

Instrumented variables : Partial outages, Partial outages x poverty

Excluded Instruments : Lightning, Wghtd. dist. to closest plant, Poverty interacted with both

Variance : Delta-method delta, SE in parenthesis

North-west development axis that might have left the arid and sparsely populated North-eastern regions at a lower stage. Although the estimation has been clustered by districts, it is worthwhile to check model performance in different macro-areas.

TABLE 8 – Connection’s likelihood (IVPROBIT) - Robustness to areas filters

	(1)	(2)	(3)	(4)	(5)
	Preferred	Without North	Rift Valley	Nyanza	Western
Large Severity outages	-0.67*** (0.10)	-0.70*** (0.11)	0.18 (0.33)	-0.25 (0.15)	-0.26 (0.31)
Poverty index	-0.52*** (0.08)	-0.54*** (0.09)	-0.80*** (0.14)	-0.91*** (0.18)	-0.50** (0.19)
Observations	1669	1629	344	192	104

IVPROBIT model, LHS : Connection

Standard errors are in parenthesis : \* for  $p < .05$ , \*\* for  $p < .01$ , and \*\*\* for  $p < .001$

Variance : robust clusters by Districts

Instrumented variables : Partial outages Partial outages x poverty

Excluded Instruments : Lightning, Wghtd dist. to closest plant, Poverty interacted with both.

Filtering the North-eastern region (*Table 8, column 2*) does not substantially change the evaluation. On the opposite, the reliability effect disappears in specific western regions (Rift Valley, Nyanza, and Western) due to the high level of poverty (see *Figure 10*). As shown by the margin analysis (see section V), outages severity has no effect where poverty level is too high : the disappearance of this effect comes from certain western parts of the country. Along Lake Victoria and Uganda, only poverty deters households from subscribing, with the effect being up to 75% higher in Nyanza (-0.907) compared with the entire country (-0.516). The REA should be advised to prioritize the reduction of connection cost in those western regions.

Additional checks have been performed using the `-ivvif-` procedure incorporated by Roodman in Stata, and a `Dfbeta` with the OLS specification. The first checks the variance inflation factor in the 2SLS framework, and the second aims to identify the leverage effect of any peculiar individuals in the data. The maximum VIF value (6.93) shows a reasonably low risk of near-collinearity between the dependent variables. Regarding the second check, 39 households report a `Dfbeta` with respect to outages over 4.8%, which is the relevant threshold for 1,669 observations. Their maximum influence is +13.3% and they are mainly from western counties. Given the negative sign of the outages’ coefficient, excluding these households from the sample would make the estimate an even lower negative. Therefore, the evaluated magnitude is conservative. Regarding the poverty index, none of the in-sample households exceeds the threshold.

## 7 Extended simulation, policy implications and concluding remarks

As a proxy for the Global Severity index (*Table 2*), an extended model suggests that the total effect of reliability may actually be higher than the Large Severity index’ identified in section V.

In *Table A.27*, adding occasional outages to the preferred specification as a control suggests that the magnitude of the Large Severity index could be even larger than the identified impact (i.e., -0.977 instead of -0.673) : the preferred specification thus appears to yield a conservative estimate, while remaining the best identified one. Interestingly, occasional outages have a direct significant negative effect on the probability of connection (-0.613) that comes in addition to the impact of total, serious and partial outages (-0.977). This result suggests a policy priority to resolve outages at their heaviest severity, starting with the least severe ones.

The marginal effect of the poverty index also increases (-0.480) compared to the preferred specification (-0.516), meaning that occasional outages were an omitted variable with respect to poverty. Taking into account all outages intensities, the sole impact of total, serious and partial outages (-0.977) may affect households' connection twice as much as the poverty constraint does (-0.480).

Outages have *per se* a negative impact on subscription behavior. Supplying more reliable power is thus a prerequisite for gaining new customers, because too frequent outages observed by unconnected households alter their decision whether to buy the service. The expected benefit of acting on the supply side could actually be much greater than merely relaxing the budget constraint of the demand side. Enhancing reliability would most likely allow suppliers to gain middle-rich households as new customers. Assuming that those customers have a reasonably low likelihood of defaulting on their monthly payment, this result provides good confidence to accelerate the pace of connections in financially safe conditions, thereby reducing the marginal cost of the on-going grid extension.

The *Last Mile Connectivity* project should thus be advised to prioritize areas with middle-rich households : in these areas, the REA can expect the highest rates of new subscriptions, provided that the extended grid delivers reliable power.

If KPLC were to distribute more reliable power, the quality effect would *per se* increase the subscription rate, helping the company to significantly grow its customer base. According to the sample observations, 57% of under-grid households were connected in 2014. Had the electricity company eliminated outages from total to partial intensity, it would have gained an 18-percentage-point higher connection rate. Based on KPLC's 2014 customer number (2,7 million), the electricity distributor could have gained 486 000 new connections. If it had also been able to resolve *all* outages, the connection rate would have reached as high as 97%, meaning that KPLC could have gained up to 1,18 millions new customers. In those conditions, its customer base would have reached 3,8 million as early as 2014, which is almost 190 000 more customers than observed in 2015. With a fully-reliable service, the Kenyan electrical company would have gained almost 15 growth months : full reliability could allow the company to obtain more than one year of additional growth.

Increasing supply may not be enough to solve the reliability challenge because specific bottlenecks might exist within the grid, adding structural risks of outages to customer growth. However, most of projects intending to extend, enhance or build new lines or enhancement stations are facing a lack of funding [Zhou and Hankins, 2015] due to their cost and the public status of the grid's manager while strategic priority has been put on extending capacity.

Alternatively, the staggering cost of the under-utilized Kenyan grid could be addressed by increasing power reliability. Reaching the 7th Sustainable Development Goal may be achieved more rapidly by increasing the quality of the distributed power by enhancing or building step-up substations and upgrading transmission lines voltage.

## Références

- [Afrobarometer, 2014] Afrobarometer (2014). Afrobarometer.
- [Aguirre, 2014] Aguirre, J. (2014). Impact of Rural Electrification on Education : A Case Study from Peru. Technical report, Mimeo, Research Center, Universidad del Pacifico (Peru) and Department of Economics, Universidad de San Andrés (Argentina).
- [Alby et al., 2010] Alby, P., Dethier, J.-J., and Straub, S. (2010). Firms operating under infrastructure and credit constraints in developing countries : The case of power generators. *World Bank Policy Research Working Paper Series, Vol.*
- [Allcott et al., 2014] Allcott, H., Collar-Wexler, A., and O'Connell, S. D. (2014). How Do Electricity Shortages Affect Productivity? Evidence from India. *NBER*.

- [Andersen and Dalgaard, 2013] Andersen, T. B. and Dalgaard, C.-J. (2013). Power outages and economic growth in Africa. *Energy Economics*, 38 :19–23.
- [Angrist and Pischke, 2008] Angrist, J. D. and Pischke, J.-S. (2008). *Mostly harmless econometrics : An empiricist's companion*. Princeton university press.
- [Arellano, 1987] Arellano, M. (1987). Computing Robust Standard Errors for Within-Groups Estimators. *Oxford Bulletin of Economics and Statistics*, 49(4) :431–434.
- [Arnold et al., 2006] Arnold, J. M., Mattoo, A., and Narciso, G. (2006). Services inputs and firm productivity in Sub-Saharan Africa : Evidence from firm-level data. *World Bank Policy Research Working Paper*, (4048).
- [Arráiz and Calero, 2015] Arráiz, I. and Calero, C. (2015). From Candles to Light : The Impact of Rural Electrification. Technical report, Inter-American Development Bank.
- [Berthélemy, 2016] Berthélemy, J.-C. (2016). Les mini réseaux comme exemple d'application des thèses d'Elinor Ostrom sur la gouvernance polycentrique de la tragédie des communs. Paris.
- [Booyesen et al., 2008] Booyesen, F., van der Berg, S., Burger, R., Maltitz, M. v., and Rand, G. d. (2008). Using an Asset Index to Assess Trends in Poverty in Seven Sub-Saharan African Countries. *World Development*, 36(6) :1113–1130.
- [Chakravorty et al., 2014] Chakravorty, U., Pelli, M., and Ural Marchand, B. (2014). Does the quality of electricity matter? Evidence from rural India. *Journal of Economic Behavior & Organization*, 107 :228–247.
- [Chumo, 2015] Chumo, B. (2015). Notes by Dr. Ben Chumo, KENYA POWER Managing Director and Chief Executive Officer, during the press conference on implementation of the Last Mile Project on Tuesday 9th June, 2015.
- [Davis et al., 2015] Davis, Chmieliauskas, Dijkema, and Nikolic (2015). Enipedia Database.
- [Deaton, 2010] Deaton, A. (2010). Instruments, randomization, and learning about development. *Journal of economic literature*, 48(2) :424–455.
- [Diboma and Tamo Tatietse, 2013] Diboma, B. and Tamo Tatietse, T. (2013). Power interruption costs to industries in Cameroon. *Energy Policy*, 62 :582–592.
- [Dinkelmann, 2011] Dinkelmann, T. (2011). The Effects of Rural Electrification on Employment : New Evidence from South Africa. *American Economic Review*, 101(7) :3078–3108.
- [Fisher-Vanden et al., 2015] Fisher-Vanden, K., Mansur, E. T., and Wang, Q. J. (2015). Electricity shortages and firm productivity : Evidence from China's industrial firms. *Journal of Development Economics*, 114 :172–188.
- [Gonzalez-Eiras and Rossi, 2007] Gonzalez-Eiras, M. and Rossi, M. A. (2007). The impact of electricity sector privatization on public health.
- [Harish et al., 2014] Harish, S. M., Morgan, G. M., and Subrahmanian, E. (2014). When does unreliable grid supply become unacceptable policy? Costs of power supply and outages in rural India. *Energy Policy*, 68 :158–169.
- [Kaseke, 2011] Kaseke, N. (2011). *An estimate of the cost of electricity outages in Zimbabwe*. PhD thesis, Port Elisabeth.
- [Kezdi, 2003] Kezdi, G. (2003). Robust standard error estimation in fixed-effects panel models. *Available at SSRN 596988*.
- [Küfeoğlu and Lehtonen, 2015] Küfeoğlu, S. and Lehtonen, M. (2015). Comparison of different models for estimating the residential sector customer interruption costs. *Electric Power Systems Research*, 122 :50–55.
- [Khandker et al., 2014] Khandker, S. R., Samad, H. A., Ali, R., and Barnes, D. F. (2014). Who Benefits Most from Rural Electrification? Evidence in India. *The Energy Journal*, 35(2).

- [Kirubi et al., 2009] Kirubi, C., Jacobson, A., Kammen, D. M., and Mills, A. (2009). Community-Based Electric Micro-Grids Can Contribute to Rural Development : Evidence from Kenya. *World Development*, 37(7) :1208–1221.
- [Kjolle et al., 2008] Kjolle, G., Samdal, K., Singh, B., and Kvitastein, O. (2008). Customer Costs Related to Interruptions and Voltage Problems : Methodology and Results. *IEEE Transactions on Power Systems*, 23(3) :1030–1038.
- [KPLC, 2009] KPLC (2009). Annual Report. Technical report.
- [KPLC, 2014] KPLC (2014). Annual Report. Technical report.
- [KPLC, 2016] KPLC (2016). Causes of outages.
- [Lee et al., 2014] Lee, K., Brewer, E., Christiano, C., Meyo, F., Miguel, E., Podolsky, M., Rosa, J., and Wolfram, C. (2014). Barriers to Electrification for " Under Grid " Households in Rural Kenya. *NBER, Working Paper(20327)* :30.
- [Lipscomb et al., 2012] Lipscomb, M., Mobarak, A. M., and Barham, T. (2012). Development Effects of Electrification : Evidence from the Topographic Placement of Hydropower Plants in Brazil.
- [Martins, 2005] Martins, J. (2005). The impact of the use of energy sources on the quality of life of poor communities. *Social Indicators Research*, 72(3) :373–402.
- [Matungwa, 2014] Matungwa, B. (2014). *An analysis of PV solar electrification on rural livelihood transformation*. PhD thesis, University of Oslo.
- [Mensah, 2016] Mensah, J. T. (2016). Bring Back our Light : Power Outages and Industrial Performance in Sub-Saharan Africa.
- [Moulton, 1990] Moulton, B. R. (1990). An Illustration of a Pitfall in Estimating the Effects of Aggregate Variables on Micro Units. *The Review of Economics and Statistics*, 72(2) :334.
- [Nordman, 2014] Nordman, E. E. (2014). Energy transitions in Kenya’s tea sector : A wind energy assessment. *Renewable Energy*, 68 :505–514.
- [Oseni and Pollitt, 2015] Oseni, M. O. and Pollitt, M. G. (2015). A firm-level analysis of outage loss differentials and self-generation : Evidence from African business enterprises. *Energy Economics*, 52 :277–286.
- [Parsons Brinckerhoff, 2013] Parsons Brinckerhoff (2013). Kenya Distribution Master Plan. Technical report.
- [Pasha et al., 1989] Pasha, H. A., Ghaus, A., and Malik, S. (1989). The economic cost of power outages in the industrial sector of Pakistan. *Energy Economics*, 11(4) :301–318.
- [Praktiknjo et al., 2011] Praktiknjo, A. J., Hähnel, A., and Erdmann, G. (2011). Assessing energy supply security : Outage costs in private households. *Energy Policy*, 39(12) :7825–7833.
- [Reichl et al., 2013] Reichl, J., Schmidthaler, M., and Schneider, F. (2013). The value of supply security : The costs of power outages to Austrian households, firms and the public sector. *Energy Economics*, 36 :256–261.
- [Rud, 2012] Rud, J. P. (2012). Electricity provision and industrial development : Evidence from India. *Journal of Development Economics*, 97(2) :352–367.
- [Shah, 2007] Shah, T. (2007). Crop per drop of diesel? Energy squeeze on India’s smallholder irrigation. *Economic and Political Weekly*, pages 4002–4009.
- [Shah, 2009] Shah, T. (2009). *Taming the Anarchy : Groundwater Governance in South Asia*. 2009 edition.
- [Smith and Urpelainen, 2016] Smith, M. G. and Urpelainen, J. (2016). Rural electrification and groundwater pumps in India : Evidence from the 1982–1999 period. *Resource and Energy Economics*, 45 :31–45.

- [Squires, 2015] Squires, T. (2015). The Impact of Access to Electricity on Education : Evidence from Honduras.
- [Staiger and Stock, 1997] Staiger, D. and Stock, J. H. (1997). Instrumental Variables Regression with Weak Instruments. *Econometrica*, 65(3) :557.
- [Van de Walle et al., 2013] Van de Walle, D. P., Ravallion, M., Mendiratta, V., and Koolwal, G. B. (2013). Long-term impacts of household electrification in rural India. *World Bank Policy Research Working Paper*, (6527).
- [Williams, 2012] Williams, R. (2012). Using the margins command to estimate and interpret adjusted predictions and marginal effects. *The Stata Journal*, 12(2) :308–331.
- [Willis and Garrod, 1997] Willis, K. G. and Garrod, G. D. (1997). Electricity supply reliability : Estimating the value of lost load. *Energy Policy*, 25(1) :97–103.
- [Zachariadis and Poullikkas, 2012] Zachariadis, T. and Poullikkas, A. (2012). The costs of power outages : A case study from Cyprus. *Energy Policy*, 51 :630–641.
- [Zhou and Hankins, 2015] Zhou, P. and Hankins, M. (2015). Sustainable Energy for All Investment Prospectus for Kenya. Technical report.

## 8 Appendices

TABLE 9 – Growth of population and electrical capacity in Kenya

Years	Population (thousands)	KPLC's Customers (thousands)	Peak Load	Capacity
2009	39,269	1,267	1,044 MW	1,345 MW
2014	44,864	2,766	1,468 MW	1,885 MW
Growth rate	+14%	+218%	+41%	+40%

Sources : World Bank, [KPLC, 2009] [KPLC, 2014]

TABLE 10 – Main components of the MCA's first axis (poverty index)

Category	Coord1	Contrib1	Contrib/Mass	N	CO2
use mobile : Never	2,81	7,4%	7,9	180	0,63
roof : Thatch or grass	2,55	8,9%	6,5	263	0,68
mobile : No, don't own	2,39	10,5%	5,7	354	0,68
sanit : No latrine	2,28	1,4%	5,2	50	0,50
use mobile : A few times a month	2,24	1,5%	5,0	56	0,50
roof : Tiles	-2,60	2,4%	6,7	69	0,57
sanit : Inside the house	-2,63	10,1%	6,9	280	0,52
water : Inside the house	-2,80	10,6%	7,9	258	0,52
shelter : Flat in a block of flats	-3,00	5,2%	9,0	111	0,44
roof : Concrete	-3,14	2,3%	9,9	44	0,41
roof : missing	-3,43	2,0%	11,8	33	0,38



TABLE 11 – Qualitative assessment of outages' causes (but lightning)

Causes of outages	Potentially enough correlated with outages (through transmission lines)	Exclusion restriction at individual connection nodes	Relevance
Wind	Yes (strong zone effect)	Middle : possible correlation with fragile buildings : wind might destroy directly individual connection nodes	No (ER not met)
Rain	Yes (strong zone effect)	Middle (see wind)	No (ER not met)
Flood	Yes (strong zone effect)	No because : a/ flood might damage individual connections on a large area, with higher severity than wind or rain. b/ flood impairs access to buildings for technicians ; and repairing electricity of flooded building is dangerous.	No (ER clearly not met)
Contacts of animals	Low : most likely weak	Yes : very scarce cases in which animals would damage directly individual connection nodes .	Low (weakness)
Trees' growth	Low : most likely weak	Yes : one can reasonably assume that households are cutting trees before they will reach individual atmospheric lines or electrical boxes.	Low (weakness)
Collisions from vehicles	Middle. Roads are close to low-voltage lines : there might be more collisions in area where there is more lines and pylons. However, the event might be too scarce to avoid a weak instrument.	Yes : very low likelihood that collisions against individual connections would be a direct significant explanation for lower level of connections	Low (weakness)
Vandalism	Yes but too much time-varying.	No. Thieves are targeting copper cables, not individual features. But vandalism is also correlated with poverty, not only with outages	No (endogenous to poverty)
Age of features	Yes. Age implies an increasing likelihood of failures. But specific aging laws in electricity engineering => age is not external to outages .	Yes : there is no such a policy in Kenya with instructions to avoid connections in areas with too old features. On the contrary, the Last Mile Connectivity project aims to target those area [Chumo, 2015].	No : time varying ; i.e., not randomly exogenous

TABLE 12 – Qualitative assessment of lightning as an instrument for outages

Causes of outages	Potentially enough correlated with outages (through transmission lines)	Exclusion restriction at individual connection nodes	Relevance
Lightning	<p>Yes.</p> <p>a/ Lightning is attracted by the height of metallic pylons</p> <p>b/ There is a strong zone effect. A local over-voltage caused by a lightning strike will let automated circuit-breakers to cut the line, avoiding over-voltage propagation toward next grid sections. Then, the local shortage creates a sudden barrier to power supply in sections where it occurred, carrying forward electrical flow to next grid sections, eventually generating an over-load that can itself trigger a new cut from automated balancing. A local outage might thus trigger a wider blackout, due to a chain-reaction at light-speed, making impossible any human intervention like deriving the excess flow or reducing power generation. To sum-up, automated balancing after a lightning strike on local point into the electrical grid might trigger a reverse tide effect, spreading the initial outage on large areas</p>	<p>Yes.</p> <p>Lightning might strike directly individual external features of connection (boxes, cases, final atmospheric cables). But the probability of a strike on individual nodes (small, numerous and dispersed across space) might be small in front of the probability of a strike on high metallic grid features (pylons, HV-lines, transformers or LV-lines).</p> <p>Partial correlation of lightning with a lower number of connections might thus be small enough in front of correlation of lightning with outages</p>	Yes (meets exclusion restriction assumption and might be enough correlated with outages)

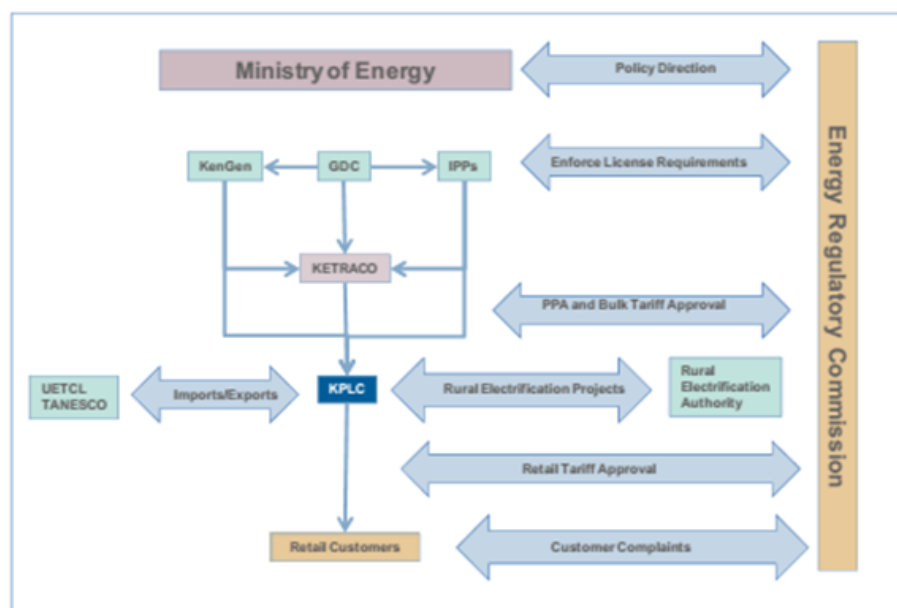
TABLE 13 – Classes of models

Models were organized in four classes of equations, introducing Weighted Severity Index (*bSev*), control by poverty index (*cSev*) and interaction of both indexes (*iSev*). An extended definition of severity defines the last class of equations (*eSev*).

The three first classes gather 12 models and were diagnosed together, with the objective to qualify the best specification of the impact of outages severity on the likelihood of connection. The last class was used to estimate an extended model which supports simulations.

Class denomination	Set of tested indicators
bSev	CO(p)
cSev	CO(p) + control by the poverty index
iSev	CO(p) + control + interaction
eSev	CO(p) + control + interaction + outages of next severity level

FIGURE 8 – Main actors of the electricity sector in Kenya



Source : [Zhou and Hankins, 2015]

TABLE 14 – Selection process of OLS model

For OLS models, the backward-decision criteria were lowest AIC, then lowest p-value of a Student test

Equation	(1) Severity	(2) SE	(3) p-val.	(4) Adj.R2	(5) AIC	(6) N	(7) Clusters
bSev1r	-0.413	0.101	0.000	2.07	2,354	1,669	90
bSev2r	-0.471	0.072	0.000	5.95	2,286	1,669	90
bSev3r	-0.515	0.068	0.000	8.40	2,242	1,669	90
bSev4r	-0.591	0.165	0.001	5.05	2,302	1,669	90
cSev1r	-0.142	0.103	0.171	20.18	2,014	1,669	90
cSev2r	-0.273	0.077	0.001	21.83	1,979	1,669	90
cSev3r	-0.313	0.069	0.000	22.82	1,957	1,669	90
cSev4r	-0.339	0.131	0.011	21.54	1,985	1,669	90
iSev1r	-0.419	0.117	0.001	21.73	1,982	1,669	90
iSev2r	-0.361	0.077	0.000	22.64	1,962	1,669	90
iSev3r	-0.362	0.070	0.000	23.33	1,947	1,669	90
iSev4r	-0.357	0.138	0.011	21.61	1,984	1,669	90
eSev1r	-0.386	0.098	0.000	23.29	1,949	1,669	90
eSev2r	-0.377	0.079	0.000	23.45	1,946	1,669	90
eSev3r	-0.465	0.126	0.000	23.54	1,944	1,669	90

Linear regression of connection, Variance : Robust cluster by districts.

The table displays only the estimates of the severity indicator

b : simple OLS of severity. c : adds poverty index as control

i : adds the interaction of severity and poverty

e : extension with the next severity level (not to be included in the identification diagnosis)

TABLE 15 – Number of clusters and accuracy of estimates

Clustered robust standard error converges toward the true standard error when the number of groups tends to infinity [Arellano, 1987]. In practice, a minimal number of clusters ensures such a convergence. It has been estimated between 42 by [Angrist and Pischke, 2008] and 50 by [Kezdi, 2003] who has tabulated the bias with Monte-Carlo simulations. Bias is slightly reduced close to zero as soon as the number of clusters is over 50, while on the opposite, a too small number of groups yields over-estimated standard errors.

In this article, all estimations have been clustered with 90 districts, a sufficient number to ensure convergence of standard error toward its true value, yielding thus accurate estimates for further inference.

TABLE 16 – Connection's likelihood (LPM)

	(1)	(2)	(3)
	Base	Control	Interaction
	b/beta/se	b/beta/se	b/beta/se
Large severity outages	-0.515***	-0.313***	-0.362***
			-0.205
	(0.068)	(0.069)	(0.070)
Poverty		-0.616***	-0.735***
			-0.473
		(0.045)	(0.070)
Large severity outages x Poverty			0.512**
			(0.184)
Constant	0.713***	0.636***	0.637***
	(0.043)	(0.036)	(0.036)
Observations	1669	1669	1669
Clusters	90	90	90
AIC	2242.3	1957.5	1947.4
Adjusted R2			0.23

LPM model, LHS : connection.

Standardized coefficient are shown only for the interaction model

Standard errors are in parenthesis. Variance : Robust cluster by DISTRICT.

\*  $p < 0.05$ , \*\*  $p < 0.01$ , \*\*\*  $p < 0.001$

TABLE 17 – Selection process of 2SLS model

The following set of backward-ordered tests has been applied to diagnose the 2SLS equations.

Are instruments strong enough ?	Stock-Yogo < 30 F > 6 with p < 1% (5)
Are estimates of outages significant, even if the instruments were weak ?	Anderson-Rubin test (p < 1%)
Is the model correctly identified ?	Endogeneity test (p < 5%) Under-identification test (p < 5%) Over-identification Hansen test (p > 10%)
Does instrumentation bring a significant difference in estimates ?	Hausman test (p < 5%)

Using a Monte-Carlo simulation for 2SLS method, [Staiger and Stock, 1997] have tabulated the bias between asymptotic value and finite distance estimation : it converges more or less the same for an F-value of 10 with one instrument than an F-value of 5 with four instruments. With three instruments, the usual rules-of-thumb (10) can thus be relaxed to 6, while keeping the objective of a p-value below 1%.

Model	Endog(chi2)	(p)	F First	(p)	Under id(p)	Hansen(p)	SY :KP	A-R(p)	Haus.(p)	N	Clus.
bSev1iv	0.0	0.876	0.1	0.883	0.875	0.077	100	0.000	0.647	1,669	90
bSev2iv	13.4	0.000	2.5	0.086	0.157	0.504	100	0.000	0.090	1,669	90
bSev3iv	9.4	0.002	11.2	0.000	0.007	0.218	20	0.000	0.012	1,669	90
bSev4iv	12.5	0.000	9.7	0.000	0.003	0.834	20	0.000	0.003	1,669	90
cSev1iv	7.6	0.006	0.2	0.820	0.818	0.541	100	0.000	0.824	1,669	90
cSev2iv	14.0	0.000	2.0	0.143	0.206	0.478	100	0.000	0.205	1,669	90
cSev3iv	10.8	0.001	10.0	0.000	0.007	0.187	20	0.000	0.018	1,669	90
cSev4iv	13.5	0.000	8.2	0.001	0.005	0.738	25	0.000	0.015	1,669	90
iSev1iv	0.3	0.586	2.3	0.043	0.267	0.005	100	0.000	0.830	1,669	90
iSev2iv	1.8	0.184	5.3	0.000	0.023	0.019	100	0.000	0.115	1,669	90
iSev3iv	5.8	0.016	6.7	0.000	0.004	0.092	25	0.000	0.020	1,669	90
iSev4iv	12.3	0.000	3.4	0.005	0.018	0.376	100	0.000	0.041	1,669	90
eSev1iv	0.1	0.765	2.4	0.034	0.345	0.008	100	0.000	0.998	1,669	90
eSev2iv	2.3	0.127	5.9	0.000	0.024	0.031	100	0.000	0.139	1,669	90
eSev3iv	5.9	0.015	5.4	0.000	0.001	0.155	25	0.000	0.057	1,669	90

IV (2SLS) estimation of connection, Variance : robust cluster by districts.

The table displays only the estimates of the severity indicator

b : simple OLS of severity. c : adds poverty index as control

i : adds the interaction of severity and poverty

e : extension with the next severity level (not to be included in the identification diagnosis)

Model *bSev3iv* yields the best estimation, with Large Severity Index providing the best candidate to infer outages impact on the level of connections. However, this equation includes only the outages factor, although the study aims to control for poverty and its interaction with reliability uncertainty. One thus switches to another equation, provided that vector of tests still holds.

Introducing poverty index, the model *cSev3iv* yields the same Stock-Yogo threshold (20) as the best specification above, whereas all other tests remain very close to those of *bSev3iv*. Then, introducing interaction term, model *iSev3iv* yields a weaker though acceptable Stock-Yogo threshold (25), with lower F in first-stage (6.7), which is only due to a larger number of instrumented variables (2). However, this F-value remains above the targeted threshold (6) with an acceptable p-value (0.000) (5). Anderson-Rubin test also ensures that the model provides estimates that would remain robust if instruments were weak. All second-order tests remain acceptable. Large Severity specification with control and interaction (*iSev3iv*) is thus retained as the preferred instrumented estimation in 2LS framework.

TABLE 18 – Connection's likelihood (2SLS, 3 instruments)

	Point estimates	Standardized coef.
Large severity outages	-0.806*** (0.167)	-0.456
Large severity outages x Poverty	0.479 (0.330)	
Poverty	-0.615*** (0.103)	-0.396
Constant	0.762*** (0.061)	
Observations	1669	
Clusters	90	
Kleibergen-Paap Wald rank F	5.97	
Anderson-Rubin	59.9	
p-value for Anderson-Rubin	0.000	

LHS : connection

IV (2SLS) estimation SE in parentheses.

Variance : Robust robust cluster by DISTRICT

Instrumented variables : Partial outages Partial outages x poverty

Excluded Instruments :

Lightning, Lightning in neighbors, Weigh. dist. to closest plant,

Poverty interacted with all three above.

Seuils Stock-Yogo : 15.72, 9.48, 6.08, 4.7

TABLE 19 – Selection process of probit model

Equation	(1) Severity	(2) SE	(3) p-val	(4) AIC	(5) T1 err.	(6) Specif.	(7) ROC	(8) C/-	(9) N	(10) Clus.
bSev1	-1.088	0.286	0.000	2,245	0.000	100.0	52	57.4	1,669	90
bSev2	-1.268	0.222	0.000	2,179	0.000	100.0	59	57.4	1,669	90
bSev3	-1.375	0.206	0.000	2,137	0.000	100.0	64	57.4	1,669	90
bSev4	-1.567	0.475	0.001	2,194	6.188	93.8	65	56.7	1,669	90
cSev1	-0.243	0.315	0.440	1,870	1.125	98.9	79	48.6	1,669	90
cSev2	-0.709	0.244	0.004	1,843	1.266	98.7	79	48.5	1,669	90
cSev3	-0.821	0.215	0.000	1,827	1.125	98.9	79	48.6	1,669	90
cSev4	-0.957	0.424	0.024	1,844	1.969	98.0	79	47.8	1,669	90
iSev1	-1.252	0.371	0.001	1,824	1.125	98.9	78	48.5	1,669	90
iSev2	-1.091	0.250	0.000	1,814	1.266	98.7	79	48.3	1,669	90
iSev3	-1.108	0.231	0.000	1,800	2.110	97.9	79	48.1	1,669	90
iSev4	-0.960	0.429	0.025	1,845	3.657	96.3	79	47.8	1,669	90
eSev1	-1.136	0.319	0.000	1,798	1.125	98.9	79	48.3	1,669	90
eSev2	-1.133	0.254	0.000	1,803	1.125	98.9	79	48.4	1,669	90
eSev3	-1.378	0.427	0.001	1,798	3.094	96.9	79	47.7	1,669	90

Probit regression of connection, Variance : cluster by districts.

The table displays only the estimates of the severity indicator

b : simple OLS of severity. c : adds poverty index as control

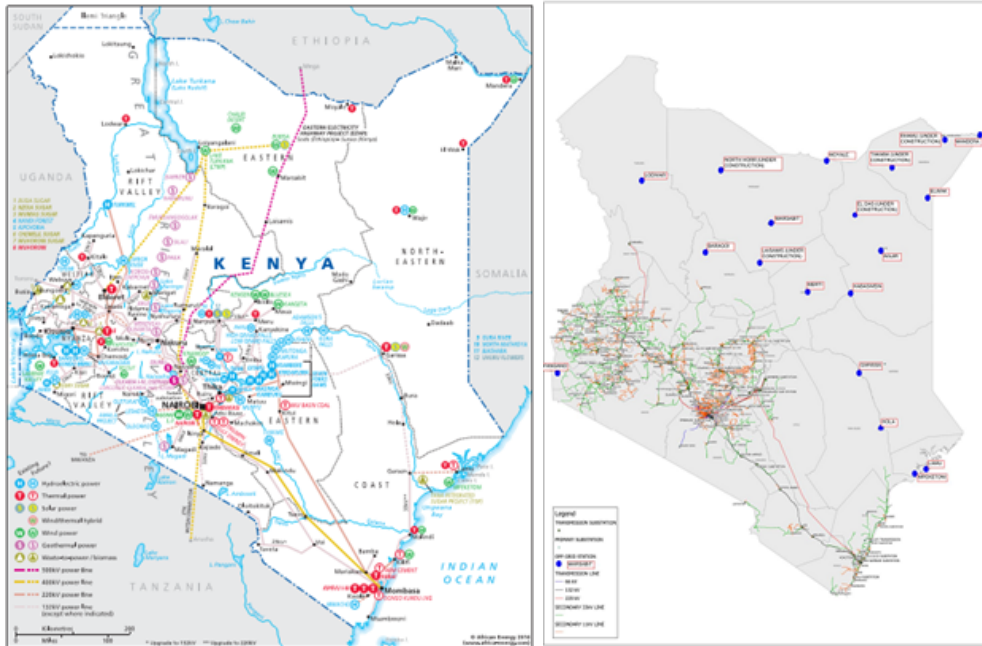
i : adds the interaction of severity and poverty

e : extension with the next severity level (not to be included in the identification diagnosis)

With following backward-chain of tests, the best specification is achieved with model *iSev3*

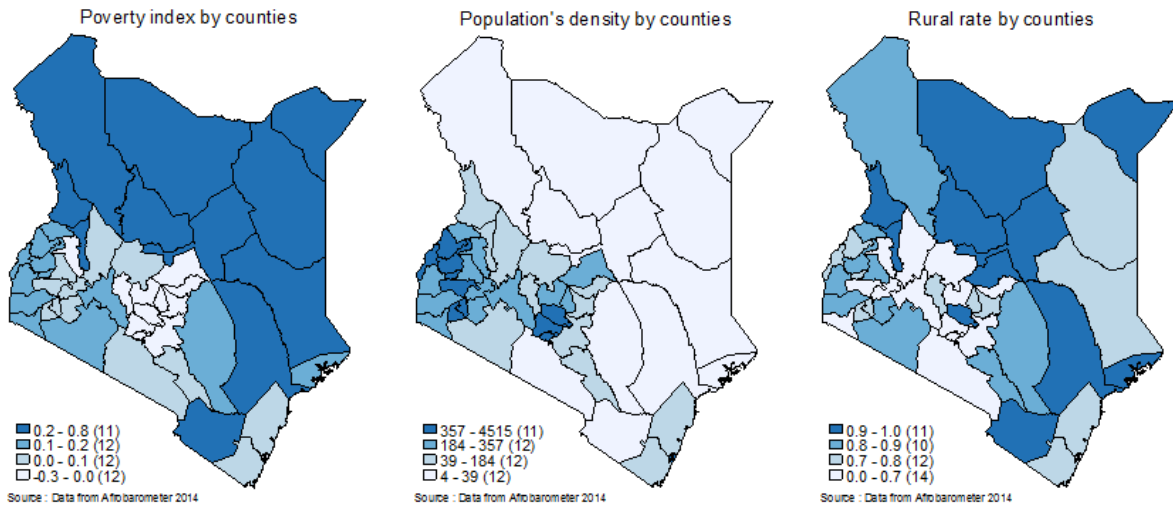
Best fit	AIC ( <i>column 4</i> )	
Risk to predict a connection whereas household is not connected	Lowest type I error ( <i>column 5</i> )	
Exact prediction of unconnected households	Highest specificity ( <i>column 6</i> )	Proportion of predicted unconnected households who are effectively unconnected
Synthetic measurement of probit's discriminatory accuracy	Highest area under ROC curve ( <i>column 7</i> )	Provides a global assessment of inference relevance, independent of cut-off setting
Significance of estimate	Smallest p-value of outages severity index ( <i>column 3</i> )	At this stage of chained tests, the assessed model should be discriminatory enough : one thus expect severity estimate ( <i>column 1</i> ) to be significant. If this test fails, one switches to the second-best specification.
Proportion of truly connected households among predicted unconnected households	Lowest specification error of unconnected ( <i>column 8</i> : « C /- »)	This criteria provides an expected approximation of operational cost of the model, if the model were used on the field to detect unconnected households. Each error case would actually means an unefficient cost of inquiry, prospection and commercial effort.

FIGURE 9 – Kenya's electrical grid



Left : generators and transmission lines (>132 Kv) Right : distribution lines [Parsons Brinckerhoff, 2013]

FIGURE 10 – Poverty, density and rural population by counties in Kenya



Source : [Afrobarometer, 2014]



TABLE 20 – Selection process of IVprobit model (3 instruments)

Following diagnosis table exhibits the main tests of instrumentation that comes from linear setting and are applied on an probit estimation `-ivprobit-` procedure. The table checks *ex-post* whether probit model still holds when the estimation is upgraded with linear instrumentation. AIC and ROC are also verified, to ensure that the discriminatory capacity of probit holds as well.

The backward-chain of diagnosis criteria below has been applied for model selection.

Is explanatory variable endogenous ?	Endogeneity Wald test < 1% ( <i>column 2</i> )
Does instrumentation bring significant different estimates ?	Forced Hausman test < 5% ( <i>column 4</i> )
Global quality of probit model	Global Wald test < 1% ( <i>column 6</i> )
Is the first instrument significant ?	Z-test of estimate of the first instrument in first-stage < 1% ( <i>column 3</i> )
Is probit model discriminant enough ?	ROC among greatest values ( <i>column 8</i> )
Does model fit with observed values ?	AIC among smallest values ( <i>column 7</i> )

(1) Equat.	(2) Endog(p)	(3) First(p)	(4) Haus.(p)	(5) Coef.(p)	(6) Wald(p)	(7) AIC	(8) ROC	(9) T1 Err.	(10) Specif.	(11) C/-	(12) N	(13) Clus.
bSev1	0.188	0.588	0.140	0.045	0.045	796	51.7	0.0	100.0	57.4	1,669	90
bSev2	0.000	0.415	0.000	0.000	0.000	1,810	59.1	37.4	62.6	57.5	1,669	90
bSev3	0.000	0.127	0.000	0.000	0.000	1,948	64.0	23.8	76.2	54.5	1,669	90
bSev4	0.000	0.723	0.000	0.000	0.000	969	65.4	18.0	82.0	53.5	1,669	90
cSev1	0.597	0.626	0.842	0.559	0.000	441	78.3	1.1	98.9	48.5	1,669	90
cSev2	0.015	0.433	0.037	0.001	0.000	1,510	76.7	2.8	97.2	47.6	1,669	90
cSev3	0.000	0.128	0.000	0.000	0.000	1,645	77.3	13.1	86.9	45.8	1,669	90
cSev4	0.000	0.856	0.000	0.000	0.000	657	74.9	14.8	85.2	48.1	1,669	90
iSev1	0.314	0.666	1.000	0.137	0.000	-306	76.7	1.5	98.5	48.7	1,669	90
iSev2	0.002	0.421	1.000	0.000	0.000	1,200	76.0	14.1	85.9	46.2	1,669	90
iSev3	0.000	0.090	0.012	0.000	0.000	1,451	77.0	13.5	86.5	45.5	1,669	90
iSev4	0.000	0.854	0.085	0.000	0.000	587	74.7	16.2	83.8	47.2	1,669	90
eSev1	0.474	0.671	1.000	0.276	0.000	-321	78.1	1.8	98.2	48.6	1,669	90
eSev2	0.001	0.285	0.515	0.000	0.000	1,147	77.0	10.0	90.0	45.5	1,669	90
eSev3	0.000	0.363	0.151	0.000	0.000	321	77.8	15.2	84.8	45.4	1,669	90

Probit model with endogenous regressors of connection CO3, Variance : cluster by districts.

The table displays only the estimates of the severity indicator

b : simple OLS of severity. c : adds poverty index as control

i : adds the interaction of severity and poverty

e : extension with the next severity level (not to be included in the identification diagnosis)

Using Large Severity Index with control and interaction, model (*iSev3*) meets all ordered criteria but AIC (1451). Its ROC is among the best ones (77.0%), proving that Large Severity Index still yields a strong model with respect to the discriminatory ability whereas instrumentation has been applied to the probit.

The model also yields low Type I error (false classification of unconnected : 13.5%, *column 9*), acceptable recognition of unconnected (specificity : 86.5%, *column 10*) and smallest specification error (rate of connected households among prediction of unconnected : 45.5%, *column 11*).

However, along the chain of tests the p-value of lightning is only significant at the 9% level (*column 3*) what is not enough for the main instrument to achieve its purpose. Switching to lowest AIC (-306 in *iSev1ivp*) would provide inconsistent instrumentation with respect to endogeneity test (p=0.314), p-value of lightning (p=0.666) and Hausman test (p=1.000). Switching to next best AIC (587 in *iSev4ivp*) would also yield a poor instrumentation (p-value of lightning : 0.854 and Hausman : 8.5%). The risk that estimates of instruments would be biased is too high for any specification, generating a too high risk that endogenous issues would not be properly neutralized in the reduced form.

TABLE 21 – Connection's likelihood (IVPROBIT with 3 instruments)

	Point estimates	Robust SE	Z	p> Z
Reduced form				
Large Severity outages	-2.457	0.394	-6.24	0.000
Large Severity outages x Poverty	4.506	0.750	6.01	0.000
Poverty	-3.084	0.333	-9.27	0.000
Constant	0.772	0.147	5.26	0.000
First-Stage				
Large Severity outages x Poverty	1.061	0.198	5.37	0.000
Poverty	-0.106	0.061	-1.74	0.082
Lightning intensity	0.017	0.010	1.69	0.090
Lightning in neighbor	-0.011	0.011	-1.01	0.313
Weighted distance to closest plant	0.011	0.003	3.83	0.000
Lightning intensity x Poverty	-0.030	0.020	-1.50	0.134
Lightning in neighbor x Poverty	0.034	0.022	1.56	0.118
Weighted distance to closest plant x Poverty	-0.007	0.005	-1.43	0.153
Constant	0.095	0.033	2.86	0.004
Observations	1669			
Clusters	90			
AIC	1451.1			
Wald Chi2	242.2			
p-value (Wald)	0.000			

Probit model with endogenous regressors : ivprobit of connection

Instrumented variables : Partial outages, Partial outages x poverty

Excluded Instruments : Lightning, Wghtd. dist. to closest plant, Poverty interacted with both

Variance : Robust cluster by DISTRICT

TABLE 22 – Selection process of IVProbit model (2 instruments)

(1) Equat.	(2) Endog(p)	(3) First(p)	(4) Haus.(p)	(5) Coef.(p)	(6) Wald(p)	(7) AIC	(8) ROC	(9) T1 Err.	(10) Specif.	(11) C/-	(12) N	(13) Clus.
bSev1	0.169	0.781	0.104	0.030	0.030	801	51.7	0.0	100.0	57.4	1,669	90
bSev2	0.000	0.219	0.000	0.000	0.000	1,814	59.1	37.4	62.6	57.5	1,669	90
bSev3	0.000	0.005	0.000	0.000	0.000	1,956	64.0	25.5	74.5	52.6	1,669	90
bSev4	0.000	0.000	0.000	0.000	0.000	969	65.4	18.0	82.0	53.5	1,669	90
cSev1	0.490	0.364	0.724	0.455	0.000	451	78.0	1.1	98.9	48.5	1,669	90
cSev2	0.012	0.373	0.026	0.000	0.000	1,516	76.6	3.0	97.0	47.6	1,669	90
cSev3	0.001	0.006	0.001	0.000	0.000	1,654	77.1	13.6	86.4	45.8	1,669	90
cSev4	0.000	0.000	0.000	0.000	0.000	658	74.9	14.6	85.4	48.1	1,669	90
iSev1	0.282	0.608	1.000	0.102	0.000	-300	76.5	1.4	98.6	48.6	1,669	90
iSev2	0.004	0.291	0.887	0.000	0.000	1,203	75.8	14.2	85.8	45.7	1,669	90
iSev3	0.001	0.006	0.017	0.000	0.000	1,467	76.8	14.1	85.9	45.2	1,669	90
iSev4	0.000	0.001	0.123	0.000	0.000	586	74.8	16.2	83.8	47.2	1,669	90
eSev1	0.400	0.460	1.000	0.212	0.000	-313	77.8	1.8	98.2	48.8	1,669	90
eSev2	0.002	0.191	0.232	0.000	0.000	1,153	76.9	12.4	87.6	45.3	1,669	90
eSev3	0.001	0.000	0.089	0.000	0.000	318	77.7	15.2	84.8	45.3	1,669	90

Probit model with endogenous regressors of connection CO3, Variance : cluster by districts.

The table displays only the estimates of the severity indicator

b : simple OLS of severity. c : adds poverty index as control

i : adds the interaction of severity and poverty. e : adds the next severity level

TABLE 23 – Marginal effects - Control by shelter type (IVPROBIT)

	Marginal effect	
	Preferred	Extended
Large Severity outages	-0.673*** (0.102)	-0.620*** (0.096)
Poverty index	-0.516*** (0.081)	-0.433*** (0.072)
Traditional house / hut		-0.113* (0.045)
Temporary structure / shack		-0.023 (0.073)
Flat in a block of flats		0.240** (0.073)
Single room in a larger dwelling structure or backyard		0.108* (0.049)
Observations	1669	1668

Average marginal effects : margins of connection

Instrumented variables : Partial outages, Partial outages x poverty

Excluded Instruments : Lightning, Wghtd. dist. to closest plant, Poverty interacted with both

Variance : Delta-method delta by , SE in parenthesis

\*  $p < 0.05$ , \*\*  $p < 0.01$ , \*\*\*  $p < 0.001$

TABLE 24 – Initial setting of margins analysis

In probit model, coefficients measure the change in Z-score for one unit change in predictor, not directly the change in estimated probability. Since this model is not linear, its coefficients are not equal to the partial derivative of dependent variable, as they are in LPM. However, Stata provides a powerful analytic feature `-margins-` which allows to compute directly marginal effect of each predictor on dependent variable, also taking into account interactions. By default, average values of variables in sample (*Table 1*) are the referral values for margins computation at mean of other variables.

*Table A.25* checks that the global prediction (57.3%) equals the average proportion of connected household in estimation sample. Adjusting for means of predictors in sample yields a very close estimate (56.6%). The margins analysis has thus been based on the deviation from this referral prediction.

Definitions and acronyms :

Adjusted Average Prediction (AAP) : adjusted prediction, taking into account interaction terms.

Adjusted Prediction at Means (APM) : adjusted prediction as above, computed at means of other variables in sample.

Average Marginal Effect (AM) : marginal effect computed with observed values of variables in sample.

Marginal Effect (ME) : marginal effect at different referral level of outages and poverty (at means, median or deciles).

TABLE 25 – Predictions of third severity's outages(IVPROBIT)

	Adjusted Average Prediction	Adjusted Prediction at Means
Constant	0.573*** (0.024)	0.566*** (0.034)
Observations	1669	1669

Adjusted predictions : margins of connection

Instrumented variables : Partial outages, Partial outages x poverty

Excluded Instruments : Lightning, Wghtd. dist. to closest plant, Poverty interacted with both

Variance : Delta-method delta, SE in parenthesis

\*  $p < 0.05$ , \*\*  $p < 0.01$ , \*\*\*  $p < 0.001$

TABLE 26 – Extended model for global simulation

As pointed out in Section V, there might be an additional effect of less severe outages (level 4 : occasional), which is diagnosed by extending the preferred specification with equation below :

$$Connection_i = \alpha_0 + \alpha_1.CO_d(3) + \alpha_2.poverty_i + \alpha_3.CO_d(3).poverty_i + roi_d(4) + u_i$$

Different strategies have been unsuccessfully tried to instrument variable  $roi(4)$  in the 2SLS estimation, but the backward-decision criteria failed (result not shown). An explanation could be the inability to affect three instruments separately to endogenous variables. Therefore, the next level of outages is introduced as a control in preferred specification, defining the “extension” models’ class *e*. Third level of severity remains the most relevant with respect to robustness of instrumentation : equation *eSev3iv* passes successfully all tests (*Table A.17*).

TABLE 27 – Marginal effects of extended outages (Extended IVPROBIT)

	Marginal effect		Point estimates	
	Prefered	Extended	Prefered	Extended
Large severity outages	-0.673*** (0.102)	-0.977*** (0.169)	-2.573*** (0.458)	-3.637*** (0.761)
Poverty	-0.516*** (0.081)	-0.480*** (0.088)	-3.026*** (0.331)	-2.755*** (0.363)
Occasional outages		-0.613*** (0.180)		-2.217** (0.735)
Large severity outages x Poverty			4.581*** (0.786)	3.706*** (0.716)
Constant			0.797*** (0.153)	2.349*** (0.653)
Observations	1669	1669	1669	1669
Clusters			90	90
AIC			1466.5	318.3
Wald Chi2			250.6	239.5
p-value (Wald)			0.000	0.000

Average marginal effects : margins of connection

Instrumented variables : Partial outages, Partial outages x poverty

Excluded Instruments : Lightning, Wghtd. dist. to closest plant, Poverty interacted with both

Variance : Delta-method delta by , SE in parenthesis

\*  $p < 0.05$ , \*\*  $p < 0.01$ , \*\*\*  $p < 0.001$