

Plate 22. Tell Sabi Abyad and Tell Seker al-Aheimar dendrograms. Tell Sabi Abyad: cluster analysis of 152 samples, calculated on 17 components. Tell Seker al-Aheimar: cluster analysis of all the analysed samples, calculated on 17 components (image V. Thirion-Merte; AvAr, Maison de l'Orient et de la Méditerranée).

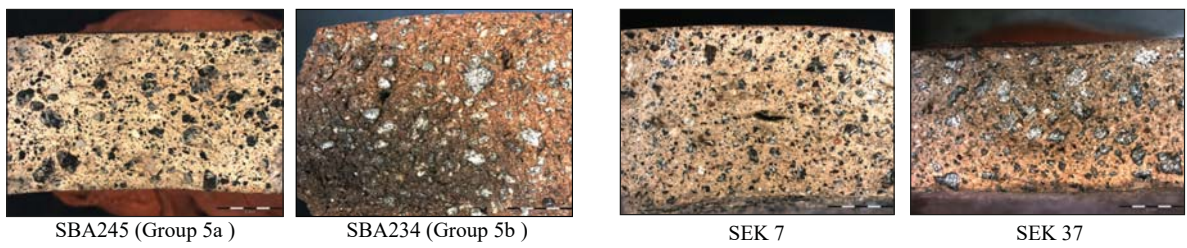


Plate 23.1. Tell Sabi Abyad. Fabric of samples characteristic of compositional sub-groups 5a (SBA 245, left) and 5b (SBA234, right) (image A. Bernet; ArAr, Maison de l’Orient et de la Méditerranée).

Plate 23.2. Tell Seker al-Aheimar. Fabric of samples characteristic of Basalt Tempered Ware: SEK 7 (left), SEK 35 (right) (image A. Bernet; ArAr, Maison de l’Orient et de la Méditerranée).



Plate 23.3. Similarity between the painted Early Mineral Ware from Tell Sabi Abyad (a) and the painted Basalt Tempered Ware from Tell Seker al-Aheimar (b, c) (not to scale) (no. a: Pl. 4.51: 2) (image A. Bernet; ArAr, Maison de l’Orient et de la Méditerranée).

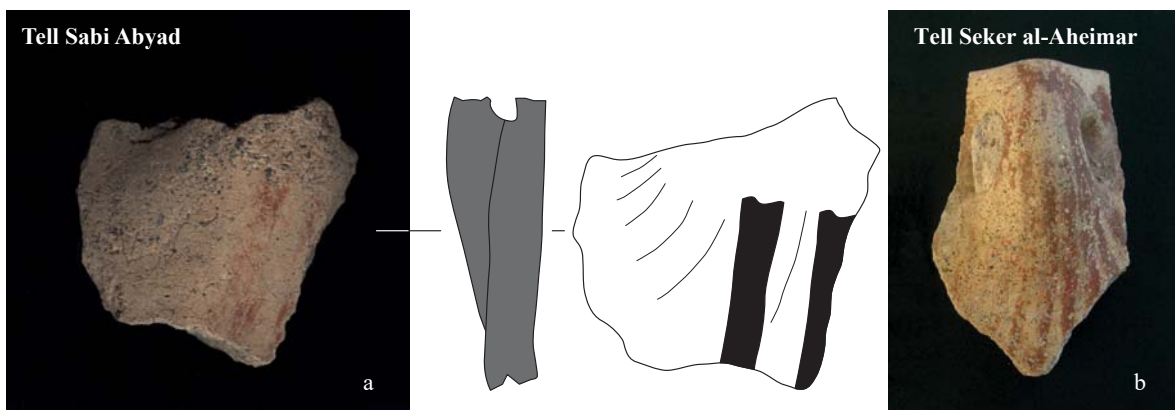


Plate 23.4. Two very similar painted lugs from Tell Sabi Abyad (Early Mineral Ware) (a) and Tell Seker al-Aheimar (Basalt Tempered Ware) (b) (not to scale) (no. a: Fig. 4.114: 11) (image M. Le Mièrre; Maison de l’Orient et de la Méditerranée).

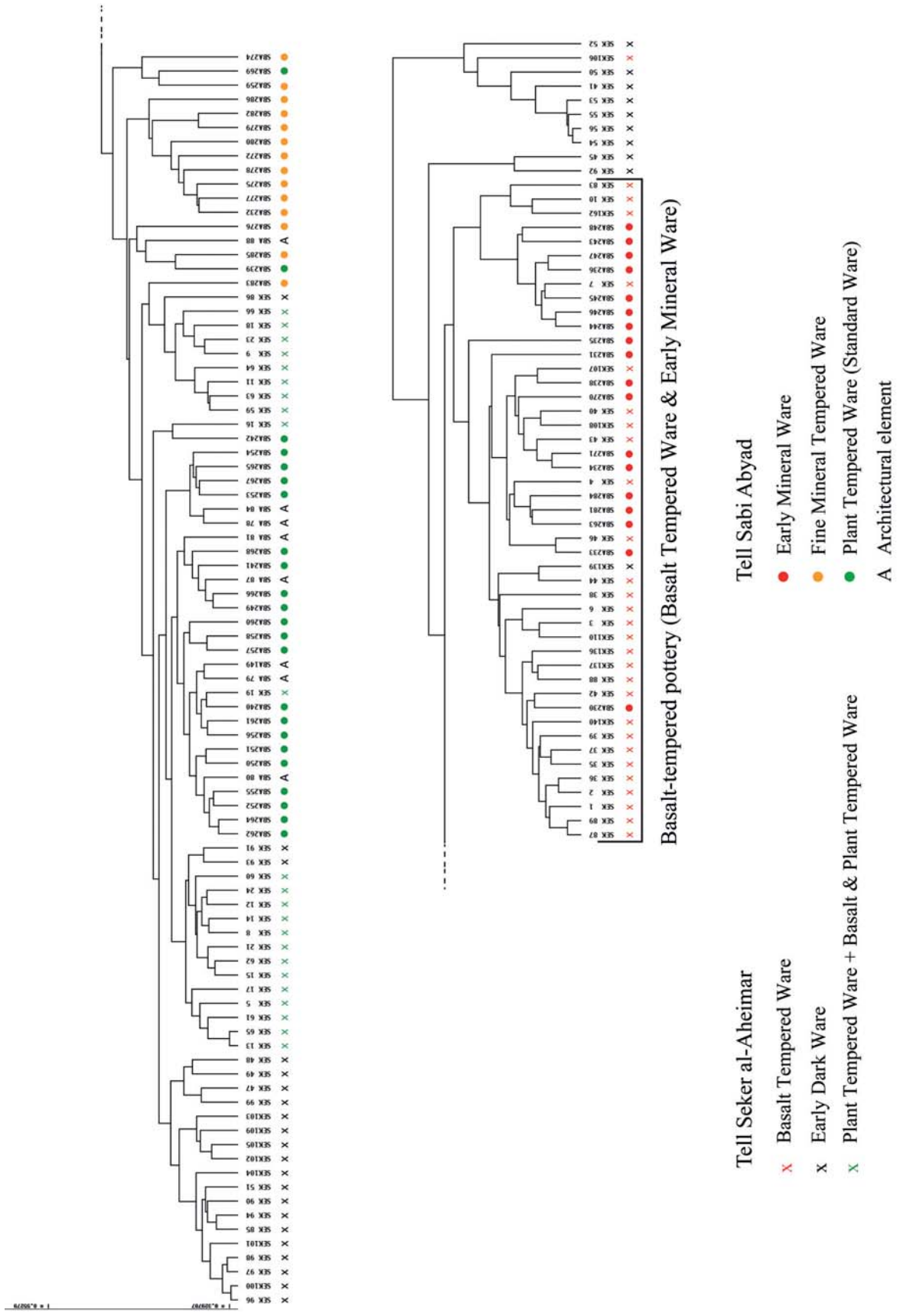


Plate 24 Dendrogram of cluster analysis of samples of the earliest periods of Tell Sabi Abyad (Initial Pottery Neolithic and Early Pottery Neolithic stages) and Tell Seker al-Aheimar (Pre-Proto-Hassuna period), calculated on 17 components (image V. Thirion-Merle; ArAr; Maison de l'Orient et de la Méditerranée).