



**HAL**  
open science

## SINOPOLIS

Gregory Lee

► **To cite this version:**

Gregory Lee. SINOPOLIS. SINOPOLIS: "Chineseness" and the Modern Chinese City Plenary Lecture, Sep 2008, Northampton, United Kingdom. halshs-00322907

**HAL Id: halshs-00322907**

**<https://shs.hal.science/halshs-00322907>**

Submitted on 20 Sep 2008

**HAL** is a multi-disciplinary open access archive for the deposit and dissemination of scientific research documents, whether they are published or not. The documents may come from teaching and research institutions in France or abroad, or from public or private research centers.

L'archive ouverte pluridisciplinaire **HAL**, est destinée au dépôt et à la diffusion de documents scientifiques de niveau recherche, publiés ou non, émanant des établissements d'enseignement et de recherche français ou étrangers, des laboratoires publics ou privés.

# SINOPOLIS "Chineseness" and the Modern Chinese City Gregory Lee

**Institute for Transtextual and Transcultural Studies  
Université de Lyon, France**

[www.transtexts.net](http://www.transtexts.net)

[www.gregorylee.net](http://www.gregorylee.net)

*Trantext()esTranscultures*

[www.transtexts.net](http://www.transtexts.net)

**Photographs are either taken Gregory Lee (1979 -2008)  
or are in the public domain**



# Street scene in pre-modern Beijing



# Colonial concessions China

## Peking





# Tients'in - Tianjin







# Shanghai







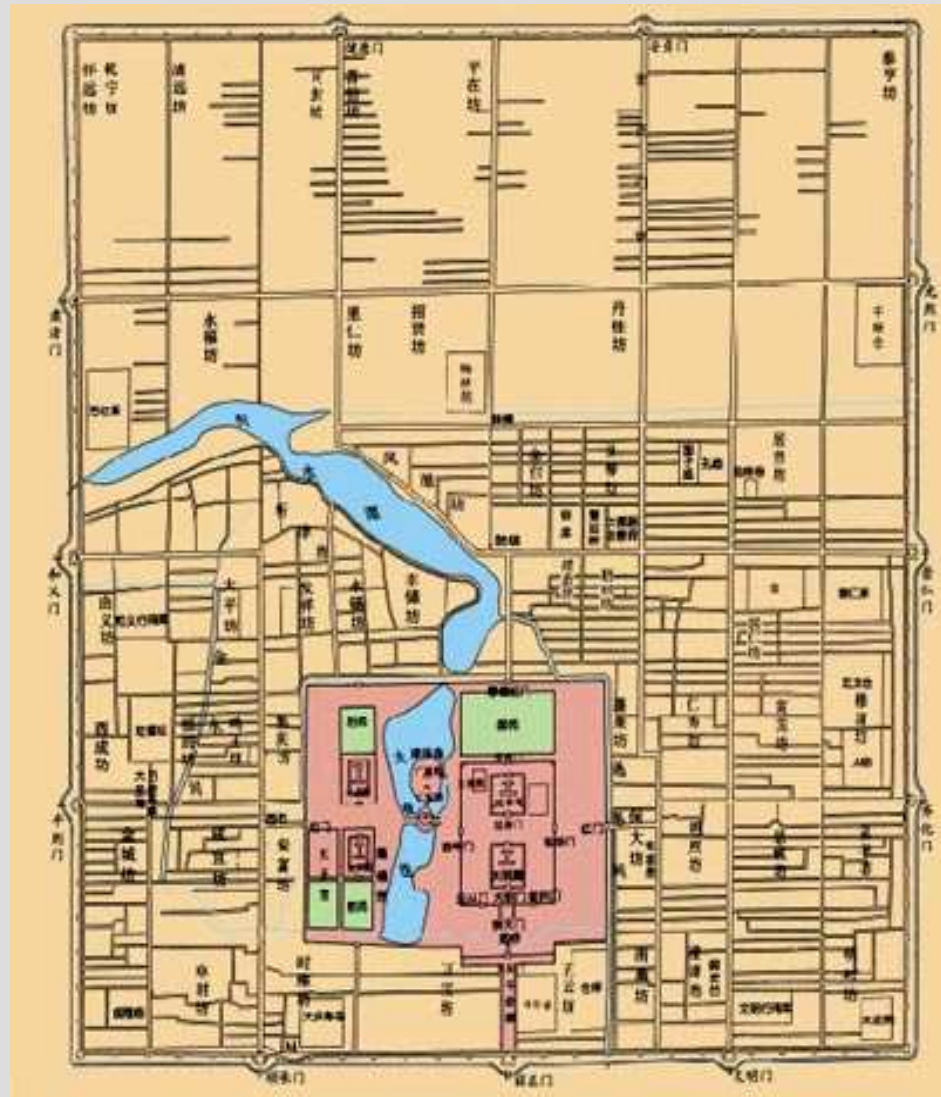
# BEIJING/PEKING 1930s







# 北京 Beijing walled city



# Forbidden City





# 北京天安門 Tiananmen





# 北京 Forbidden City/Tiananmen



# Beijing Exhibition Centre, 1954



# Tiananmen Square, 2007



# Monument to the People's Heroes, erected in 1958



# Great Hall of the People, 1959





# Great Hall, Deng Xiaoping- Thatcher, 1982



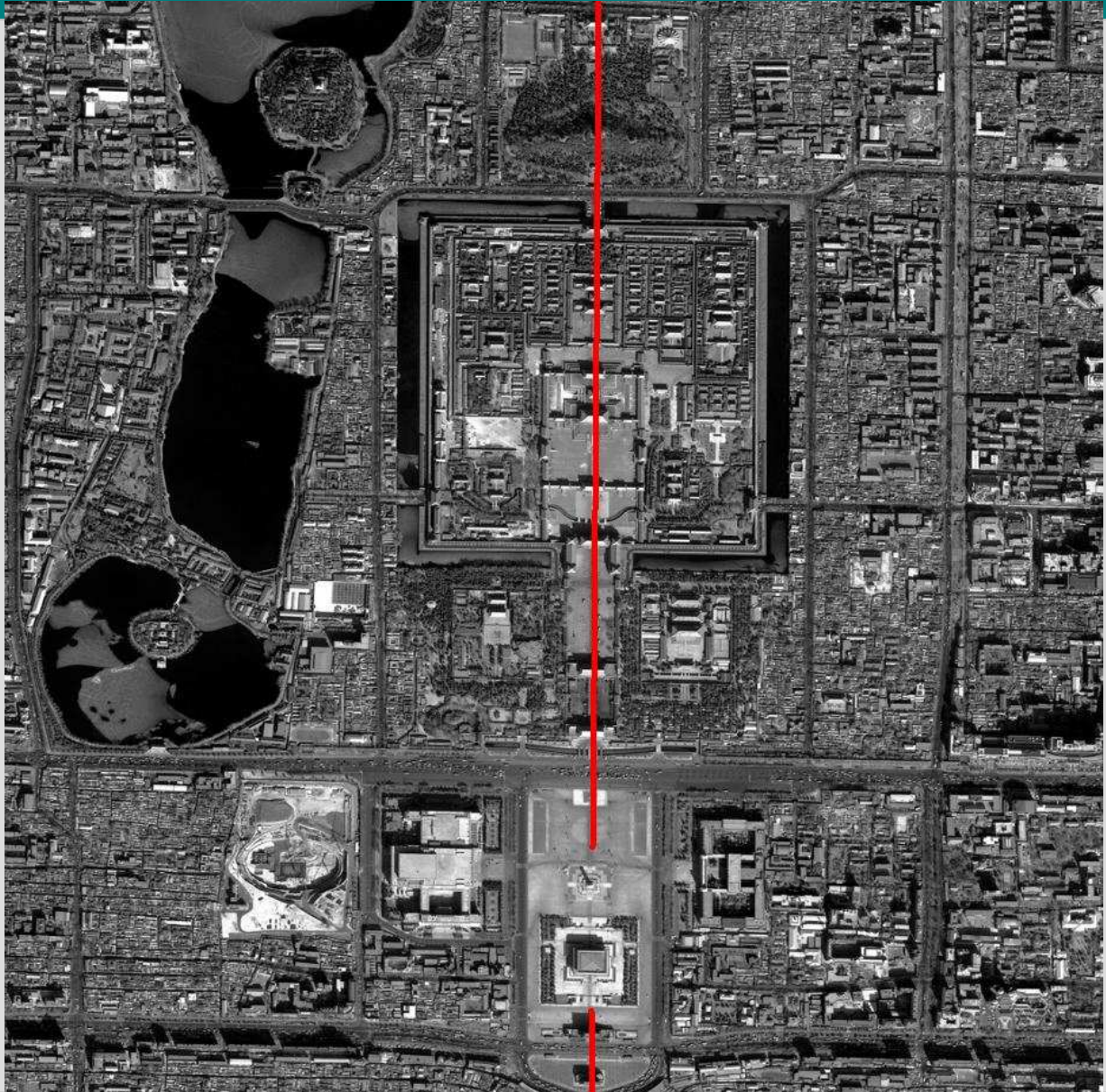
# History Museum/ Museum of the Revolution, 1959





# Mao Zedong Mausoleum, 1977





# Tiananmen Square, 2007



# 1950s "Big Roof Controversy"

- Liang Sicheng, an architect and historian of Chinese architecture who idealized and was responsible for re-inventing the architectural imaginary of 'old China', described the 1950s Soviet-inspired, 'sinified' architectural style, big roofs with large, overhanging eaves crowning a Soviet-style building, as:
- **"Western suits with Chinese skullcaps"**
- He favoured a Chinese National architecture

# Beijing Friendship Hotel built in 1954 to house Soviet 'experts'







# Hunan University Main Hall, 1955



# Big Roofs Condemned

- Even this limited sinification of modern buildings was condemned, in 1955, as **wasteful**; an economic argument
- Liang Sicheng became the main target of a political campaign against 'national style'



# Tsinghua/Qinghua University, Main Building, 1968



Lack of funds led to the tower in the original plans  
being reduced to a flat roof

# Moscow State University

<http://msu.moscow.ru>







# Beijing Opera House

- AKA the National Grand Theatre,
- AKA The Egg,
- Architect: Paul Andreu



# The Egg









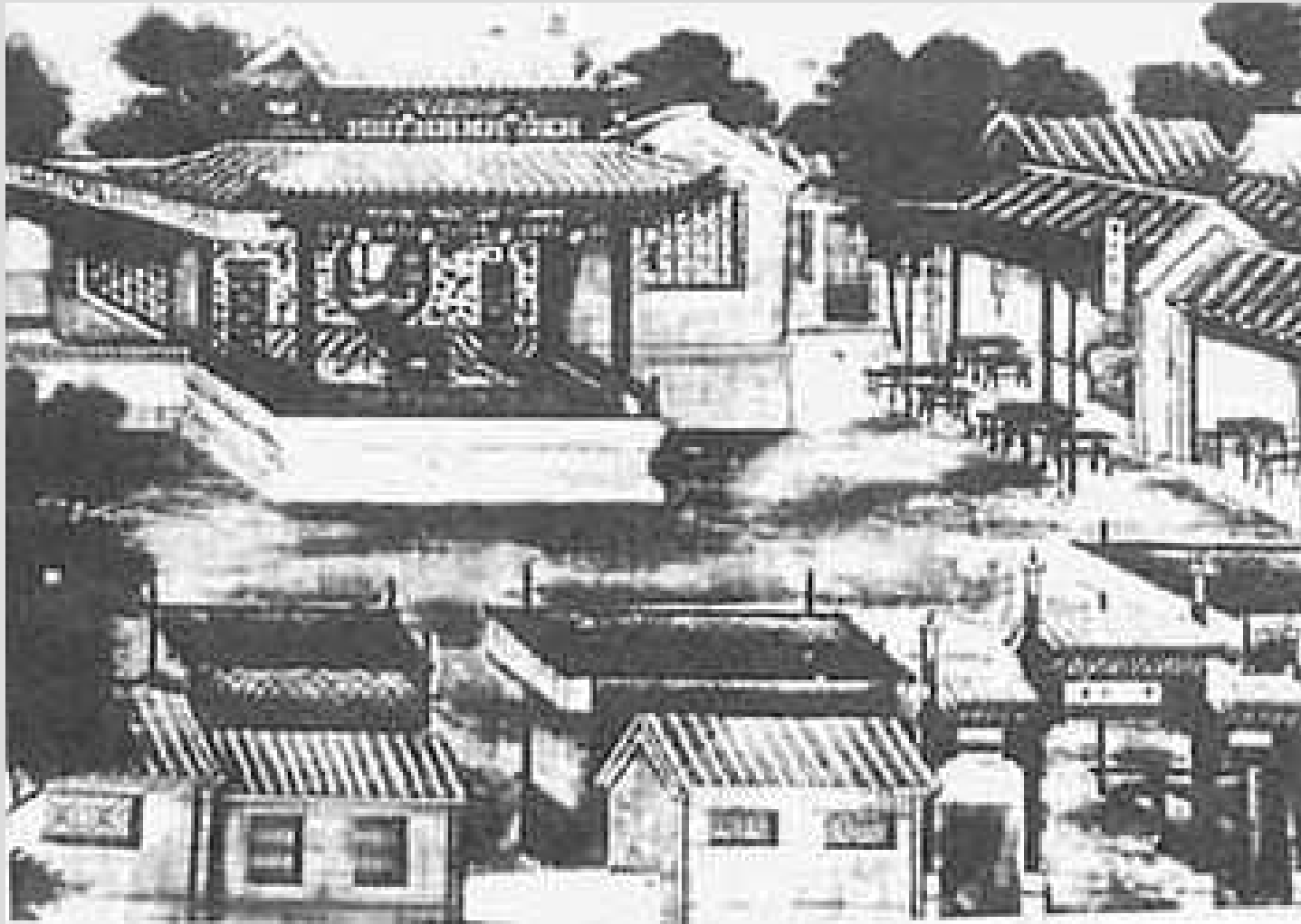
## Centenary Opera House Reopened in Beijing

- 27 JUNE 2001
- June 27 saw the ribbon-cutting ceremony for the reopening of a hundred-year-old opera house "Guangde Theatre" meaning 'wide virtue'
- Founded in 1796, Guangde Theatre is one of the oldest theatres surviving in Beijing...





# Guangde teahouse/theatre



# Beijing's oldest theater to be reduced to rubble

- 23 APRIL, 2007
- Beijing's oldest opera theater built during the Ming Dynasty -- is to be crushed under the onslaught of Beijing's remorseless bulldozers.
- City officials intend to replace the unsafe ancient structure with a new, state-of-the-art facility somewhere close by.
- "We intend to build a modern, professional venue like those on Broadway in the United States, where regular shows are offered all year round, and high-end performances can also take place..."

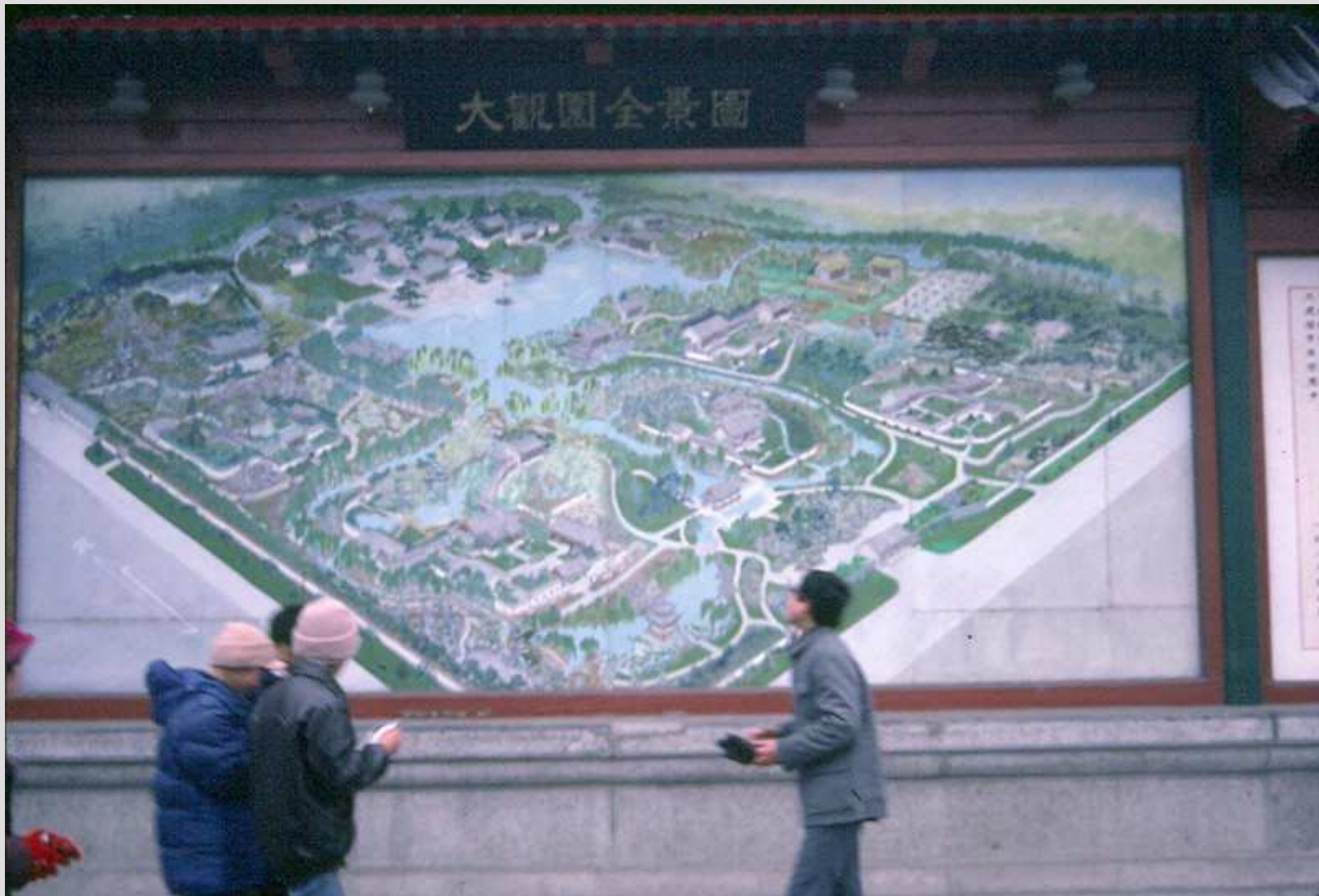


# Tianjin Ancient Culture Street (1986)





# Grand View Garden (Daguanyuan) -1986 Film set – Theme Park



# Beijing







# Xuanwu District, southwest Beijing



- a replica of Daguan Yuan - home of imperial family described in the Chinese novel:
- ***Dream of the Red Mansion***
- by Qing Dynasty writer Cao Xueqin (1715-1763).



- Beijing, Wangfujing, May 2004
- 北京王府井
- House condemned to be demolished





# To be demolished , May 2004















# Beijing, 'Culture Street'

next to Wangfujing, Beijing Hotel in background







# CANTON





仙踪游



McDonald's



屈臣氏

負一層

PARIS WEDDING PHOTO  
PARIS 巴黎婚紗

VOGUE

Lilota



IORD







招租  
AD HERE  
龙之悦  
鸿鑫安

McDonald's  
麦当劳

麦当劳  
I'm lovin' it  
麦当劳

健民医药

纯银首饰  
Silver 925

日本料理  
寿司

KFC

真功夫

真功夫

金达

ANCHOR

361

TATTOO



Carrefour



家乐福



入



ENTRANCE







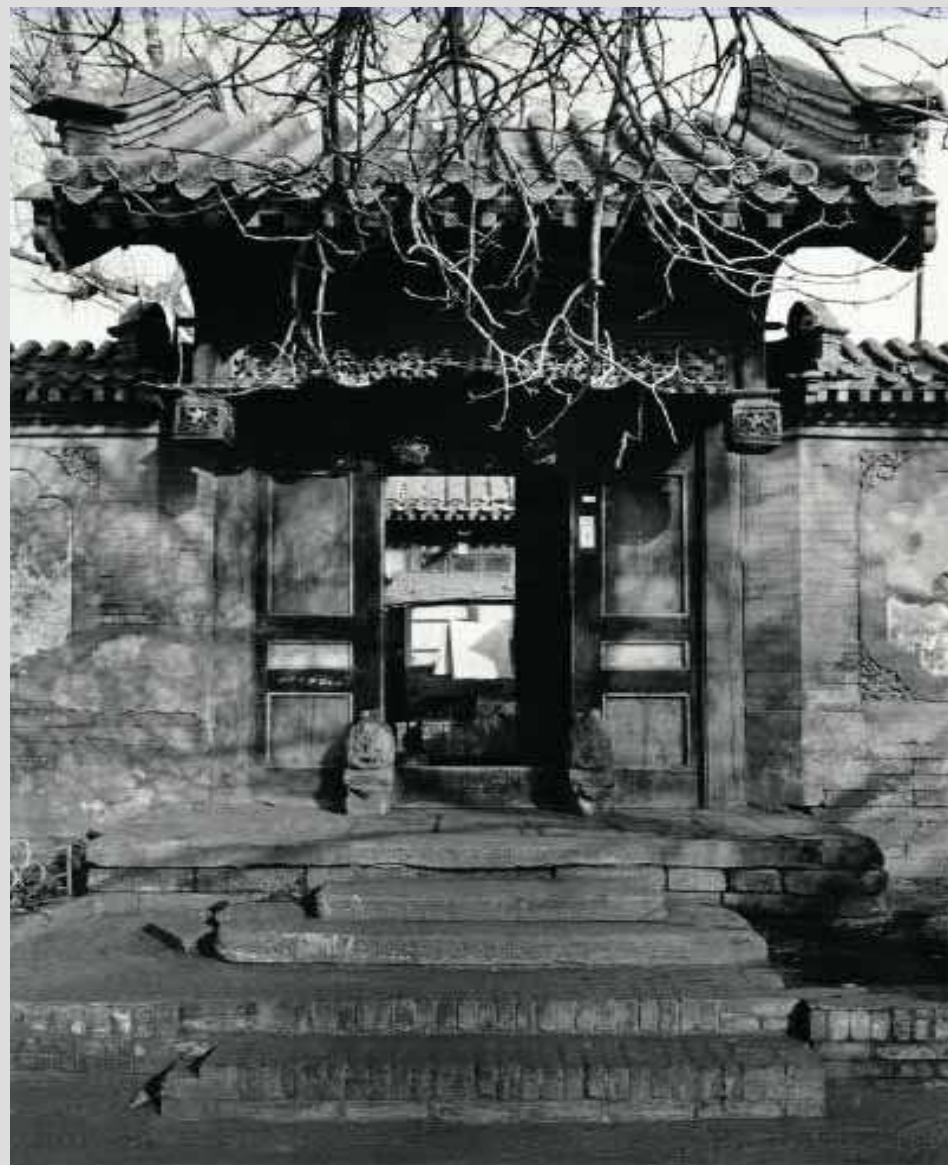
# 'REAL KUNG-FU'

Chinese fast food, Canton, March 2007  
THE EMPIRE STRIKES BACK?



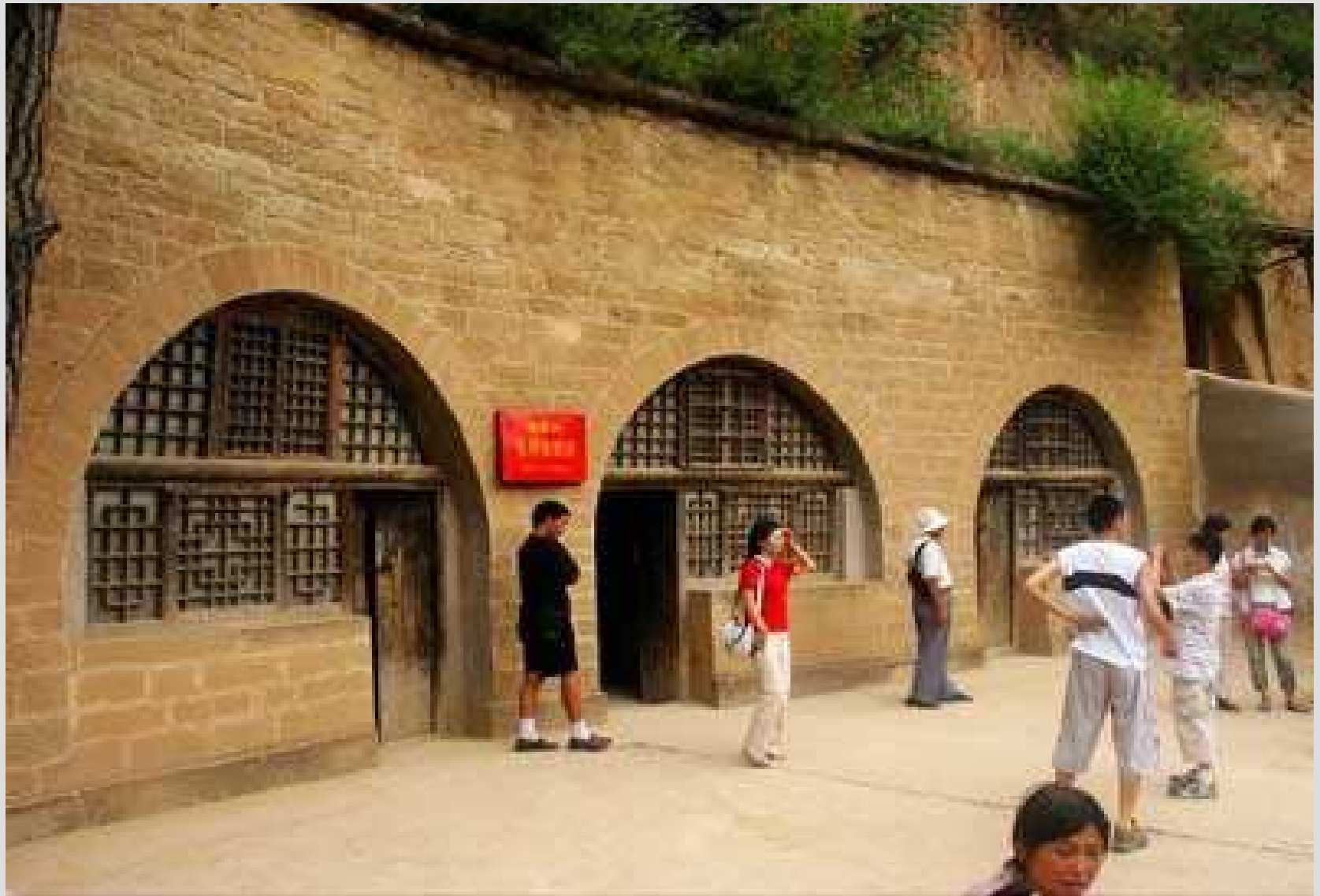


# 4 sided compound



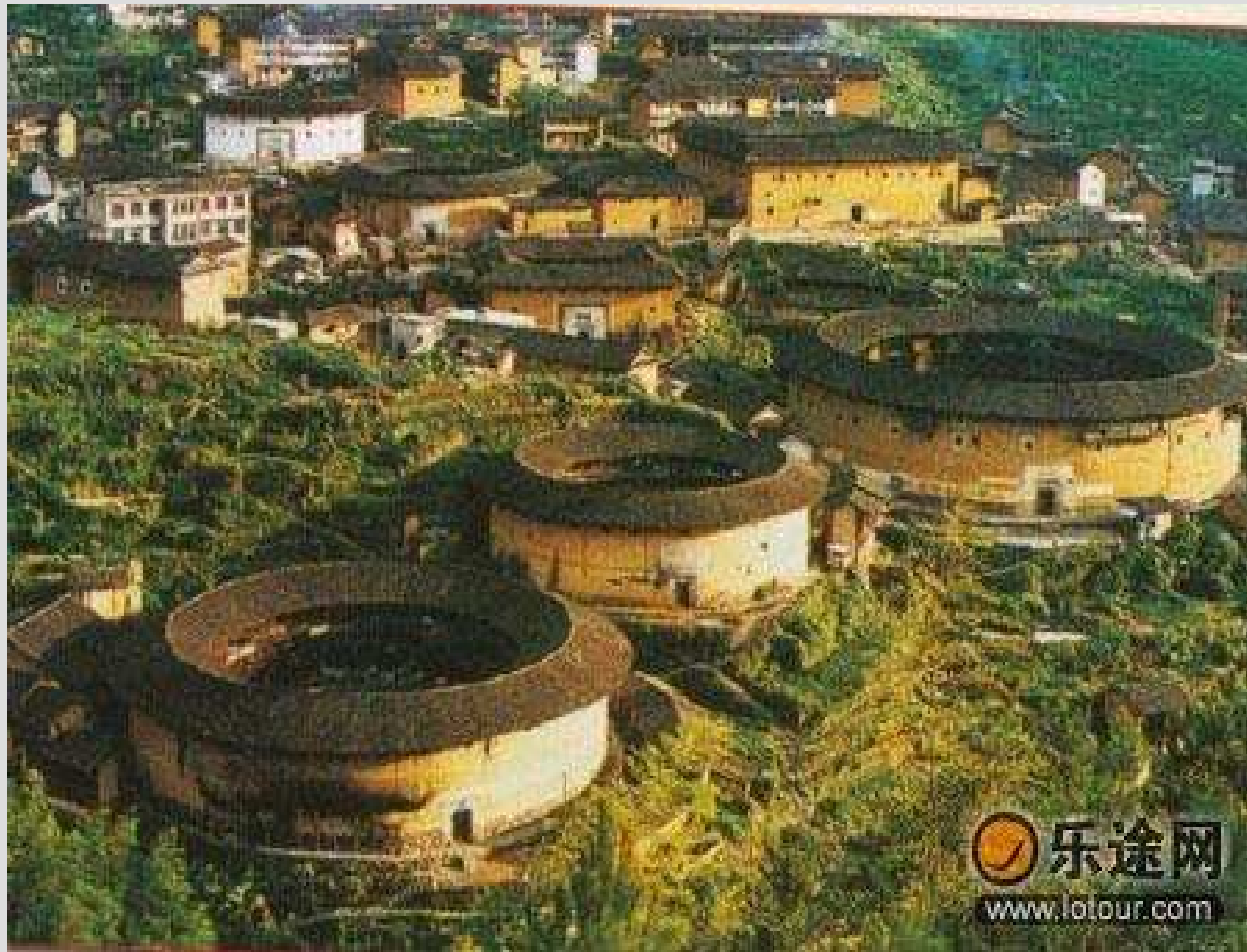


# Yan'an, Shaanxi caves





# 土楼 Tulou, Fujian







# 吊脚楼 Diaojiailou, Yunnan





同一个世界 同一个梦想  
*One World One Dream*

Beijing 2008

Beijing 2008

登机口  
GATES



