



HAL
open science

Accessibility and the “Everyday Mobility – Work – Household” Triad: An Exploration during the Covid-19 Crisis in Lima and Bogota

Jérémy Robert, Omar Pereyra, Hernando Sáenz Acosta, Vincent Gouëset

► To cite this version:

Jérémy Robert, Omar Pereyra, Hernando Sáenz Acosta, Vincent Gouëset. Accessibility and the “Everyday Mobility – Work – Household” Triad: An Exploration during the Covid-19 Crisis in Lima and Bogota. Citizens on the Move: Accessibility and Mobility in the Global South, International Network for Transport and Accessibility in Low Income Communities (INTALInC-LAC), Sep 2022, virtual, Colombia. hal-03987020

HAL Id: hal-03987020

<https://hal.science/hal-03987020>

Submitted on 13 Feb 2023

HAL is a multi-disciplinary open access archive for the deposit and dissemination of scientific research documents, whether they are published or not. The documents may come from teaching and research institutions in France or abroad, or from public or private research centers.

L'archive ouverte pluridisciplinaire **HAL**, est destinée au dépôt et à la diffusion de documents scientifiques de niveau recherche, publiés ou non, émanant des établissements d'enseignement et de recherche français ou étrangers, des laboratoires publics ou privés.



Citizens on the Move: Accessibility and Mobility in the Global South

**Measuring accessibility: equitable access to resources, places, and opportunities
in urban areas**

Panel 1 / 09.09.2022

Accessibility and the “Everyday Mobility – Work – Household” Triad: An Exploration during the Covid-19 Crisis in Lima and Bogota

Jérémy Robert (U. Rennes 2 - ESO / IFEA), Omar Pereyra (PUCP), Hernando Sáenz (U. Santo Tomas) and Vincent Gouëset (U. Rennes 2 – ESO)

Introduction

Accessibility and the “Everyday Mobility – Work – Household” Triad: An Exploration during the Covid-19 Crisis in Lima and Bogota

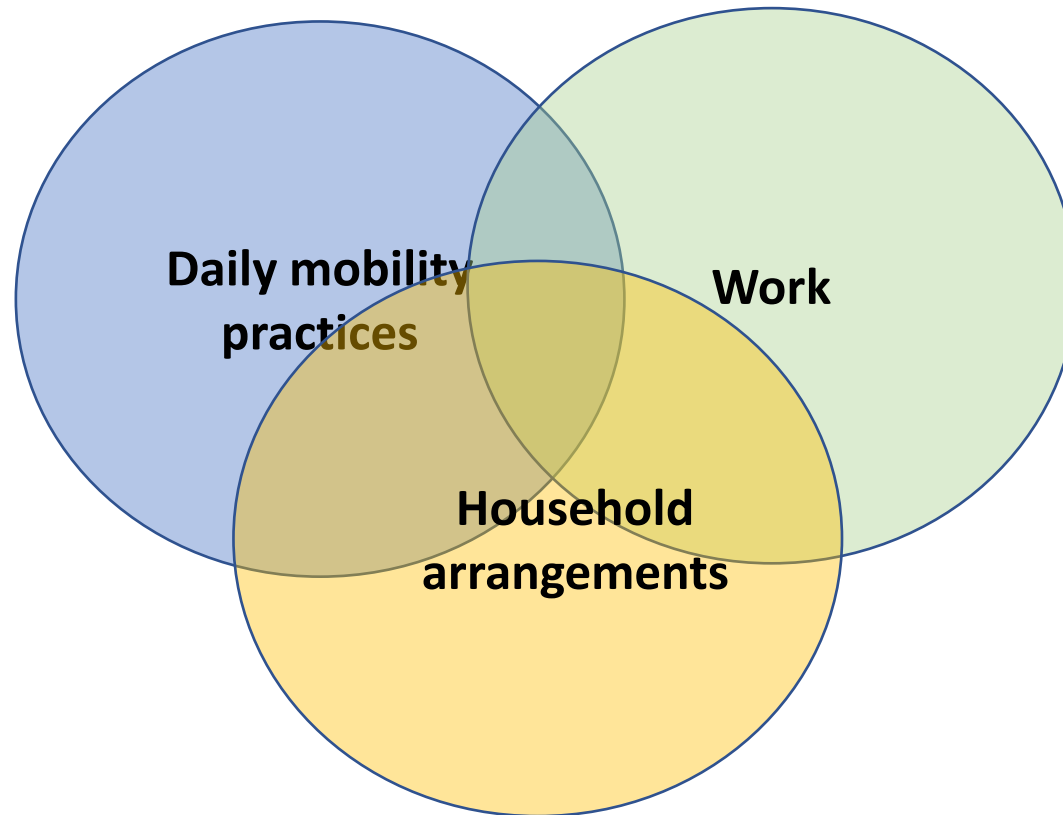
Modural Project (<https://modural.hypotheses.org/>)

Exploratory fieldwork during Covid in Lima and Bogota (September 2020 – September 2021)

How accessibility problems during the pandemic period show structural phenomena?

Research issues and conceptual framework (1)

Link between 3 components of the mobility system



Hypothesis

→ linkage between these 3 components define accessibility of individuals

Research issues and conceptual framework (2)

Accessibility defined as: “the capacity of people to access places that offer some services and opportunities which are needed –or desired- by people” (Hernández, 2012, p. 119).

Accessibility as an intermediary resource to understand the wellbeing of households. Defined as:

- Household’s capital (including household’s configurations)
- Resources that allow to take advantage of opportunities

Goal:

- Analyze the level of vulnerability in terms of accessibility based on the relationships among mobility, work and households’ arrangements (or as specific configurations of these 3 components),
- and how it evolves across time (change produced by covid crisis) ?

Methodology

Qualitative corpus during pandemic period

During 2020

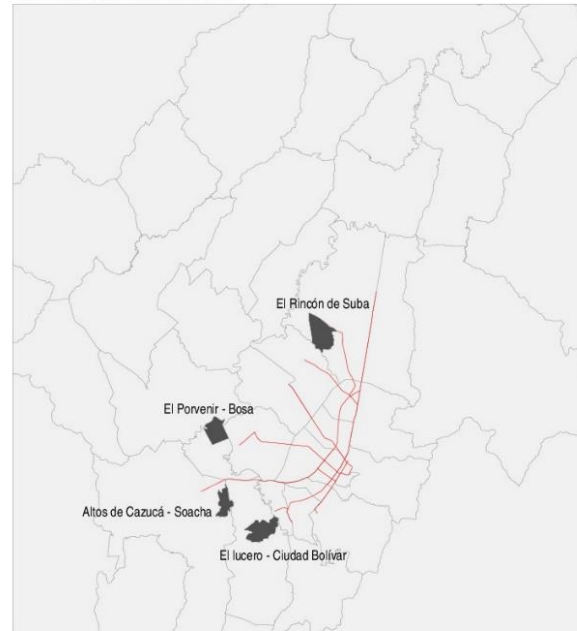
- 10 interviews in the poor peripheral area of Huaycán in Lima.
- 36 family-cronicles conducted in different areas of Bogotá.

During 2021

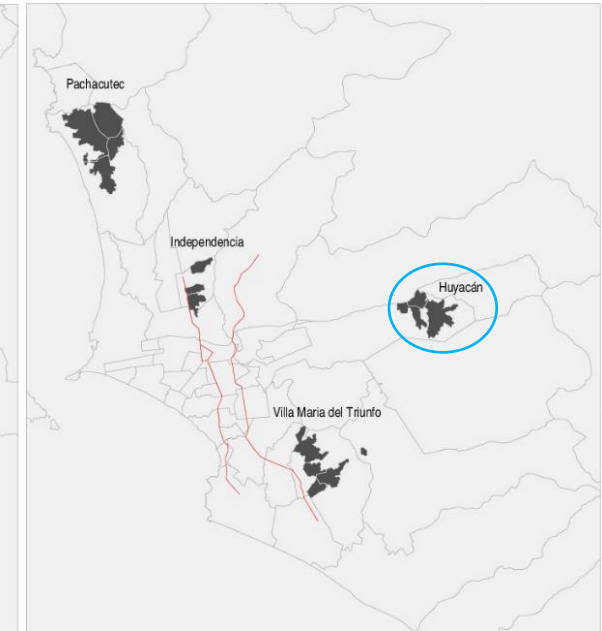
- 80 interviews conducted in poor peripheral areas of both cities.

Zonas donde se realizarán las encuestas tanto cuantitativas como cualitativas en el marco del proyecto Modural

Área Metropolitana de Bogotá



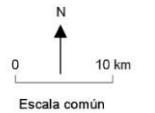
Área Metropolitana de Lima



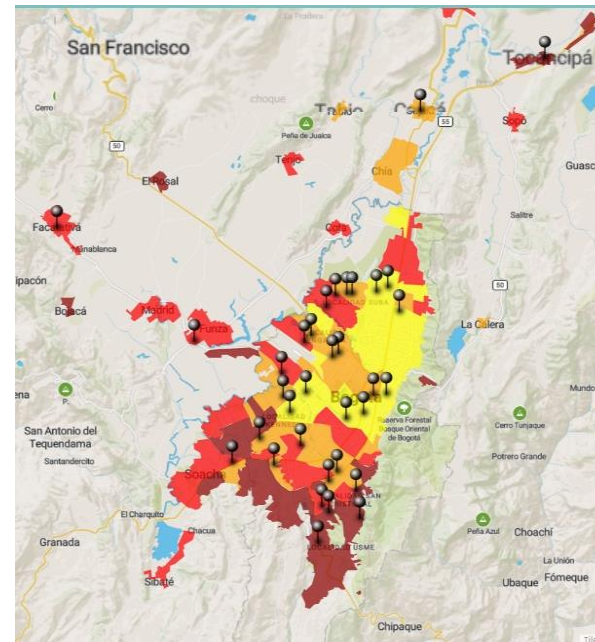
■ Zonas de encuestas

— BRT

Bogotá: localidades dentro del DC y municipios fuera
Lima: distritos



Realización: ANR Modural - UMR ESO 6590 CNRS - Université Rennes 2 - Instituto Francés de Estudios Andinos - Octubre 2020



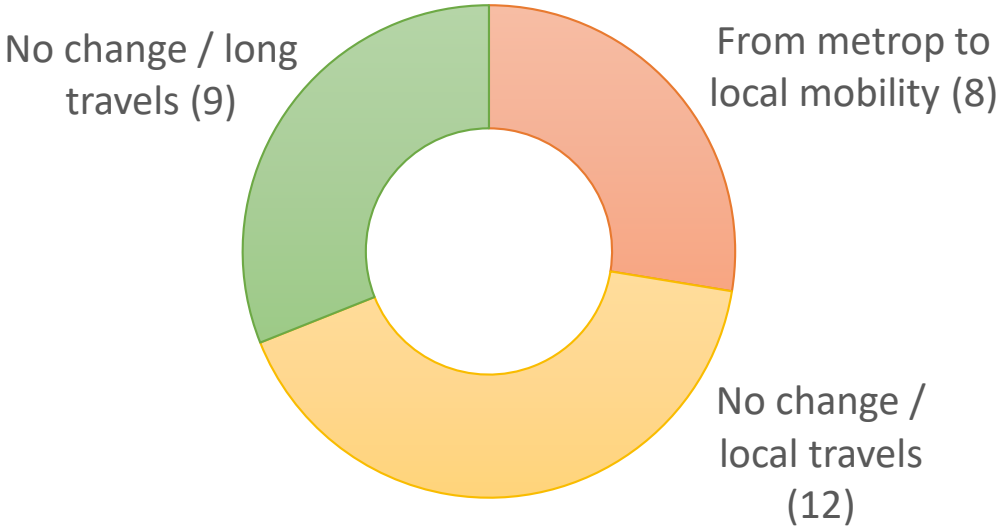
Impacts of the Covid-19 crisis

- Lockdown policies
 - Loss of employments ==> Increasing poverty
 - Home-office
 - Virtual education
- Increasing costs / prices / bus-fares
- Contraction of mobility (15 minute-cities? / isolation? / segregation?)

Dislocation of opportunities / Contraction of mobility / Mushrooming of new local enterprises (Lima)

Job changes and the contraction of mobility

3 tendencies:



In all cases:

Worsening of employment conditions

Worsening of mobility conditions

New services and local activities

(mobility-jobs and local deliveries as a new source of income)



Changes in intra-family arrangements (Bogota)

Increase of care-work

- Changes in household configuration (grouping / reunification of families)
- Increasing house-work
- Virtual-education
- Health-care activities

Changes in intra-family arrangements

- Women leave their jobs more often than men
- Women look for more flexible jobs
- Men go to work and buy groceries
- Women stay at home and take care of children and the elderly

In summary

